

42/87

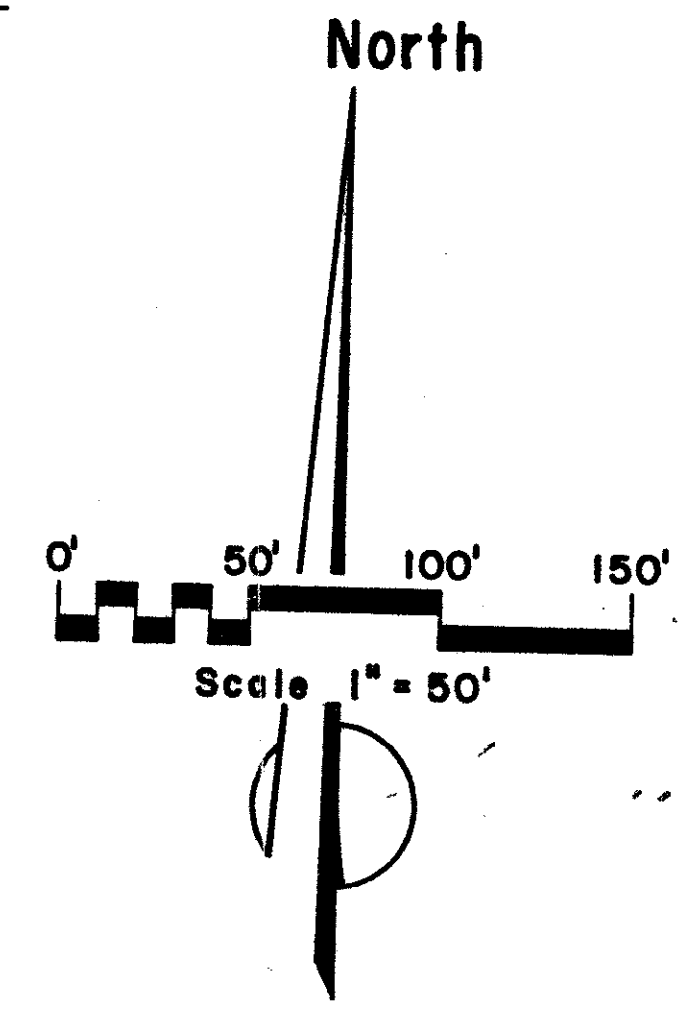
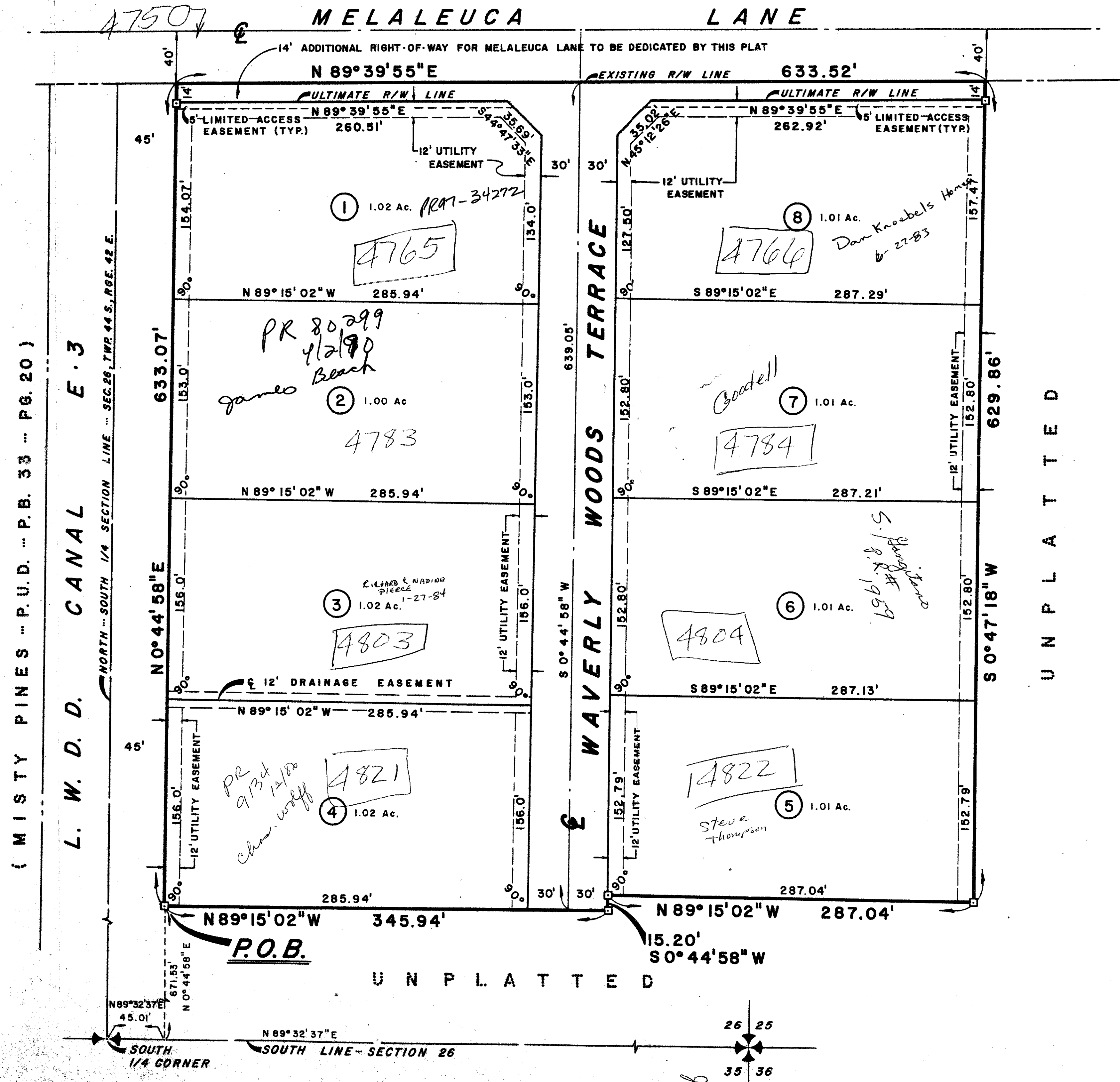
WAVERLY WOODS — PLAT NO. 1

A PLAT OF A PORTION OF SECTION 26, TOWNSHIP 44 SOUTH, RANGE 42 EAST, PALM BEACH COUNTY, FLORIDA

MICHAEL B. SCHORAH & ASSOCIATES, INC.
CONSULTING ENGINEERS & PLANNERS
SHEET TWO of TWO SHEETS

87

STATE OF FLORIDA
COUNTY OF PALM BEACH
This Plat was filed for record at
M. this day of 19
and duly recorded in Plat Book No.
on Page
By John B. Dunkle, Clerk Circuit Court
D.C.



(MISTY PINES "P.U.D." "P.B. 33" "P.G. 20")

L. W. D. D. CANAL E.3

WAVERLY WOODS TERRACE

UNPLATTED

1000-021

WAVERLY Woods
#1 42/87

MICHAEL B. SCHORAH & ASSOCIATES, INC.
ENGINEERS
PLANNERS
DEVELOPMENT CONSULTANTS
1838 FOREST HILLS BLVD.
SUITE 205
WEST PALM BEACH,
FLORIDA 33406
PHONE: (305) 866-0080

