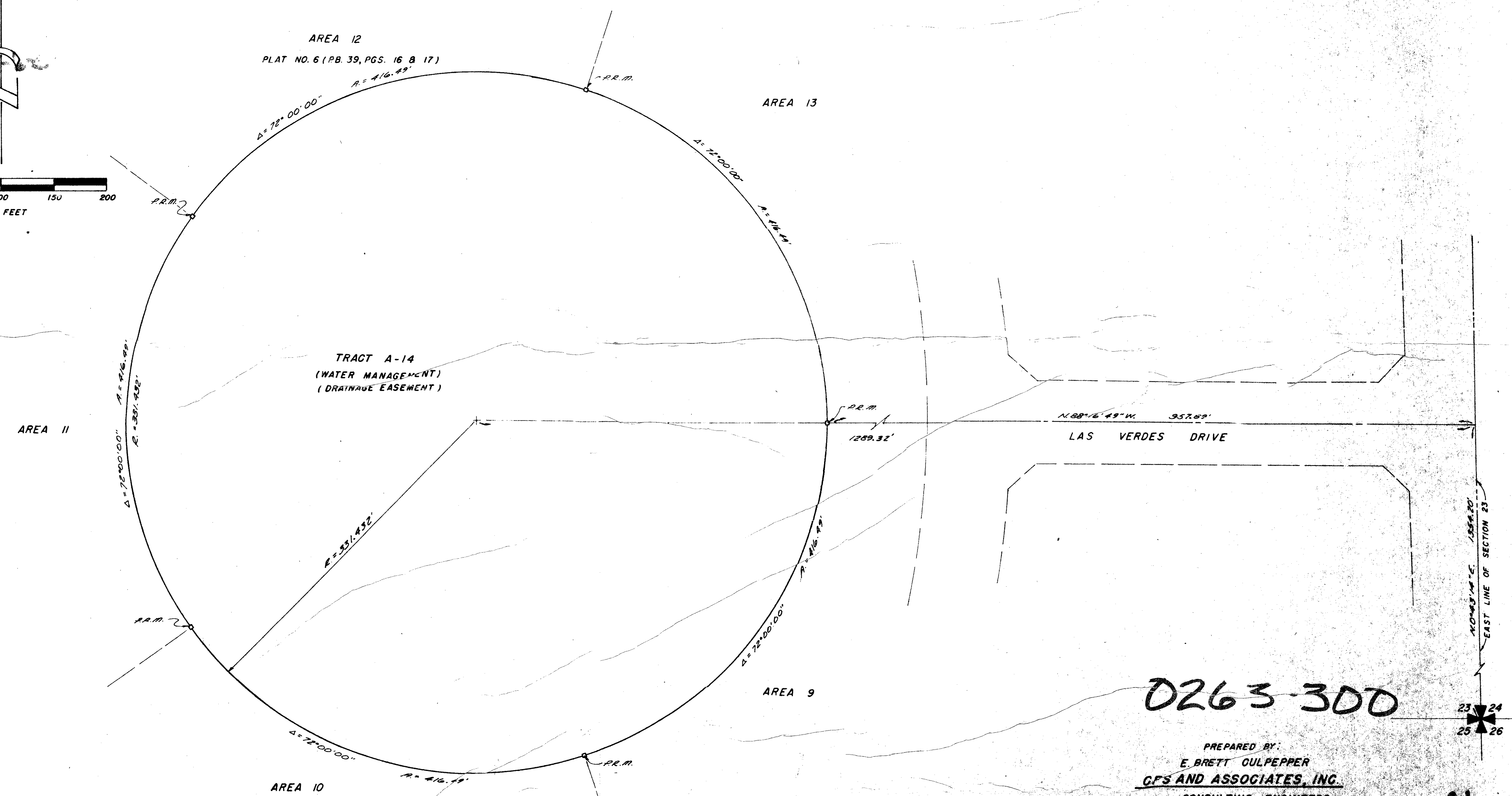
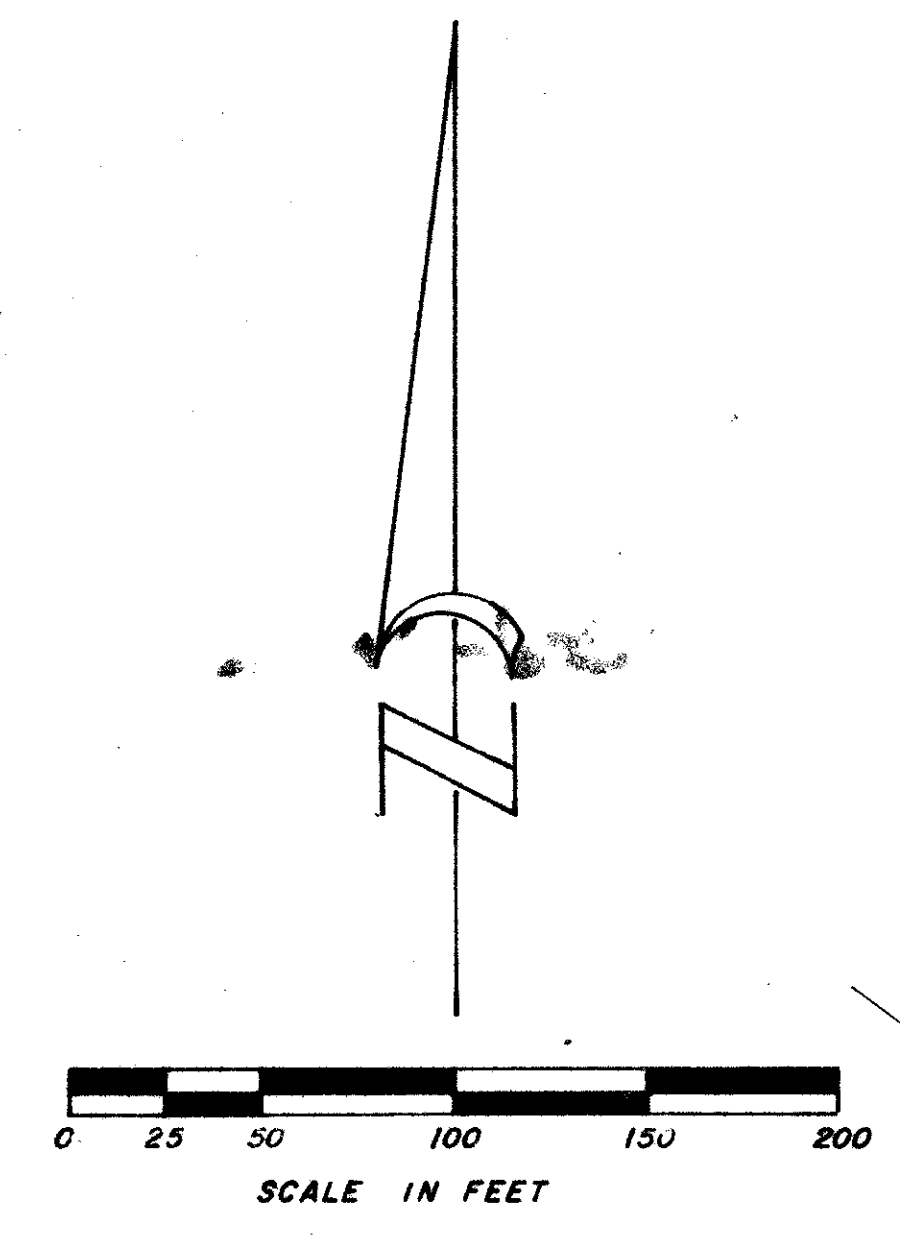


4/2/93

93

PART OF A PLANNED UNIT DEVELOPMENT KINGS POINT, BOUNDARY PLAT NO. FIFTEEN

A PART OF THE S.E. 1/4 OF SECTION 23
TOWNSHIP 46 SOUTH, RANGE 42 EAST
PALM BEACH COUNTY, FLORIDA



0263-300

PREPARED BY:
E. BRETT GULPEPPER
GFS AND ASSOCIATES, INC.
CONSULTING ENGINEERS
FT. WERCE, FLORIDA

Kings Point Boundary Plat
4/2/93
SHEET 2 OF 21

