

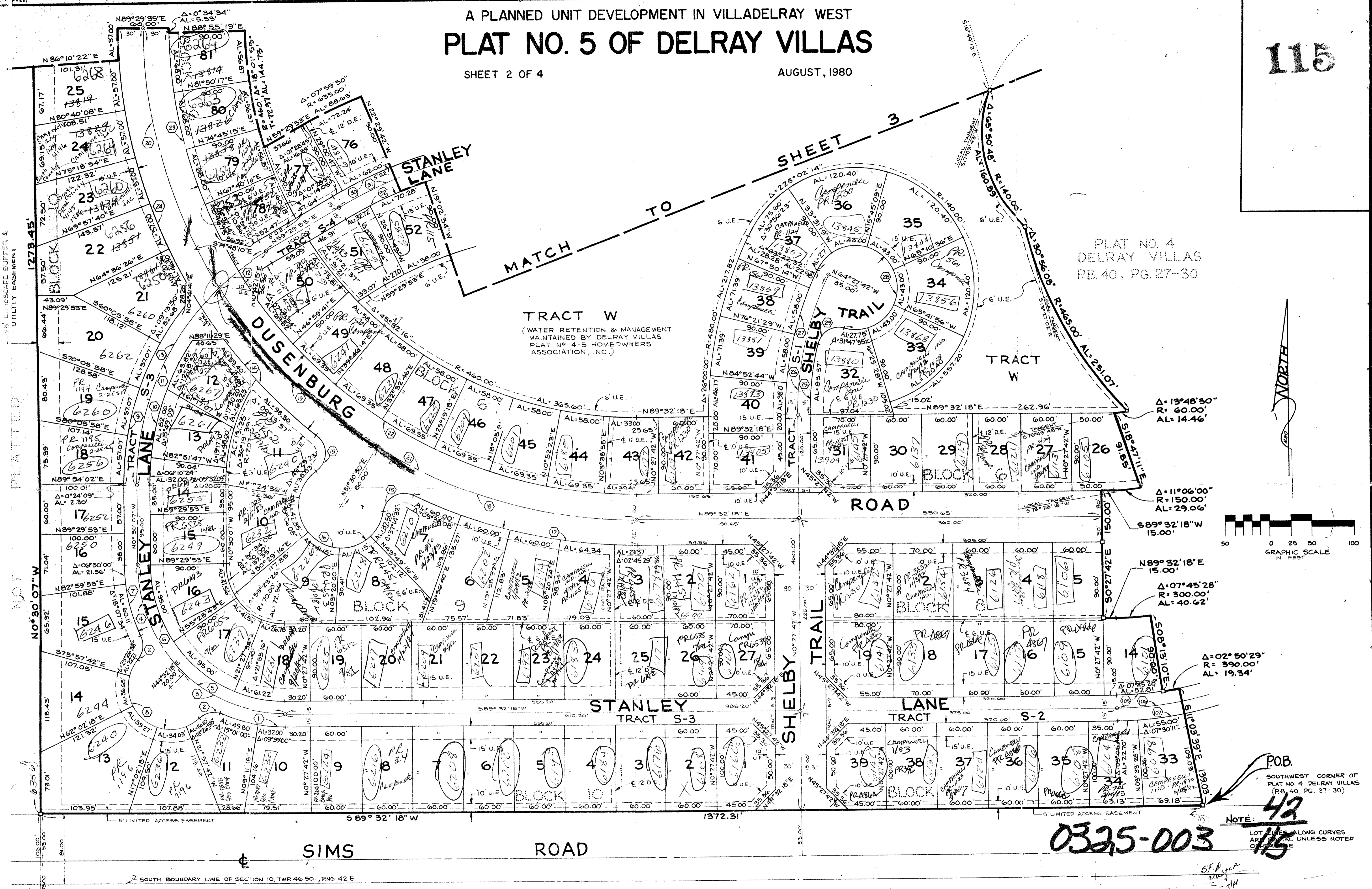
42/115

# A PLANNED UNIT DEVELOPMENT IN VILLAGES WEST PLAT NO. 5 OF DELRAY VILLAS

SHEET 2 OF 4

AUGUST, 1980

115



Field Book No. 8188 Pg. 24  
 Design J.C. YESTE  
 Drawn [Signature]  
 Checked [Signature]

ROBERT E. OWEI & ASSOCIATES, INC.  
 ENGINEERS - PLANNERS - SURVEYORS  
 WEST PALM BEACH  
 FLORIDA

PLAT NO. 5  
 DELRAY VILLAS

Job No. 78-1250  
 Scale 1" = 50'  
 Date AUG. 1980  
 Sheet of 4 2  
 File No. BF-2315

Approved