

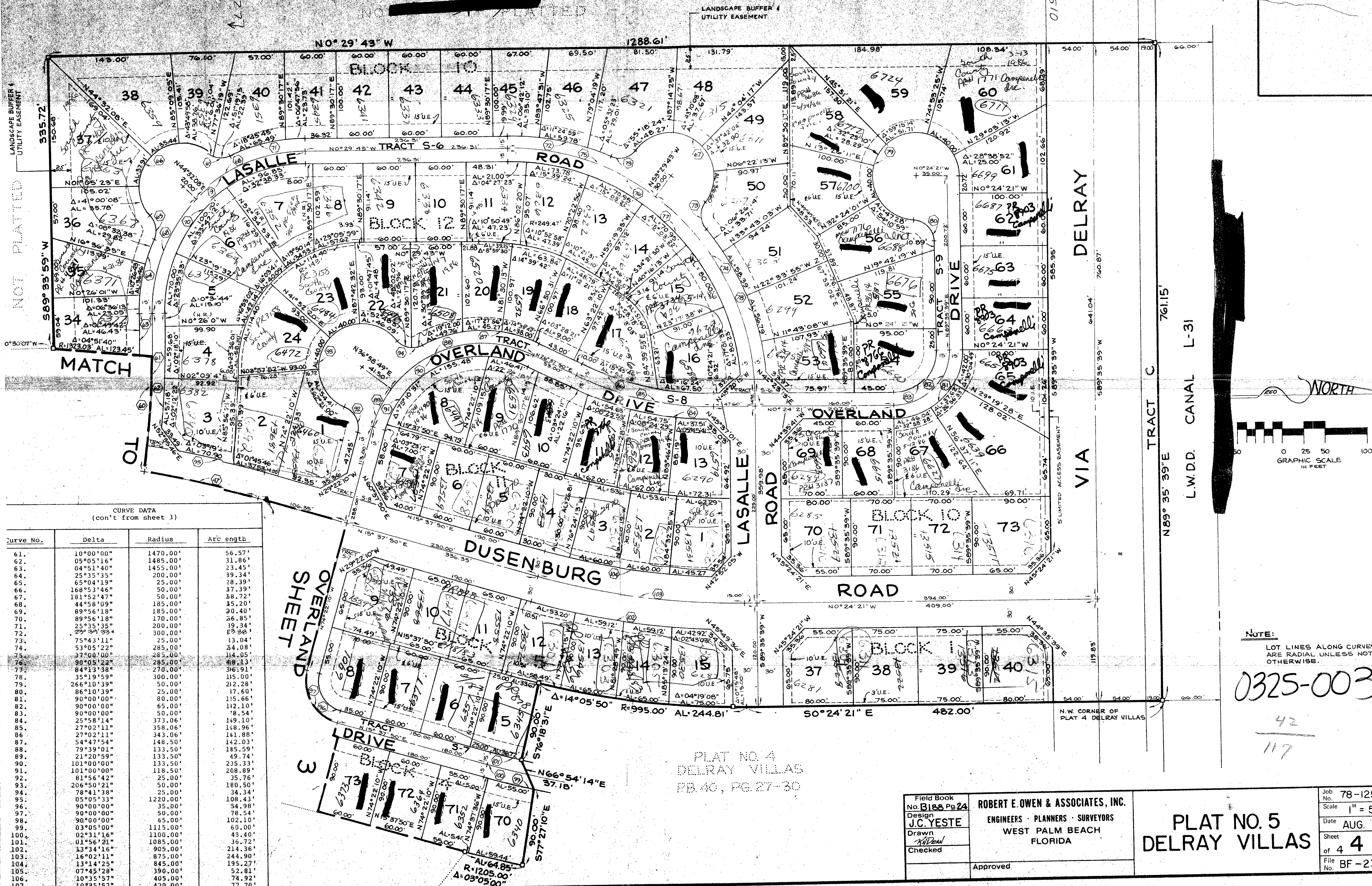
42/117

# A PLANNED UNIT DEVELOPMENT IN VILADELWAY WEST PLAT NO. 5 OF DELRAY VILLAS

SHEET 4 OF 4

AUGUST, 1980

117



CURVE DATA  
(con't from sheet 3)

Curve No.	Delta	Radius	Arc length
61.	10°00'00"	1470.00'	56.57'
62.	05°05'16"	1485.00'	31.86'
63.	04°51'40"	1455.00'	23.45'
64.	25°35'35"	200.00'	39.34'
65.	65°04'19"	25.00'	28.39'
66.	168°53'46"	50.00'	17.39'
67.	181°52'47"	50.00'	58.72'
68.	44°58'09"	185.00'	15.20'
69.	89°56'18"	185.00'	20.40'
70.	89°56'18"	170.00'	26.85'
71.	25°35'35"	200.00'	39.34'
72.	75°43'11"	300.00'	138.82'
73.	75°43'11"	25.00'	13.04'
74.	53°05'22"	285.00'	24.08'
75.	37°00'00"	285.00'	114.05'
76.	90°05'22"	285.00'	48.13'
77.	84°13'58"	270.00'	36.91'
78.	35°19'59"	300.00'	115.00'
79.	266°10'39"	50.00'	21.28'
80.	86°10'39"	25.00'	17.60'
81.	90°00'00"	80.00'	15.66'
82.	90°00'00"	65.00'	112.10'
83.	90°00'00"	50.00'	18.54'
84.	25°58'14"	373.06'	119.10'
85.	27°02'11"	358.06'	118.96'
86.	37°00'00"	343.06'	161.88'
87.	54°47'54"	148.50'	142.03'
88.	79°39'01"	133.50'	185.59'
89.	21°20'59"	133.50'	49.74'
90.	101°00'00"	133.50'	235.33'
91.	101°00'00"	118.50'	208.89'
92.	81°56'42"	25.00'	35.76'
93.	206°50'21"	50.00'	180.50'
94.	78°41'38"	25.00'	34.34'
95.	05°05'33"	1220.00'	108.43'
96.	90°00'00"	35.00'	54.98'
97.	90°00'00"	50.00'	78.54'
98.	90°00'00"	65.00'	102.10'
99.	03°05'00"	1115.00'	60.00'
100.	02°31'16"	1100.00'	49.40'
101.	01°56'21"	1085.00'	36.72'
102.	13°34'16"	905.00'	214.36'
103.	16°02'11"	875.00'	244.90'
104.	13°14'25"	845.00'	195.27'
105.	07°45'28"	390.00'	52.81'
106.	10°35'57"	405.00'	74.92'
107.	10°35'57"	420.00'	77.70'

PLAT NO. 4  
DELRAY VILLAS  
PB. 40, PG. 27-30

NOTE:  
LOT LINES ALONG CURVES  
ARE RADIAL UNLESS NOTED  
OTHERWISE.

0325-003

42  
117

Field Book  
No. B166 Pg. 24  
Design  
J.C. YESTE  
Drawn  
N. YESTE  
Checked

ROBERT E. OWEN & ASSOCIATES, INC.  
ENGINEERS · PLANNERS · SURVEYORS  
WEST PALM BEACH  
FLORIDA

## PLAT NO. 5 DELRAY VILLAS

Job No. 78-1250  
Scale 1" = 50'  
Date AUG. 1980  
Sheet 4 of 4  
File No. BF-2315