

42/131

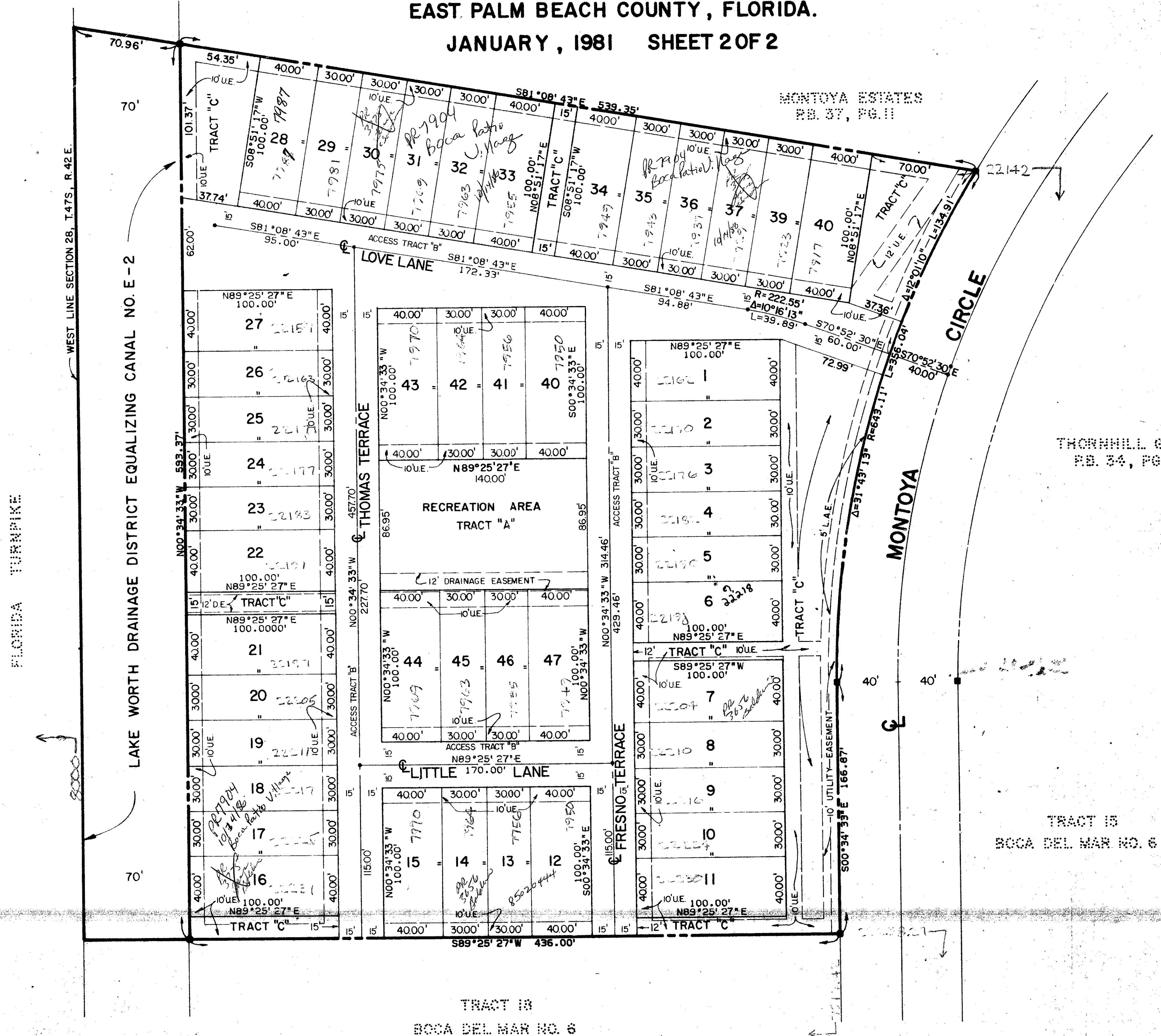
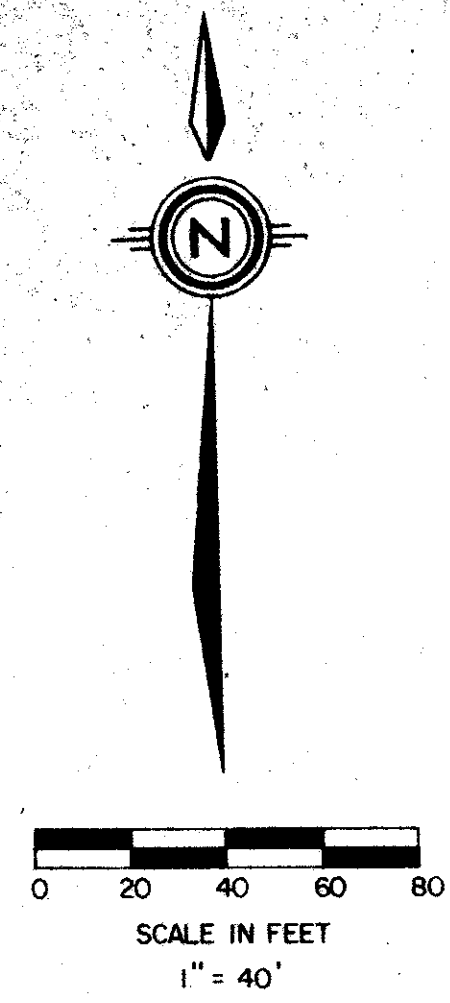
BOCA PATIO VILLAGE (PART OF A P.U.D.)

A PARCEL OF LAND BEING A RE-PLAT OF TRACT 14, "BOCA DEL MAR NO. 6" ACCORDING TO THE PLAT THEREOF, AS RECORDED IN PLAT BOOK 30 PAGES 142 AND 143 OF THE PUBLIC RECORDS OF PALM BEACH COUNTY, FLORIDA, AND SAID PARCEL LYING IN SECTION 28, TOWNSHIP 47 SOUTH, RANGE 42 EAST PALM BEACH COUNTY, FLORIDA.

JANUARY, 1981 SHEET 2 OF 2

131

STATE OF FLORIDA
COUNTY OF PALM BEACH
THIS PLAT WAS FILED FOR
RECORD AT
THIS DAY OF
AD, 1981 AND DULY RECORDED
IN PLAT BOOK ON PAGES
AND
JOHN B. DUNKLE, CLERK
CIRCUIT COURT
BY: DC



THORNHILL GREEN
PB. 34, PG. 95

TRACT 15
BOCA DEL MAR NO. 6

0205-304

LAND USE DATA	
AREA	6.8 AC.
UNITS	47 D.U.
DENSITY	6.9 D.U./AC.
BLDG. AREA	1.6 AC. (23.8%)
PARKING & ACCESS	1.0 AC. (15.1%)
RECREATION	0.3 AC. (4.6%)
OPEN SPACE	4.1 AC. (60.3%)

42
131

Meridian Surveying and mapping inc. WEST PALM BEACH, FLORIDA

DRAWN	M.E.H.	DATE	JAN. 1981
CHECKED		SCALE	1" = 40'
DRAWING NO.	80-P-047		

BOCA PATIO VILLAGE