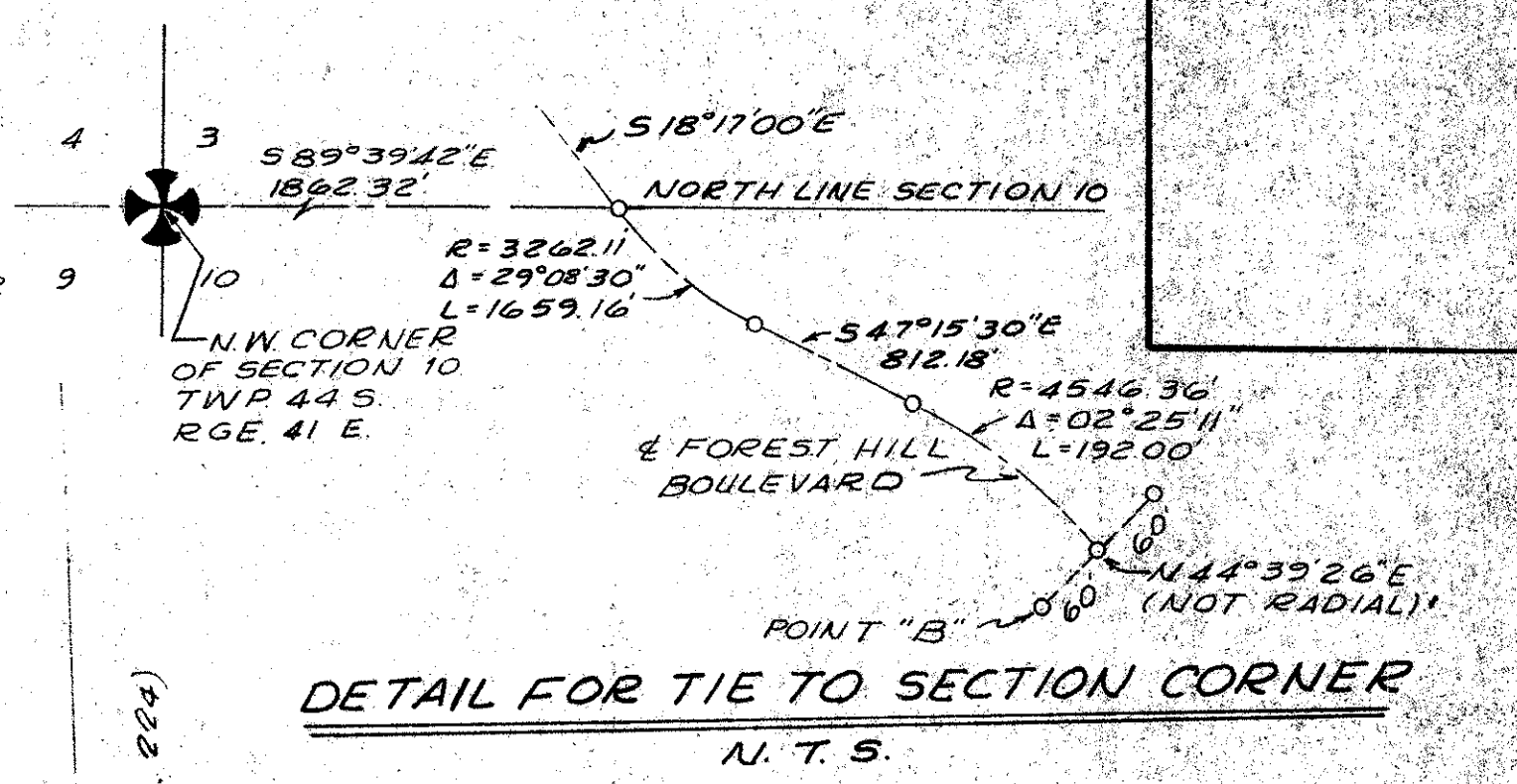
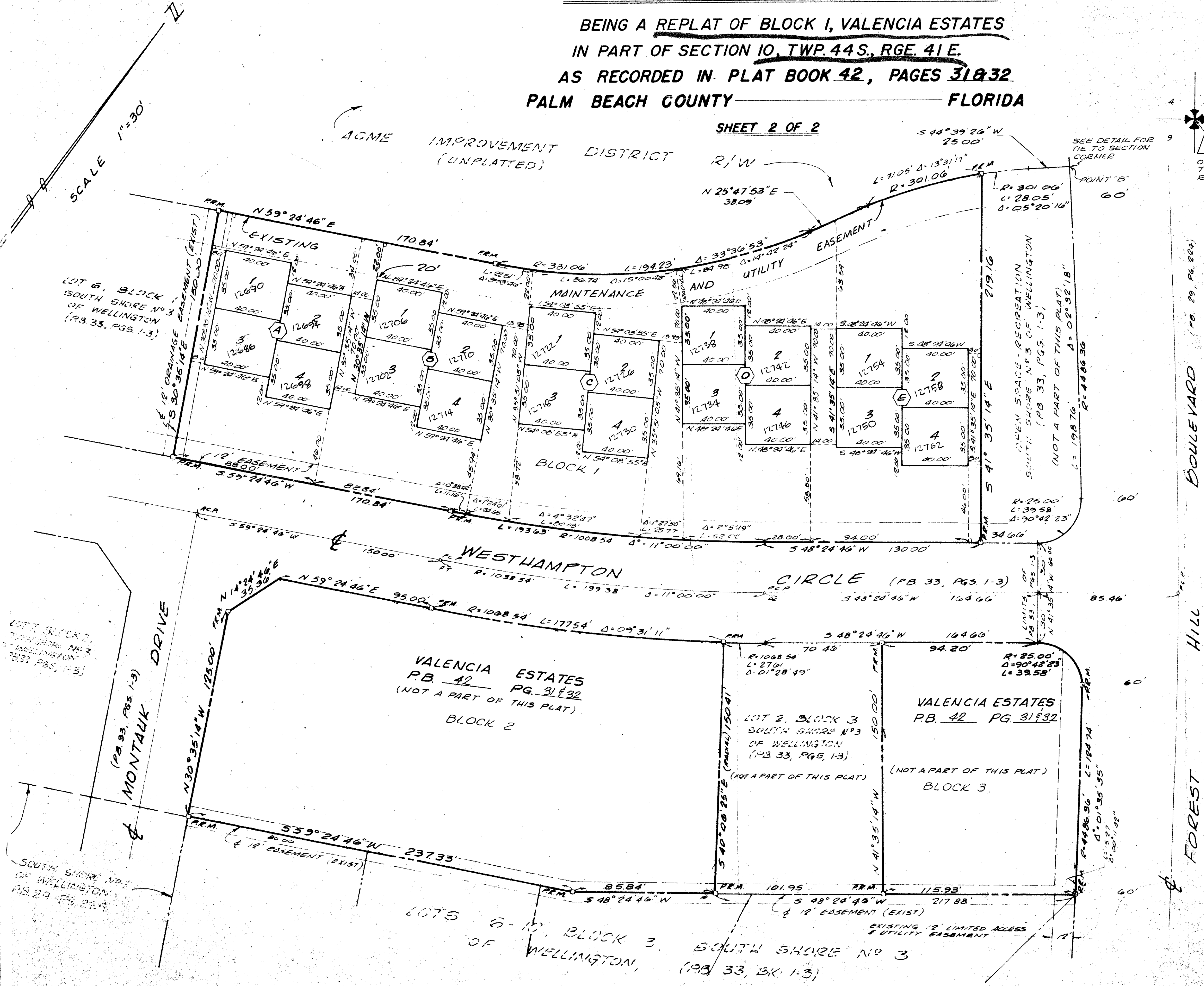


42/140

140

REPLAT OF
VALENCIA ESTATES
 BEING A REPLAT OF BLOCK I, VALENCIA ESTATES
 IN PART OF SECTION 10, TWP. 44 S., RGE. 41 E.
 AS RECORDED IN PLAT BOOK 42, PAGES 31 & 32
 PALM BEACH COUNTY FLORIDA

SHEET 2 OF 2



0332-341

~~0000-~~

Valencia Estates

SCALE 1"=30'
FELLOWS, READ & ASSOCIATES
 CONSULTING ENGINEERS & LAND SURVEYORS
 5601 CORPORATE WAY SUITE 204
 WEST PALM BEACH FLORIDA 33407
 TELE 1-305-686-4105
 FLORIDA DIVISION
 MAY 1981

42/140