

42/143

143

PART OF A P.U.D.

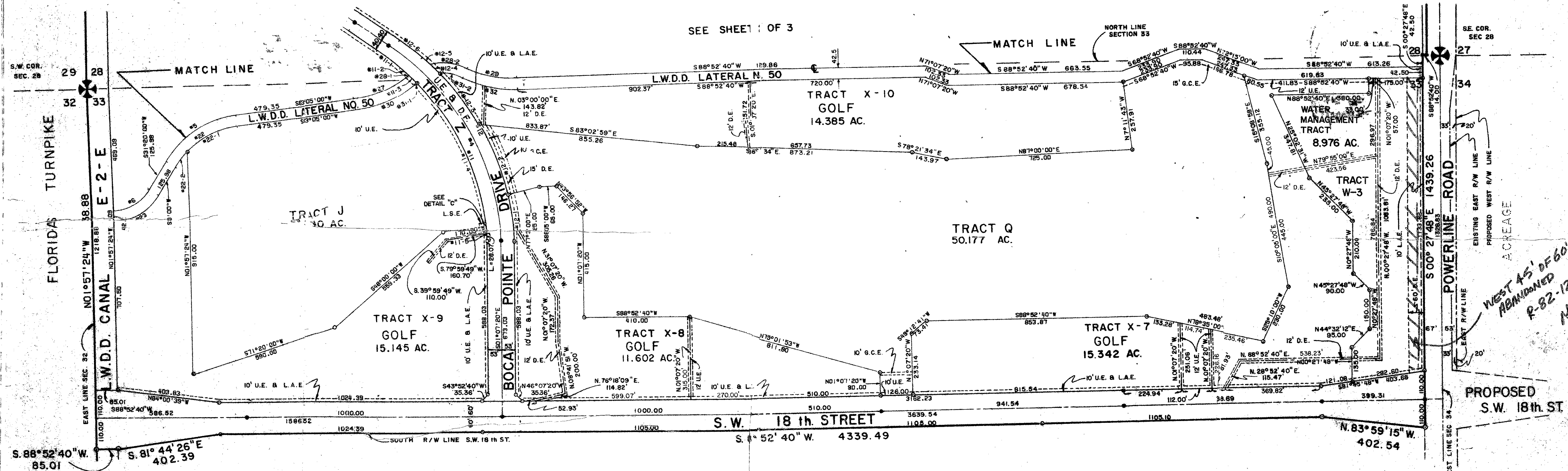
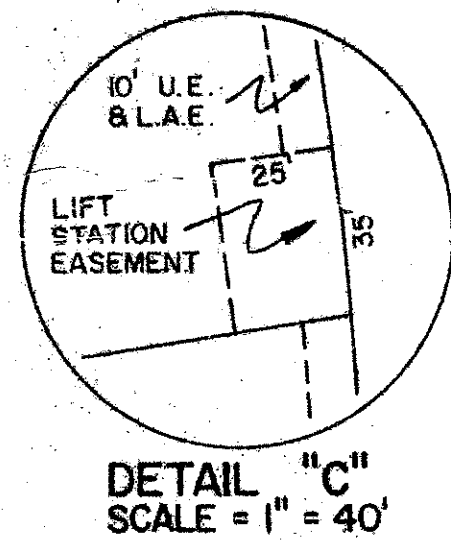
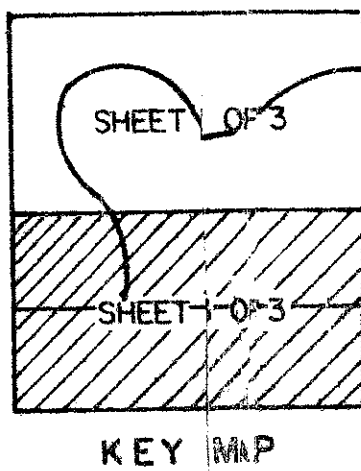
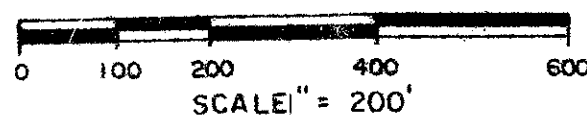
BOCA POINTE No. 1

A PLAT OF A PORTION OF SECTIONS 28 AND 33, TOWNSHIP 47 SOUTH, RANGE 42 EAST

A PORTION OF WHICH IS A REPLAT OF BOCA DEL MAR No. 9, AS RECORDED IN PLAT BOOK 30, PAGES 218 AND 219 OF THE PUBLIC RECORDS OF PALM BEACH COUNTY, FLORIDA

JOHN A. GRANT, JR., INC CONSULTING ENGINEERS AND LAND SURVEYORS BOCA RATON, FLORIDA

OCTOBER 1980
SHEET 3 OF 3



CURVE TABLE

NUMBER	RADIUS	ARC	DELTA	TAN	CHORD	CHORD BEING
1	976.86	944.26	05°12'40"	900.00	890.17	S89°13'40.0"E
2	370.00	334.19	05°14'00"	179.46	322.94	S74°12'30.0"E
3	170.00	168.28	05°42'36"	81.78	161.48	S89°11'18.0"E
4	555.16	503.74	06°12'40"	488.30	470.40	S89°13'40.0"E
5	102.08	67.07	2°07'28"	51.09	102.04	S6°16'17.5"E
6	42.67	27.34	1°14'00"	21.44	42.67	S7°05'36.0"E
7	42.77	27.33	1°14'00"	21.39	42.76	S6°21'18.5"E
8	657.72	599.27	05°12'40"	542.50	534.20	S89°13'40.0"E
9	58.30	36.07	1°03'29"	28.16	58.29	S2°52'14.5"E
10	999.54	944.78	05°12'40"	911.10	903.59	N89°13'40.0"W
11	200.02	171.28	05°12'40"	100.25	199.55	N89°13'40.0"W
12	305.82	273.32	05°12'40"	154.12	304.63	N7°22'24.0"W
13	247.66	147.12	1°12'36"	124.47	247.02	N7°15'08.0"W
14	32.98	19.02	0°12'18"	18.48	32.95	N89°52'37.0"E
15	48.85	25.51	0°31'36"	24.33	48.85	N89°52'37.0"E
16	88.48	44.04	0°42'36"	44.27	88.45	N89°52'37.0"E
17	28.00	14.00	0°00'00"	28.00	28.00	N6°01'00.0"E
18	28.00	14.00	0°00'00"	28.00	28.00	S2°52'40.0"E
19	367.00	336.00	05°12'40"	336.00	336.00	S74°12'30.0"E
20	520.43	480.33	05°12'40"	480.33	480.33	S89°13'40.0"E
21	78.97	41.31	01°31'08"	37.85	78.97	S79°55'34.0"E
22	218.50	170.39	05°42'36"	114.68	201.65	S9°41'18.0"E
23	392.50	332.75	05°42'36"	118.91	229.36	N6°08'42.0"E
24	807.50	747.50	05°42'36"	2.17	4.33	N89°42'25.0"E
25	207.50	163.56	02°24'06"	80.49	150.08	S12°41'00.0"E
26	392.50	332.50	05°42'36"	103.85	200.73	S6°18'08.0"E
27	453.00	217.96	03°58'36"	132.90	254.19	N6°05'42.0"E
28	163.00	7.68	2°39'57"	3.84	7.68	N0°26'22.0"E
29	163.00	7.68	2°39'57"	3.84	7.68	S7°47'23.0"E
30	433.00	225.03	02°39'24"	113.59	222.53	S6°18'08.0"E

TABULATION OF AREAS

TRACT	AREA	NO. UNITS	USE
J	20.340 AC.	244	APARTMENT
K	12.333 AC.	99	TOWNHOUSE
L	30.467 AC.	183	TOWNHOUSE
M	13.304 AC.	80	TOWNHOUSE
N	39.500 AC.	178	PATIO
O	9.919 AC.	60	TOWNHOUSE
P	55.821 AC.	560	APARTMENT
Q	50.177 AC.	803	APARTMENT
R	4.532 AC.		RESTRICTED COMMON PROPERTY
S	6.001 AC.		RESTRICTED COMMON PROPERTY
T	25.389 AC.		RESTRICTED COMMON PROPERTY
U	145.930 AC.		GOLF COURSE
V	18.845 AC.		RECREATION
W	18.628 AC.		ROAD R/W
X	16.365 AC.		PUBLIC R/W
Y	21.683 AC.		RESTRICTED COMMON AREA (R/W)
Z	489.234 AC.	2207	

ACREAGE

NOTE: Bearings shown hereon are based on a bearing of S. 89° 50' 07" W. along the South right-of-way line of Palmetto Park Road, as shown on the record plat of Boca Del Mar No. 6 as recorded in Plat Book 30, Pages 142 and 143 of the public records of Palm Beach County, Florida.

NOTE: No buildings, trees, shrubs will be placed on easements.

NOTE: All Tracts (J, K, L, M, N, O, P, and Q) must be replatted prior to development.

SHEET INDEX
SHEET 1 - TITLE SHEET
SHEET 2, 3 - DETAIL SHEETS

0211-303
Boca Pointe #1
42
143

This instrument was prepared by:
John A. Grant, Jr., John A. Grant, Jr., Inc.
3333 North Federal Highway, Boca Raton, Florida