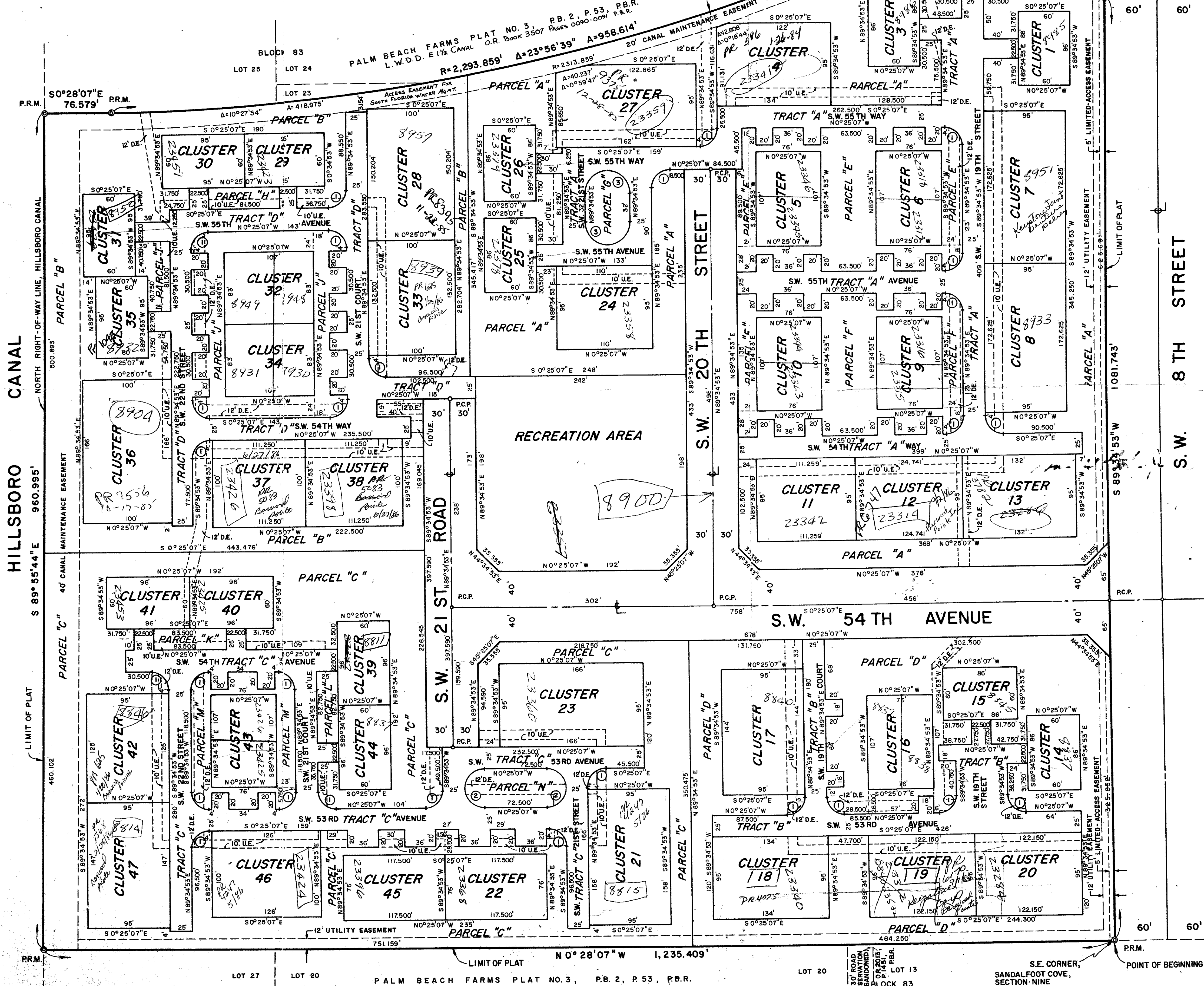
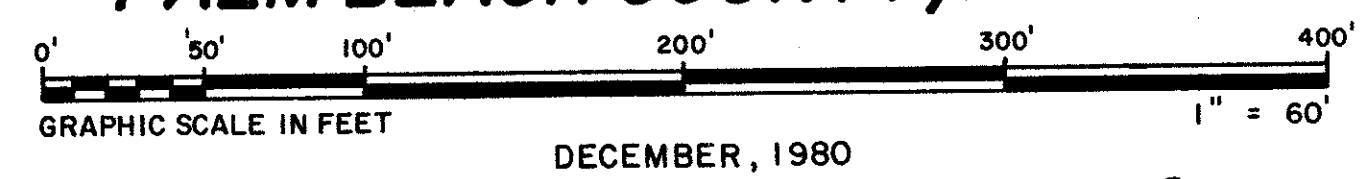


42/145

Plat of "SANDALFOOT COVE, SECTION-TEN"

BEING A REPLAT OF PORTIONS OF PALM BEACH FARMS
PLAT NO. 3, PLAT BOOK 2, PAGE 53,
SECTION 32, TOWNSHIP 47 SOUTH, RANGE 42 EAST,
PALM BEACH COUNTY, FLORIDA



CANAL E-1 1/2
(LAKEWORTH DRAINAGE DISTRICT)

145



SHEET 2 OF 2 SHEETS

THIS INSTRUMENT PREPARED BY: DENNIS F. BAUER
McLAUGHLIN ENGINEERING CO.
400 N.E. 3rd AVENUE, FORT LAUDERDALE, FLORIDA
Phone: 763-7611 33301

LEGEND

- indicates 5' Limited-Access Easement
- indicates 12' Total Drainage Easement
- indicates 10' Total Utility Easement

NOTES

- There shall be no buildings, structures, trees or shrubs placed in utility or drainage easements.
- There shall be no surface appurtenances permitted on canal maintenance easements.
- PR.M. indicates Permanent Reference Monument.
- PC.P. indicates Permanent Control Point.
- THIS PLAT CONTAINS 29.8470 ACRES.
- P.B.R. indicates Palm Beach County Records.
- Utilities, including franchised utilities, power and light and telegraph, water, sewer, cable television, wiring to street lights, and gas shall be installed underground.
- Section data unavailable in this area. All surveys based upon block corners of PALM BEACH FARMS PLAT NO. 3, P.B. 2, P. 53, P.B.R.
- Bearings refer to an assumed meridian on the South line of Sandalfoot Cove, Section Nine, P.B. 38, P. 199 & P. 200, P.B.R.

CURVE DATA					
NO.	RADIUS	DELTA	ARC	TANGENT	CHORD
1	20'	90°00'00"	31.416'	20'	28.284'
2	22.500'	180°00'00"	70.686'	-	45'
3	26.500'	180°00'00"	85.282'	-	55'

SANDALFOOT COVE #10

42 / 145

0306-005