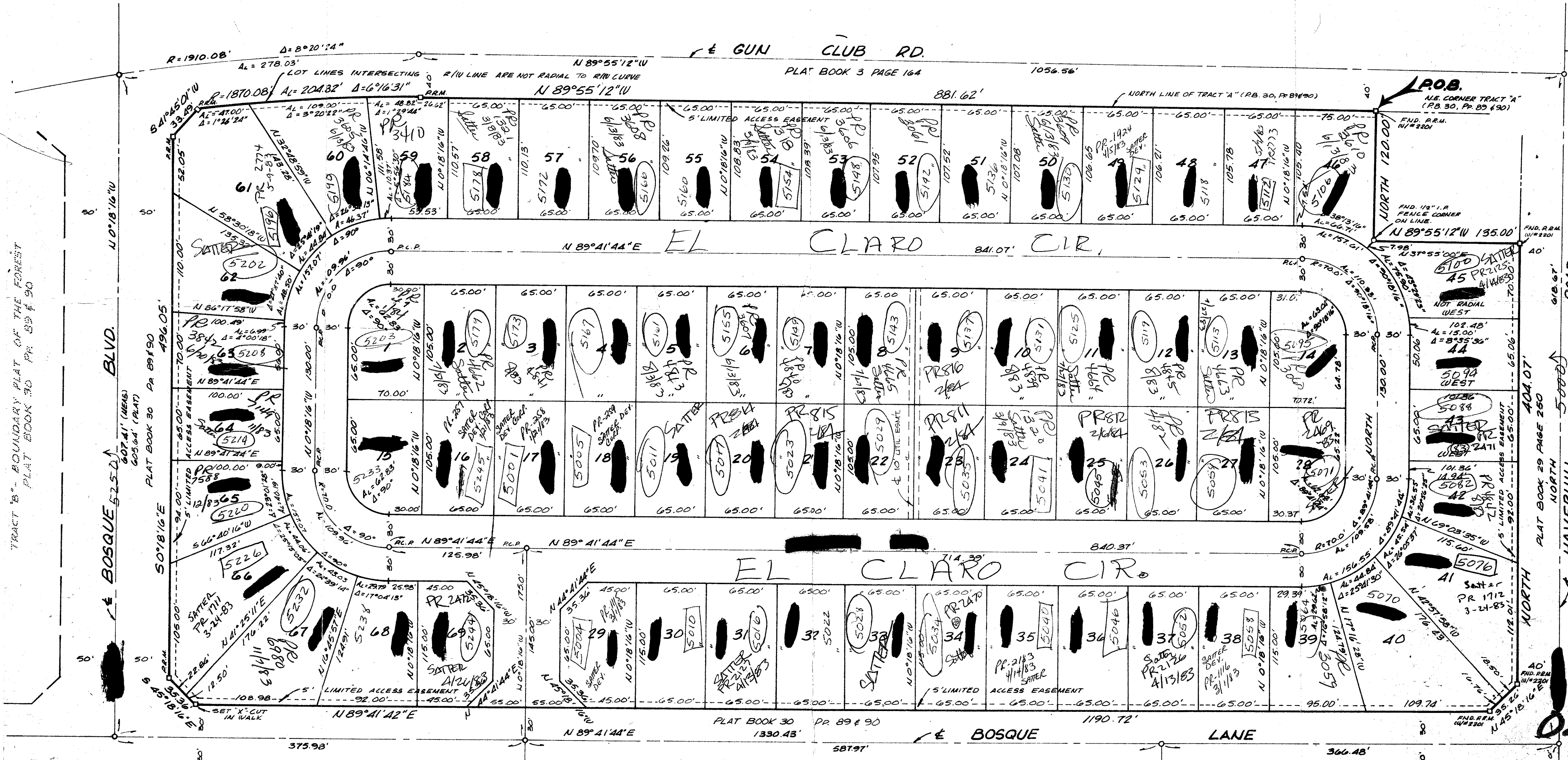


42/176

PLAT NO. 5 "THE FOREST HOMES" SHEET 2 OF 2

176

42



TRACT "B" - BOUNDARY PLAT OF THE FOREST HOMES - PLAT BOOK 30 PP. 89 & 90

TRACT "C" - BOUNDARY PLAT OF THE FOREST HOMES - PLAT BOOK 30 PP. 89 & 90

THE FOREST HOMES - PLAT NO. 1
PLAT BOOK 32 PP. 89 & 100

TRACT "D" - BOUNDARY PLAT OF THE FOREST HOMES - PLAT BOOK 32 PP. 89 & 100

NOTE: ALL LOT LINES ARE RADIAL UNLESS OTHERWISE NOTED.

VEREDA CIR.

Field Book
No. C-170 Pg. 12
Design
L. DAVIS
Drawn
L. HAYES
Checked
C. DAVIS
Field
R. FRALICK

ROBERT E. OWEN & ASSOCIATES, INC.
ENGINEERS · PLANNERS · SURVEYORS
WEST PALM BEACH
FLORIDA

PLAT NO. 5
"THE FOREST HOMES"

Job No. 78-1119
Scale 1" = 50'
Date JULY, 1978
Sheet 2 of 2
File No. BF-2194-E

0243-002

42/176