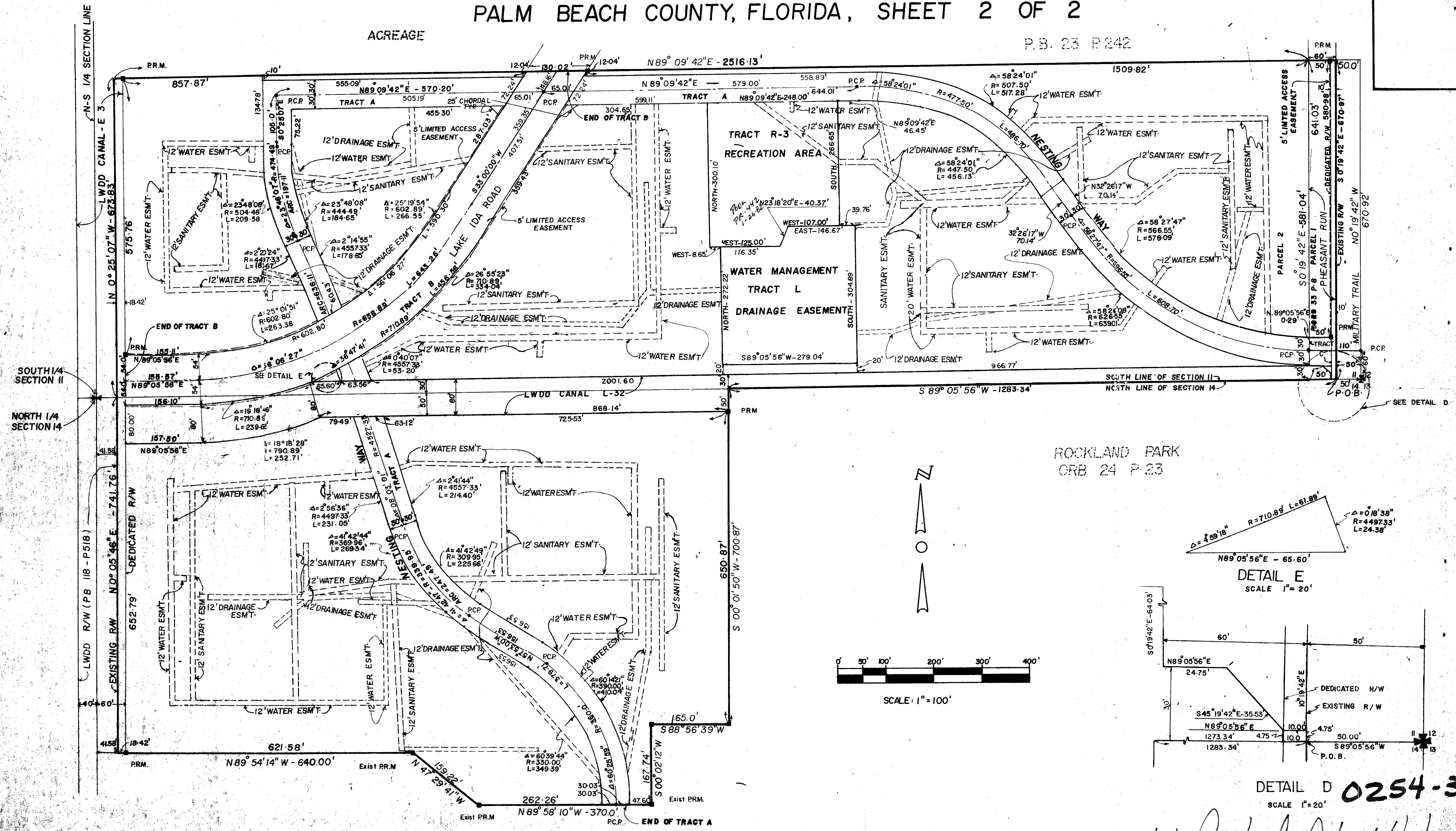


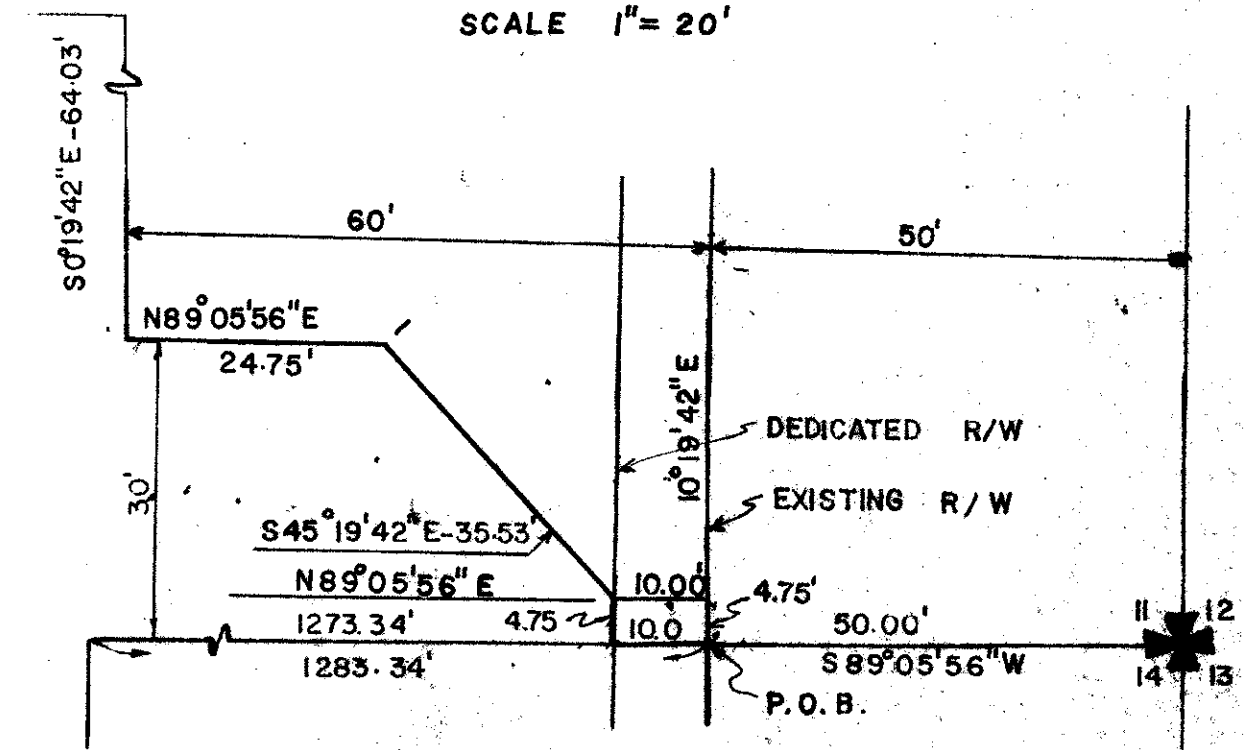
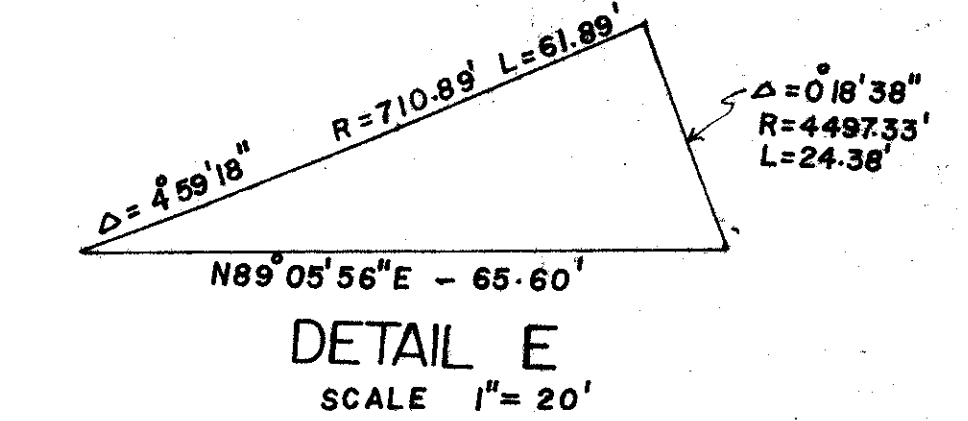
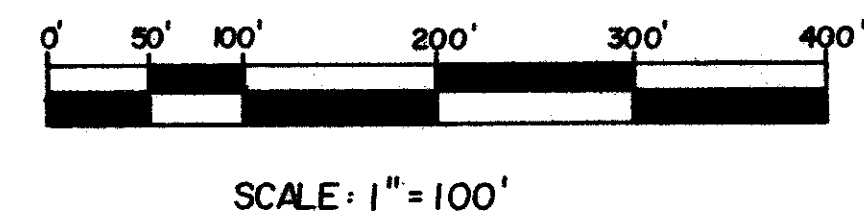
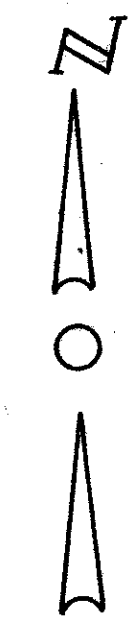
42/181

HIGH POINT OF DELRAY WEST PLAT 3

A REPLAT OF PHEASANT RUN (P B 33 P 8) & A PLAT OF A PART OF SECTION 11 & 14 T 46 S, R 42 E, PALM BEACH COUNTY, FLORIDA, SHEET 2 OF 2



ROCKLAND PARK
ORB 24 P-23



HIGH POINT OF DELRAY WEST PLAT NO 1
ORB 38 PAGES 128 & 129

0254-300
SCALE 1" = 20'

High Point of Delray West #3