

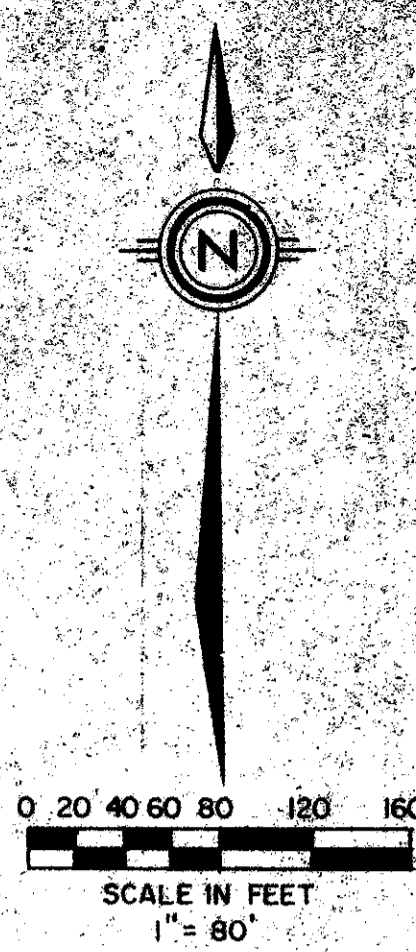
43/12

# PINERIDGE AT HAVERHILL A P.U.D.

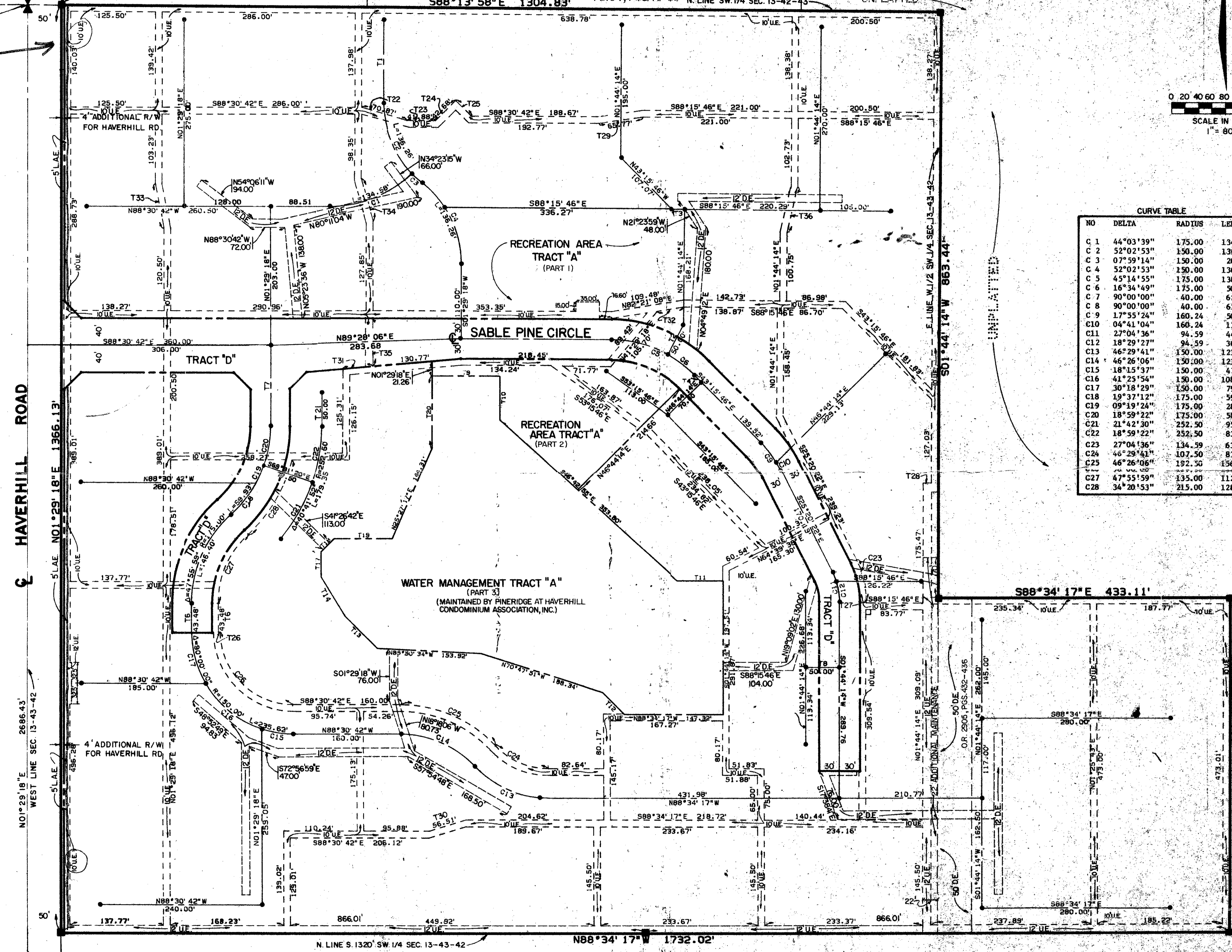
A PARCEL OF LAND LYING IN THE SOUTHWEST ONE-QUARTER OF SECTION 13, TOWNSHIP 43 SOUTH, RANGE 42 EAST, PALM BEACH COUNTY, FLORIDA  
JUNE, 1981 *SEE SUB. FILE FOR ADD.*  
FOXWOOD ESTATES PLAT NO. 1  
PB. 34, PGS. 78-80 N. LINE SW 1/4 SEC. 13-42-43  
SHEET 2 OF 2

12

STATE OF FLORIDA  
COUNTY OF PALM BEACH  
THIS PLAT WAS FILED FOR RECORD AT THIS DAY OF AD, 1981 AND DULY RECORDED IN PLAT BOOK ON PAGES AND  
JOHN B. DUNKLE, CLERK  
CIRCUIT COURT  
BY: DC



WEST 1/4 CORNER SEC. 13-43-42  
FD. PALM BCH. CO.  
BRASS DISK SET  
IN CONC.  
Note:  
Preservation  
R-82-354  
VACATING THE  
WESTERLY 3' OF  
10' DE ALONG  
WEST PROPERTY  
LINE



CURVE TABLE

NO	DELTA	RADIUS	LENGTH
C 1	44°03'39"	175.00	134.58
C 2	52°02'53"	150.00	136.26
C 3	07°59'14"	150.00	20.91
C 4	52°02'53"	150.00	136.26
C 5	45°14'55"	175.00	138.20
C 6	16°34'49"	175.00	50.64
C 7	90°00'00"	40.00	62.83
C 8	90°00'00"	40.00	62.83
C 9	17°55'24"	160.24	50.13
C 10	04°41'04"	160.24	13.10
C 11	27°04'36"	94.59	44.70
C 12	18°29'27"	94.59	30.53
C 13	46°29'41"	150.00	121.72
C 14	46°26'06"	150.00	121.57
C 15	18°15'37"	150.00	47.81
C 16	41°25'54"	150.00	108.47
C 17	30°18'29"	150.00	79.35
C 18	19°37'12"	175.00	59.93
C 19	08°19'24"	175.00	28.48
C 20	18°59'22"	175.00	58.00
C 21	21°42'30"	252.50	95.67
C 22	18°59'22"	252.50	83.69
C 23	27°04'36"	134.59	63.61
C 24	46°29'41"	107.50	87.24
C 25	46°26'06"	192.50	156.01
C 27	47°55'59"	195.00	112.94
C 28	34°20'53"	215.00	128.89

"T" TABLE

NO	BEARING	DISTANCE
T 1	N 01°29'18"E	121.44
T 2	N 30°09'24"E	50.00
T 3	N 88°15'46"W	20.00
T 4	S 43°15'46"W	15.00
T 5	S 48°44'14"W	30.00
T 6	N 01°29'18"W	65.00
T 7	N 01°29'18"W	120.00
T 8	N 88°15'46"W	50.00
T 9	S 88°30'42"E	100.00
T 10	S 01°29'18"W	65.00
T 11	S 88°15'46"E	68.20
T 12	N 43°15'46"W	45.97
T 13	N 43°24'17"W	78.01
T 14	S 26°10'34"E	58.98
T 15	N 43°55'31"W	36.37
T 16	N 46°29'18"W	82.00
T 17	N 01°29'18"E	35.00
T 18	N 46°29'18"E	27.85
T 19	S 88°30'42"E	84.02
T 20	N 01°29'18"E	107.75
T 21	N 01°29'18"E	50.00
T 22	S 72°41'14"E	70.87
T 23	S 88°30'42"E	41.88
T 24	N 46°29'18"E	42.88
T 25	S 43°20'42"E	32.83
T 26	S 86°30'42"E	47.90
T 27	N 01°44'14"E	2.50
T 28	S 88°15'46"E	12.00
T 29	N 82°57'14"E	65.77
T 30	N 74°14'18"E	56.51
T 31	N 86°29'10"E	13.36
T 32	N 82°20'55"E	40.63
T 33	N 09°37'33"E	62.24
T 34	N 44°19'16"W	65.08
T 35	N 01°29'18"E	71.46
T 36	N 44°46'37"E	56.56

0295-000

NOTE: ALL BEARINGS SHOWN HEREON ARE RELATIVE TO THE FLORIDA STATE PLANE COORDINATE SYSTEM WITH 00°00'00"E BEING GRID NORTH.

Meridian Surveying and mapping inc. WEST PALM BEACH, FLORIDA

DATE	JUNE, 1981
CHECKED	SCALE 1" = 80'
DRAWING NO.	P0-053

PINERIDGE AT HAVERHILL A P.U.D.

43/12