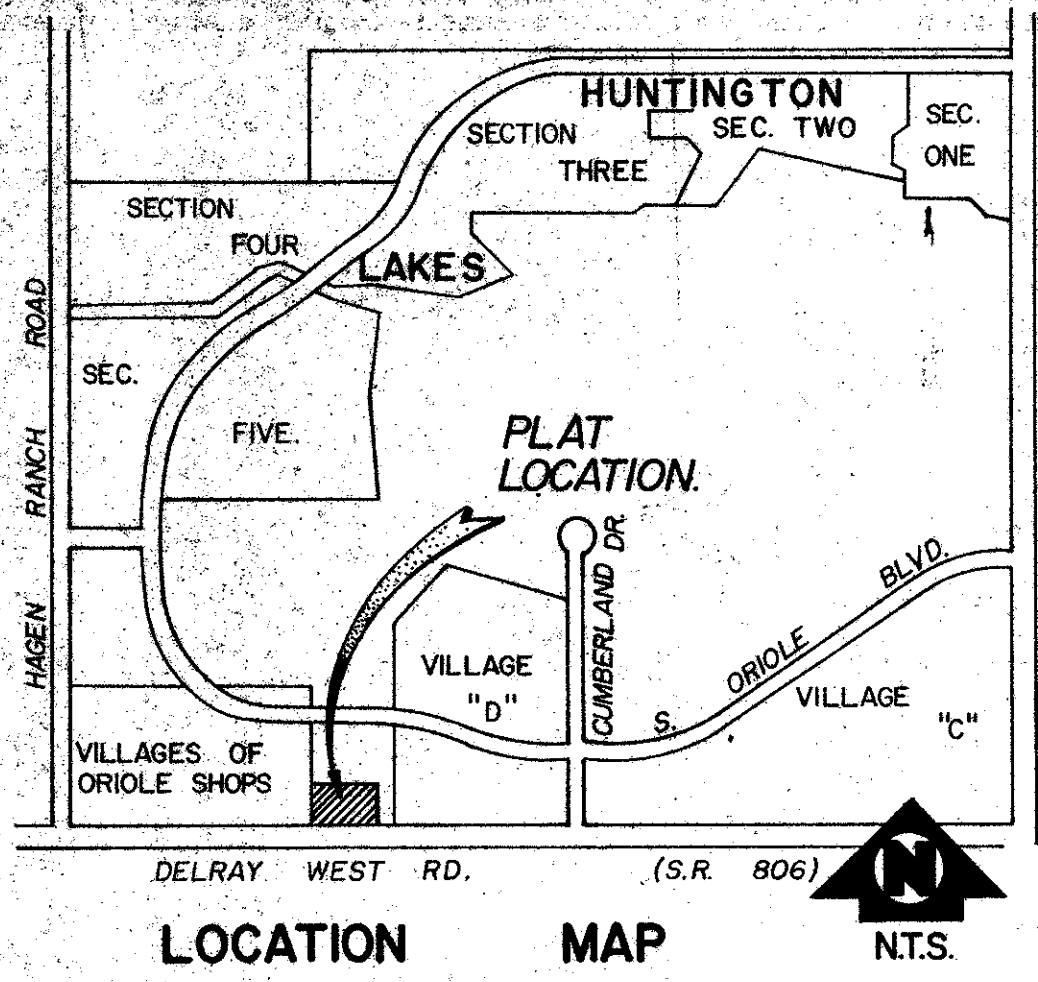


431104



PART OF A P.C.D.

VILLAGES OF ORIOLE SHOPS, PLAT No. TWO

BEING A PARCEL OF LAND LYING IN THE SOUTHEAST QUARTER (S.E. 1/4)
OF SECTION 16, TOWNSHIP 46 SOUTH, RANGE 42 EAST
AND BEING A REPLAT OF A PORTION OF TRACT "A"
PLAT No. 1, VILLAGES OF ORIOLE (PLAT BK. 30, PAGES 38, 39 AND 40)
PALM BEACH COUNTY, FLORIDA.

Prepared By: CRAIG A. SMITH & ASSOCIATES, CONSULTING ENGINEERS & SURVEYORS, CORAL SPRINGS, FLORIDA. By: Edward Mizo, P.L.S. No. 3376

104

STATE of FLORIDA } S.S.
COUNTY of PALM BEACH }
THIS PLAT WAS FILED FOR RECORD AT 10:13 AM ON THE 29 DAY OF October 1981, AND DULY RECORDED IN PLAT BOOK 43, PAGES 104

JOHN B. DUNKLE
CLERK of CIRCUIT COURT

BY: *Ed Mizo*
Edward Mizo

SHEET 1 OF 1 SHEET

DESCRIPTION & DEDICATION:

Know all men by these presents that ORIOLE HOMES CORP, a Florida corporation, owner of the land shown hereon, being in Section 16, Township 46 South, Range 42 East, Palm Beach County, Florida, shown hereon as VILLAGES OF ORIOLE SHOPS PLAT No. TWO being a replat of a portion of Tract "A", PLAT No. 1 VILLAGES OF ORIOLE (P.B. 30, PAGES 38, 39 & 40), more particularly described as follows:

A portion of Tract "A", PLAT No. 1 VILLAGES OF ORIOLE, according to the plat thereof, as recorded in Plat Book 30, Pages 38, 39, & 40 of the Public Records of Palm Beach County, Florida, more particularly described as follows:
BEGIN at the Southeast corner of Parcel C-1, VILLAGES OF ORIOLE SHOPS as recorded in Plat Book 35, Pages 9 & 10 of the Public Records of Palm Beach County, Florida; thence North 01°15'47" East along the East boundary of said Parcel C-1, a distance of 265.00 feet; thence South 89°40'59" East, 491.01 feet; thence South 00°19'01" West, 264.96' to a point on the North boundary of Tract "G" as shown on said PLAT No. 1 VILLAGES OF ORIOLE; thence North 89°40'59" West along said boundary, 495.39 feet to the POINT OF BEGINNING.

Said lands lying in Palm Beach County, Florida, containing 3.000 acres more or less. Has caused the same to be surveyed and platted as shown hereon and do hereby dedicate as follows:

1. Limited Access Easements—The limited access easements as shown are dedicated to the Board of County Commissioners of Palm Beach County, Florida, for the purposes of control and jurisdiction over access rights.

IN WITNESS WHEREOF, the above named corporation has caused these presents to be signed by its President and attested by its Assistant Secretary and its corporate seal affixed hereto by and with authority of its board of directors, this 5 day of October, A.D. 1981

Attest: *[Signature]* Oriole Homes Corp.
A NUNEZ, Assistant Secretary

[Signature] R.D. LEVY, President

OWNERS ACKNOWLEDGEMENT

STATE of FLORIDA } S.S.
COUNTY of BROWARD }
Before me personally appeared R.D. Levy and A. Nunez to me well known and known to me to be the individuals described in and who executed the foregoing instrument as President and attested to by the Assistant Secretary of the above named ORIOLE HOMES CORP. a Florida corporation, and severally acknowledged to and before me that they executed such instrument as such President and Assistant Secretary respectively, of said corporation, and that the seal affixed to the foregoing instrument is the corporate seal of said corporation and that it was affixed to said instrument by due and regular corporate authority, and that said instrument is the free act and deed of said corporation.

WITNESS my hand and official seal this 5 day of October, A.D., 1981

[Signature] Ruth Milisitz
Notary Public
My Commission Expires 6-20-84

TITLE CERTIFICATE

STATE of FLORIDA } S.S.
COUNTY of BROWARD }
We, Alpha Title Company, a title insurance company, duly licensed in the State of Florida, do hereby certify that we have examined the title to the hereon described property; that we find the title to the property is vested to ORIOLE HOMES CORP; that the current taxes have been paid; and that we find the property is free of encumbrances.

ALPHA TITLE COMPANY
Date: 9-28-81
By: *[Signature]*
E. E. HUBSHMAN, Vice President

APPROVAL—PALM BEACH COUNTY, FLORIDA

BOARD OF COUNTY COMMISSIONERS
This plat is hereby approved for record this 27 day of October, A.D. 1981
By: *[Signature]*
FRANK FOSTER
Chairman, Palm Beach County, Board of County Commissioners

COUNTY ENGINEER
This plat is hereby approved for record this 27 day of October, A.D. 1981
By: *[Signature]*
HERBERT F. KAHLERT
Palm Beach County Engineer

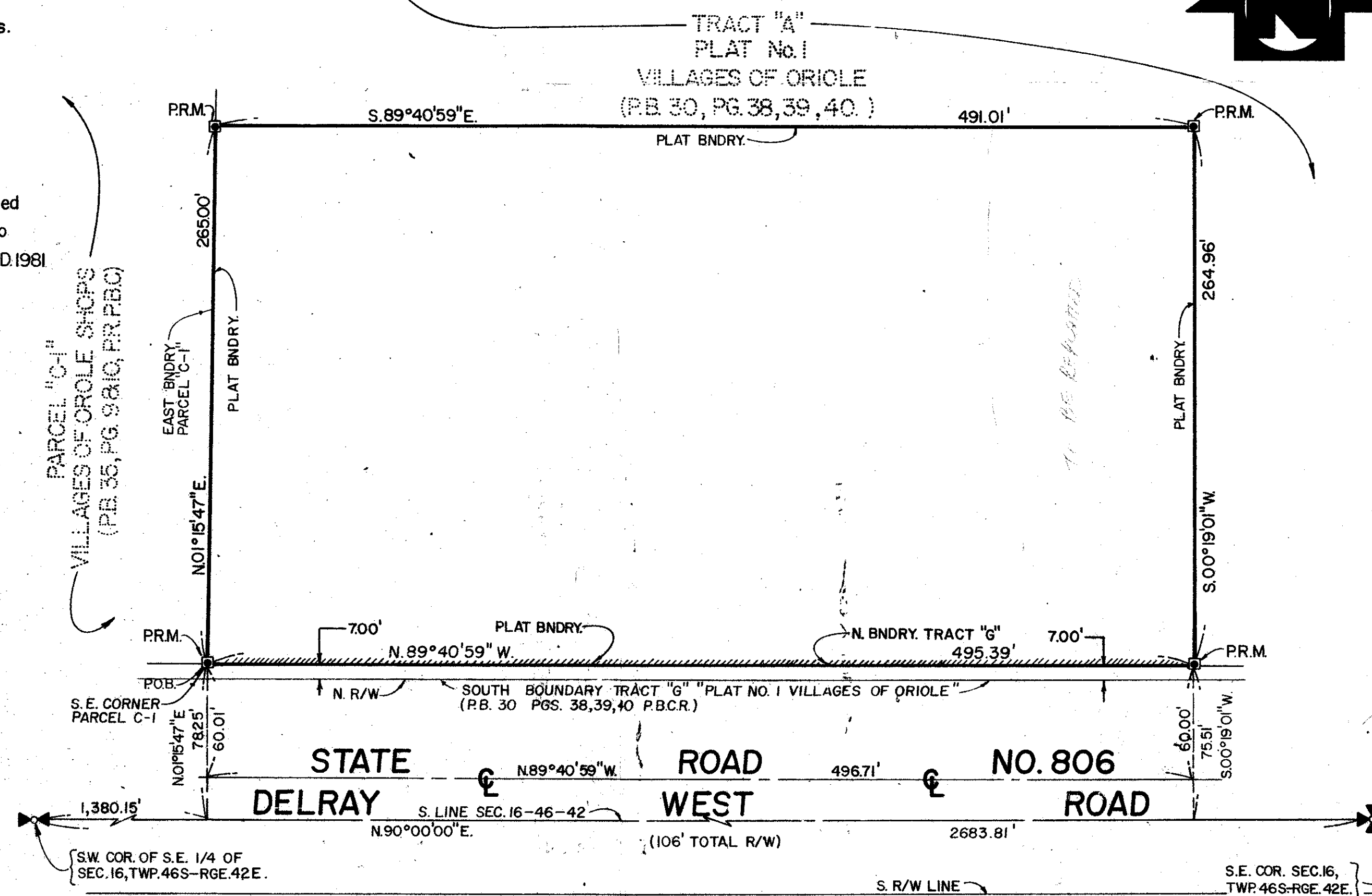
ATTEST: JOHN B. DUNKLE Clerk
BOARD OF COUNTY COMMISSIONERS
By: *[Signature]*
Deputy Clerk

SURVEYORS CERTIFICATE

This is to certify that the plat shown hereon is a true and correct representation of a survey made under my responsible direction and supervision and that said survey is accurate to the best of my knowledge and belief and that Permanent Reference Monuments (P.R.M.'s) and Permanent Control Points (P.C.P.'s) have been placed as required by law and further that the survey data complies with all the requirements of Chapter 177 Florida Statutes as amended, and ordinances of Palm Beach County, Florida.

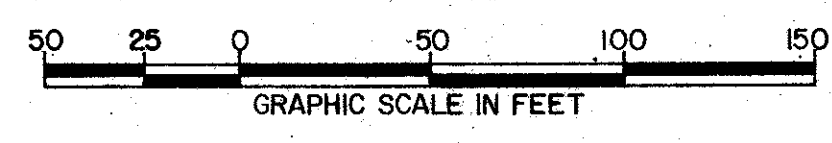
Date: *[Signature]*
CRAIG A. SMITH & ASSOCIATES
Consulting Engineers & Surveyors

By: *[Signature]*
Edward Mizo
Professional Land Surveyor
Florida Registration No. 3376

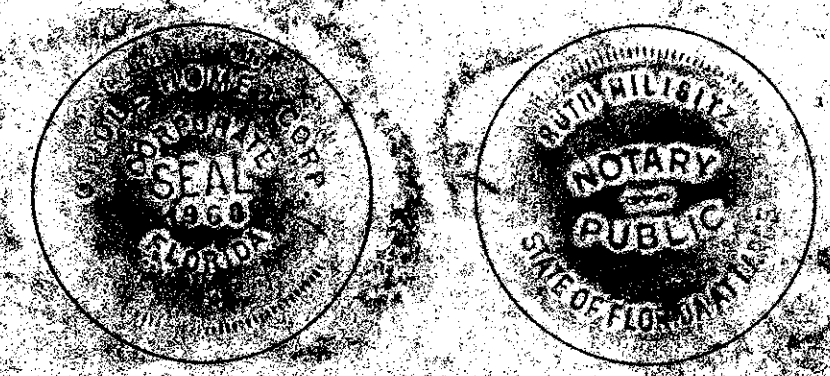


SURVEY NOTES:

1. "P.C.P." indicates Permanent Control Point (nail in survey cap).
2. "P.R.M." indicates Permanent Reference Monument.
3. Developers of this Tract shall be subject to all Palm Beach County requirements.
4. Bearings shown hereon are relative to Assumed Datum on Plat No. 1 Villages of Oriole (P.B. 30, pages 38, 39 & 40 P.B.C.R.)
5. Indicates 5.00' Limited Access Easement. (An authorized turnout will obviate that specific portion of Limited Access Easement.)



Oriole Homes Corp. Notary



Title Company County Commission County Engineer Surveyor

