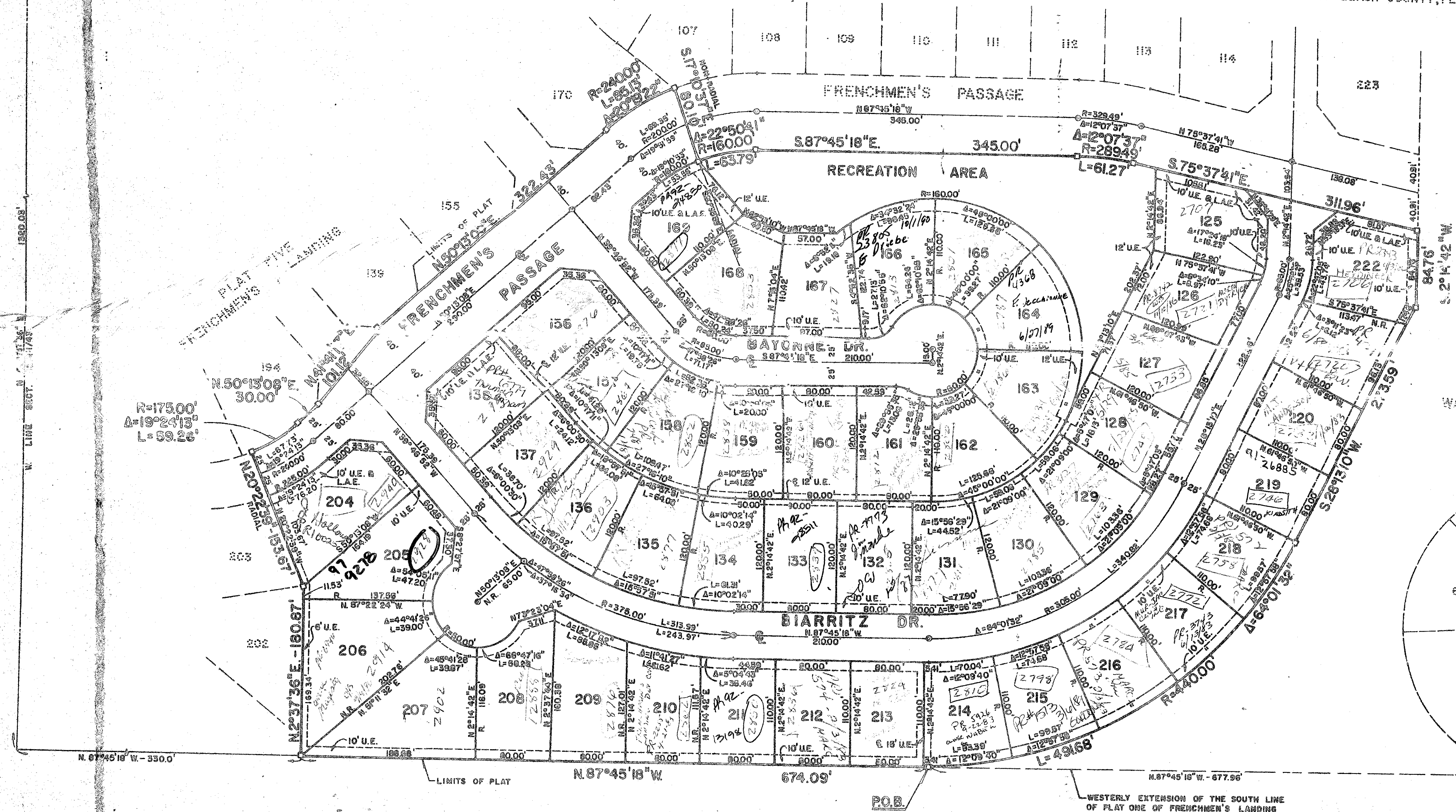
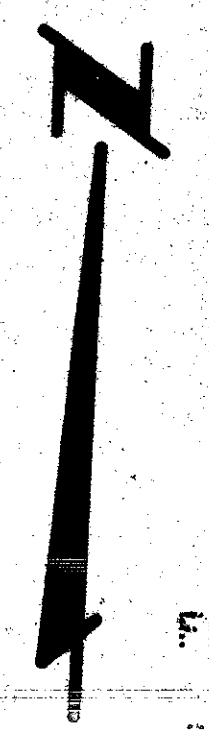
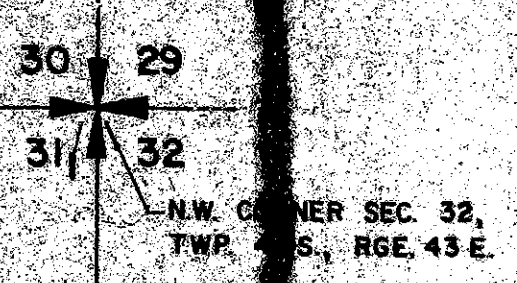


43/113

113

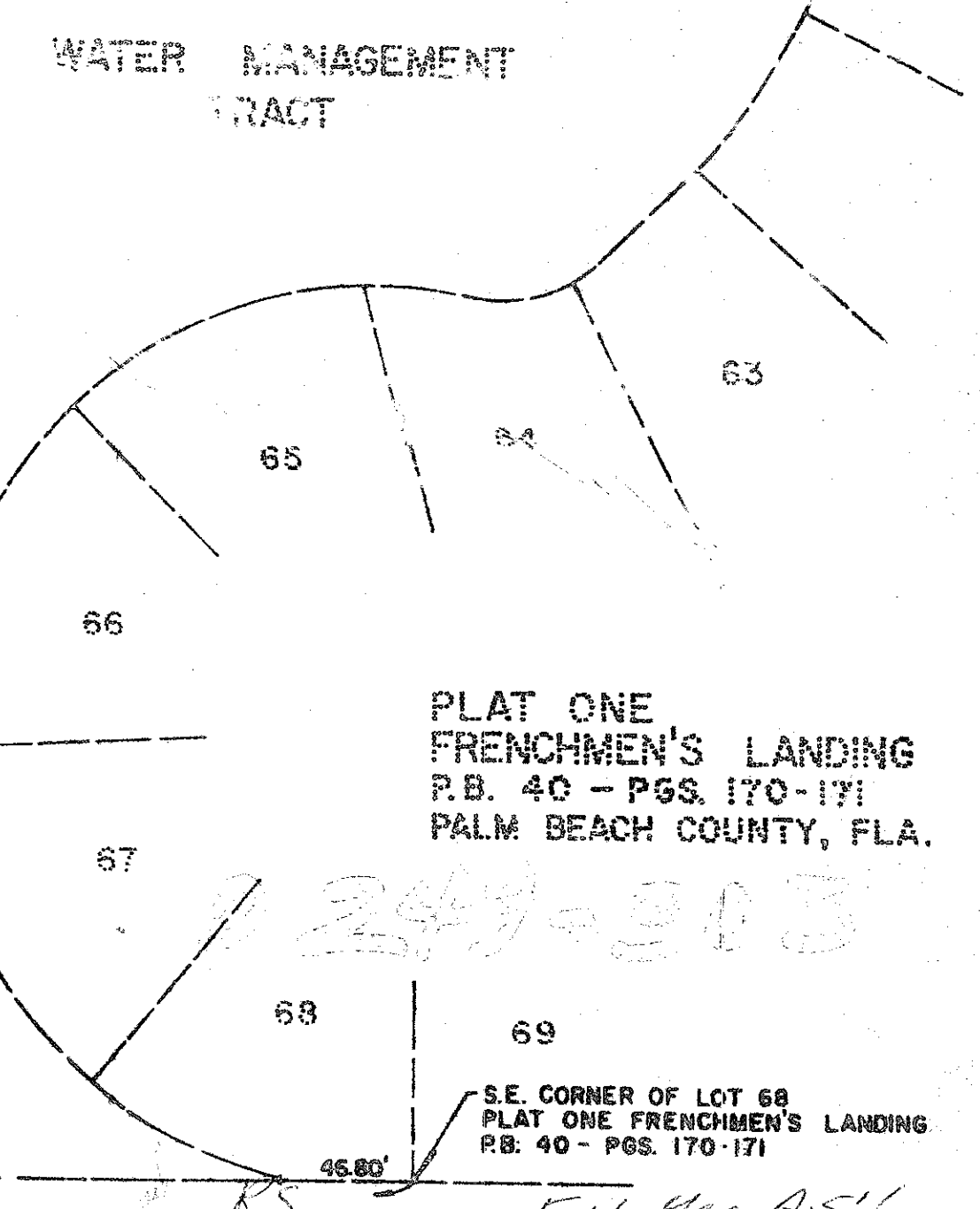
# PLAT FOUR FRENCHMEN'S LANDING

PLAT THREE  
FRENCHMEN'S LANDING  
P.B. 42 Pgs. 150-151  
PALM BEACH COUNTY, FLA.



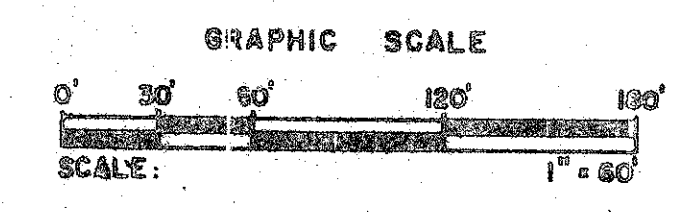
- NOTES:**
- There shall be no buildings or structures placed on public utility and buffer easements.
  - Bearings shown refer to an assumed bearing of South 02°57'21" West along the East line of the Northwest quarter of Section 32, Township 28 South, Range 43 East, Palm Beach County, Florida.
  - ⊙ = Denotes Permanent Control Point (P.C.P.)
  - ⊕ = Denotes Permanent Reference Monument (P.R.M.)
  - R = Denotes Radial Line
  - M.R. = Denotes Non-Radial Line
  - U.E. = Denotes Utility Easement
  - L.A.E. = Denotes Limited Access Easement
  - Where Utility and Drainage Easements intersect the Drainage Easement shall take precedence.
  - There shall be no buildings or any kind of construction or trees or shrubs placed on Drainage Easements.

This Instrument Prepared By:  
 Craig L. Wallace  
 William S. Wallace Inc.  
 Consulting Engineers and Land Surveyors  
 321 Northlake Boulevard  
 North Palm Beach, Florida 33408



NOT PLATTED

WESTERLY EXTENSION OF THE SOUTH LINE OF PLAT ONE OF FRENCHMEN'S LANDING PLAT BOOK 40 - PAGES 170 AND 171



<b>PLAT FOUR</b>		
<b>FRENCHMEN'S LANDING</b>		
<b>WILLIAM S. WALLACE, INC.</b> CONSULTING ENGINEERS, LAND PLANNERS & SURVEYORS 321 NORTH LAKE BLVD., NC. PALM BEACH, FLA. 33408 • 305.842.4237 3201 SW MARSH RD., PALM CITY PLAZA, PALM CITY, FLA. 32909 • 305.763.0200		
FIELD	JOB NO. <b>J79-91</b>	FS <b>PC</b>
OFFICE	DATE <b>MARCH 81</b>	DWG. NO. <b>79-63</b>
C'D <b>CLW</b>	REF	SHEET <b>OF</b>