

43/118

ARBOR WOOD VILLAS P.U.D.

BEING A REPLAT OF A PORTION OF BLOCK 79, PALM BEACH FARMS COMPANY PLAT NO. 3, PLAT BOOK 2, PAGES 45 THROUGH 54, PUBLIC RECORDS OF PALM BEACH COUNTY, FLORIDA. LYING IN SECTIONS 20 AND 29, TOWNSHIP 47 SOUTH, RANGE 42 EAST, PALM BEACH COUNTY, FLORIDA, AND BEING A REPLAT OF "RESIDENTIAL TRACT A," ARBOR WOOD ACCORDING TO THE PLAT THEREOF AS RECORDED IN PLAT BOOK 39 AT PAGES 116 AND 117 OF THE PUBLIC RECORDS OF PALM BEACH COUNTY, FLORIDA.

NOV. 1981

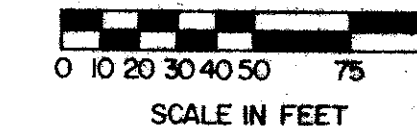
SHEET 2 OF 2

118

STATE OF FLORIDA
COUNTY OF PALM BEACH

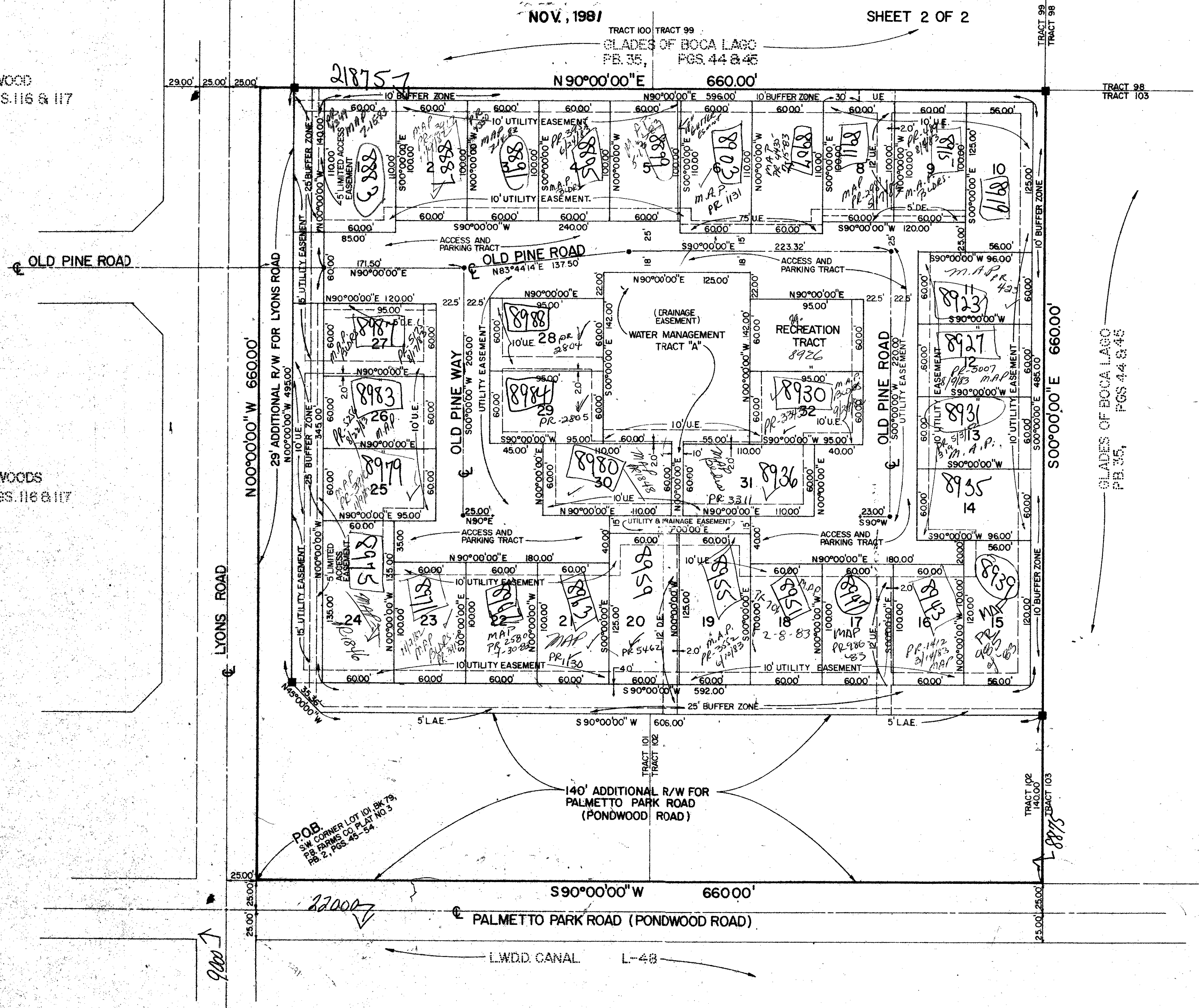
THIS PLAT WAS FILED FOR
RECORD AT
THIS DAY OF
NOV. 1981 AND DULY RECORDED
IN PLAT BOOK ON PAGES
AND

JOHN B. DUNKLE, CLERK
CIRCUIT COURT
BY: DC.



ARBOR WOOD
PB 39 PGS 116 & 117

ARBOR WOODS
PB 39 PGS 116 & 117



PLANNED UNIT DEVELOPMENT DATA	
TOTAL AREA THIS PLAT	10.0 ACRES
LESS INTERNAL ROAD R/W'S	1.5 ACRES
LESS ADDTN'L ROAD R/W FOR LYONS ROAD & PALMETTO PARK ROAD	2.5 ACRES
EFFECTIVE BASE RESIDENTIAL AREA	6.0 ACRES
TOTAL UNITS THIS PLAT	32
EFFECTIVE DENSITY	5.3 DU/AC
GROSS DENSITY	3.2 DU/AC
OPEN SPACE THIS PLAT	1.4 ACRES

0196-000
ARBOR WOOD VILLAS PUD
43/118 (SFD DETD CLUSTER)
RS-PUD
20/47/42
FT. AC 11

Meridian
Surveying and Mapping Inc.
2328 So. Congress Ave.
Suite 2-8
West Palm Beach, Florida 33408

ARBOR WOOD VILLAS NOV. 1981
Pg. 118 of 118

TURNOUT REQUIRED