

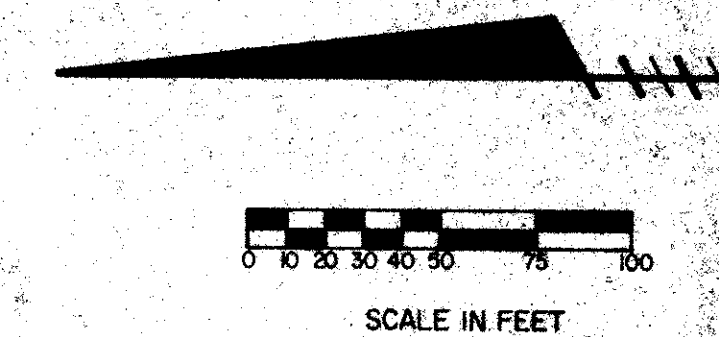
43/136

# WOODBIDGE LAKES

BEING A REPLAT OF THE WEST ONE-HALF OF LOT 2 AND THE EAST ONE-QUARTER OF LOT 3, BLOCK 3, "PALM BEACH PLANTATIONS", ACCORDING TO THE PLAT THEREOF, AS RECORDED IN PLAT BOOK 10 AT PAGE 20 OF THE PUBLIC RECORDS OF PALM BEACH COUNTY, FLORIDA.

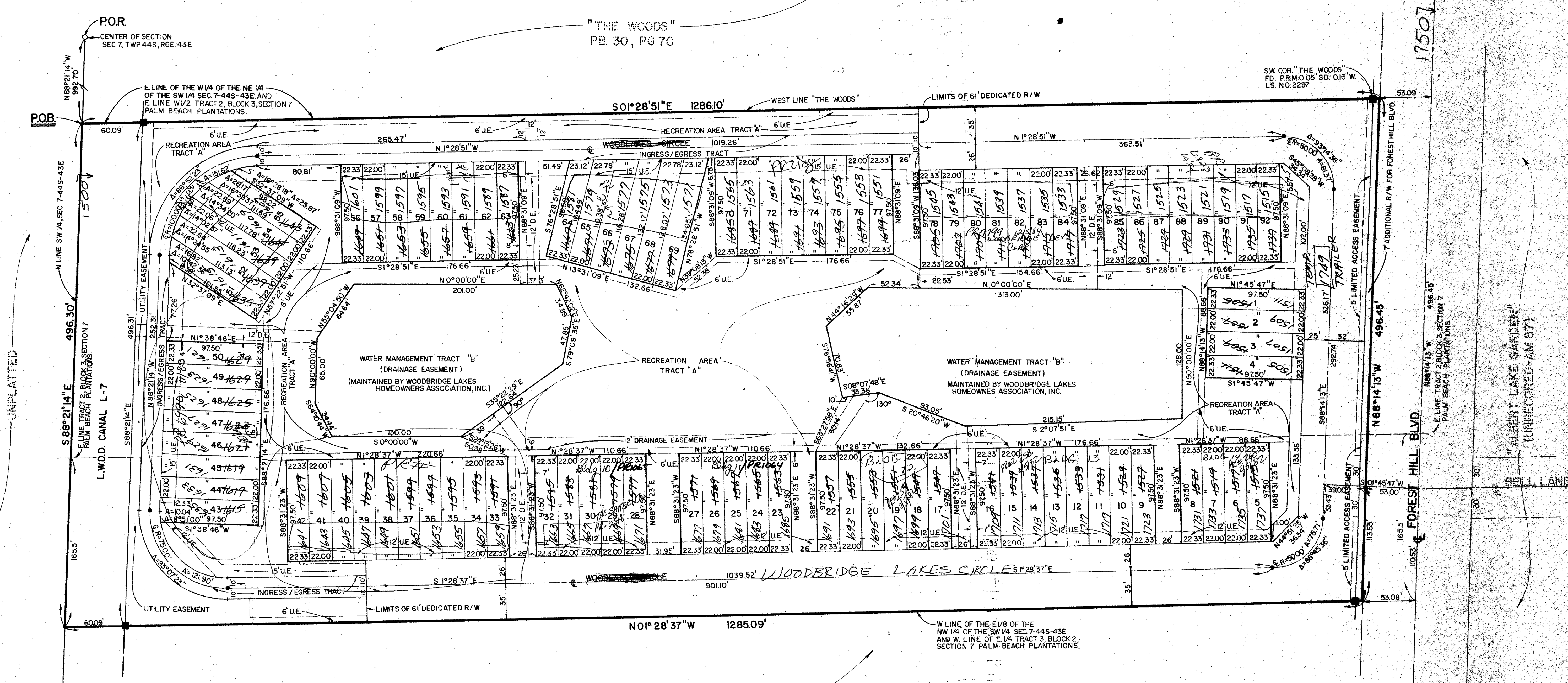
MARCH, 1981

SHEET 2 OF 2



# 136

STATE OF FLORIDA  
COUNTY OF PALM BEACH  
THIS PLAT WAS FILED FOR  
RECORD AT  
THIS DAY OF  
MAY, 1980 AND DULY RECORDED  
IN PLAT BOOK ON PAGES  
AND  
JOHN B. DUNKLE, CLERK  
CIRCUIT COURT  
BY: \_\_\_\_\_ OC.



UNPLATTED

1750'

496.45'

496.45'

53.08'

53.08'

1035'

165.5'

113.53'

1035'

165.5'

113.53'

1035'

165.5'

113.53'

1035'

165.5'

113.53'

1035'

165.5'

113.53'

1035'

165.5'

113.53'

1035'

165.5'

113.53'

1035'

165.5'

113.53'

1035'

165.5'

113.53'

1035'

165.5'

113.53'

1035'

165.5'

113.53'

1035'

165.5'

113.53'

1035'

165.5'

113.53'

1035'

165.5'

113.53'

1035'

165.5'

113.53'

1035'

165.5'

113.53'

1035'

165.5'

113.53'

1035'

165.5'

113.53'

1035'

165.5'

113.53'

1035'

165.5'

113.53'

1035'

165.5'

113.53'

1035'

165.5'

113.53'

1035'

165.5'

113.53'

1035'

165.5'

113.53'

1035'

165.5'

113.53'

1035'

165.5'

113.53'

1035'

165.5'

113.53'

1035'

165.5'

113.53'

1035'

165.5'

113.53'

1035'

165.5'

113.53'

1035'

165.5'

113.53'

1035'

165.5'

113.53'

1035'

165.5'

113.53'

1035'

165.5'

113.53'

1035'

165.5'

113.53'

1035'

165.5'

113.53'

1035'

165.5'

113.53'

1035'

165.5'

113.53'

1035'

165.5'

113.53'

1035'

165.5'

113.53'

1035'

165.5'

113.53'

1035'

165.5'

113.53'

1035'

165.5'

113.53'

1035'

165.5'

113.53'

1035'

165.5'

113.53'

1035'

165.5'

113.53'

1035'

165.5'

113.53'

1035'

165.5'

113.53'

1035'

165.5'

113.53'

1035'

165.5'

113.53'

1035'

165.5'

113.53'

1035'

165.5'

113.53'

1035'

165.5'

113.53'

1035'

165.5'

113.53'

1035'

165.5'

113.53'

1035'

165.5'

113.53'

1035'

165.5'

113.53'

1035'

165.5'

113.53'

1035'

165.5'

113.53'

1035'

165.5'

113.53'

1035'

165.5'

113.53'

1035'

165.5'

113.53'

1035'

165.5'

113.53'

1035'

165.5'

113.53'

1035'

165.5'

113.53'

1035'

165.5'

113.53'

1035'

165.5'

113.53'

1035'

165.5'

113.53'

1035'

165.5'

113.53'

1035'

165.5'

113.53'

1035'

165.5'

113.53'

1035'

165.5'

113.53'

1035'

165.5'

113.53'

1035'

165.5'

113.53'

1035'

165.5'

113.53'

1035'

165.5'

113.53'

1035'

165.5'

113.53'

1035'

165.5'

113.53'

1035'

165.5'

113.53'

1035'

165.5'

113.53'

1035'

165.5'

113.53'

1035'

165.5'

113.53'

1035'

165.5'

113.53'

1035'

165.5'

113.53'

1035'

165.5'

113.53'

1035'

165.5'

113.53'

1035'

165.5'

113.53'

1035'

165.5'

113.53'

1035'

165.5'

113.53'

1035'

165.5'

113.53'

1035'

165.5'

113.53'

1035'