

43/143

STURBRIDGE VILLAGE

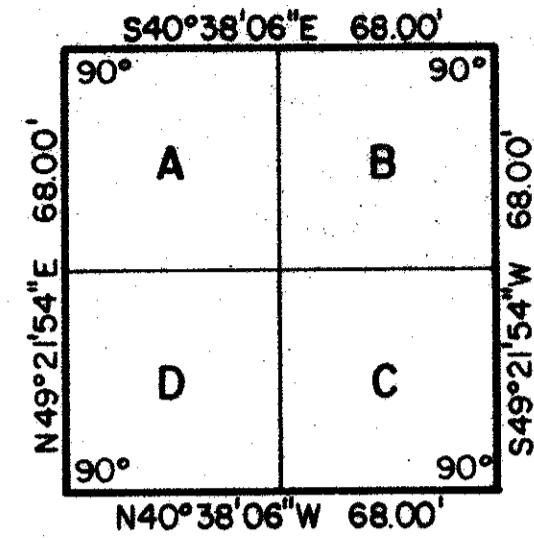
A PARCEL OF LAND BEING A RE-PLAT OF PARCELS A AND B, "SOUTH SHORE NO.3 OF WELLINGTON" ACCORDING TO THE PLAT THEREOF AS RECORDED IN PLAT BOOK 33 AT PAGES 1 THROUGH 3 OF THE PUBLIC RECORDS OF PALM BEACH COUNTY, FLORIDA.

JULY, 1981

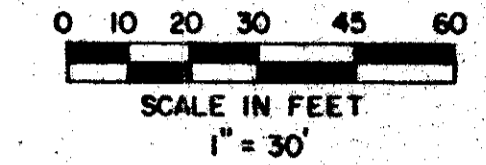
SHEET 2 OF 2

143

STATE OF FLORIDA
COUNTY OF PALM BEACH
THIS PLAT WAS FILED FOR
RECORD AT
THIS DAY OF
AD, 1981 AND DULY RECORDED
IN PLAT BOOK ON PAGES
AND
JOHN B. DUNKLE, CLERK
CIRCUIT COURT
BY: DC.



TYPICAL BUILDING ENVELOPE
1" = 30'



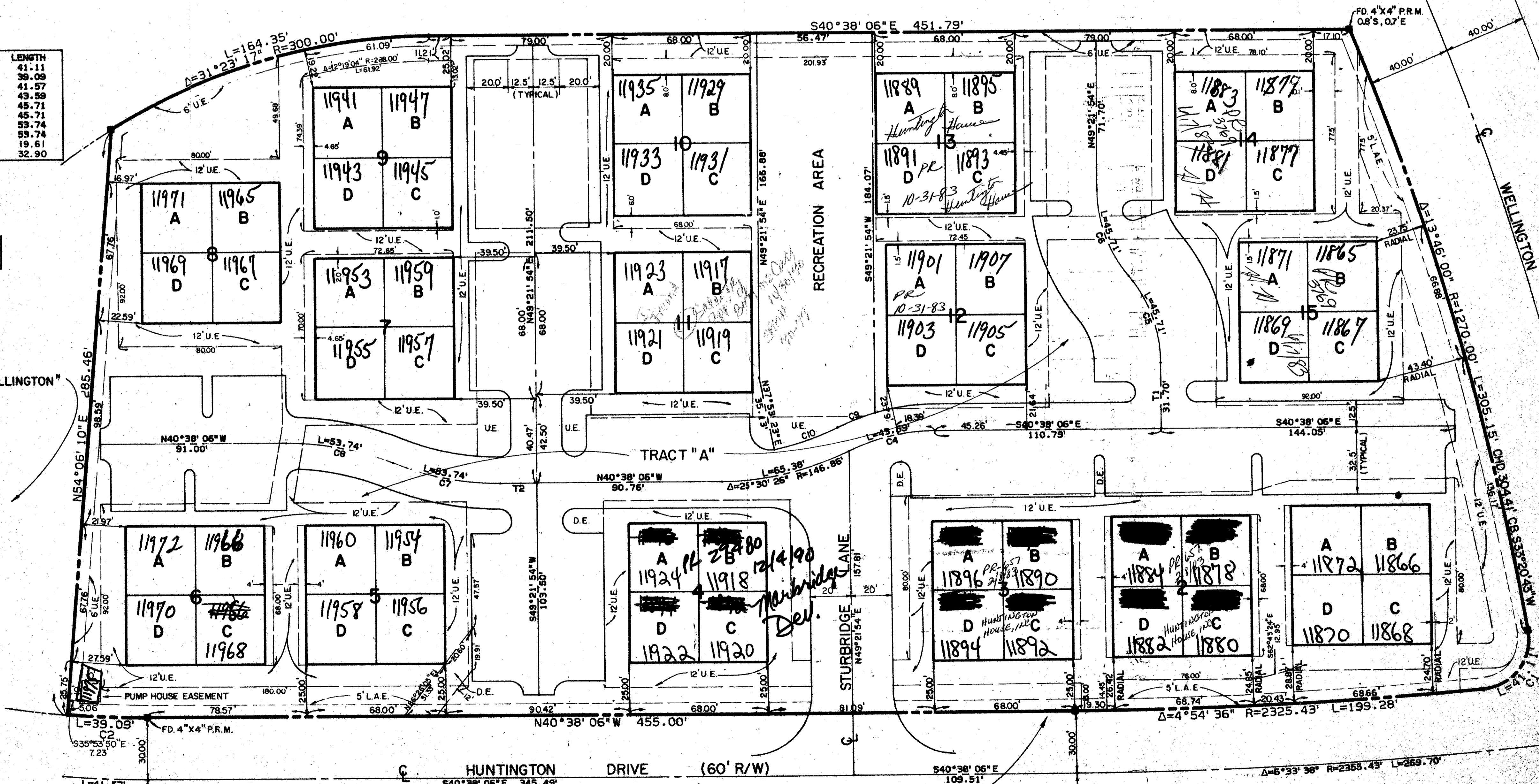
"SOUTH SHORE NO. 4 OF WELLINGTON"
P.B. 34, PG. 63

NO	DELTA	RADIUS	LENGTH
C1	94°13'03"	25.00	41.11
C2	4°44'16"	472.75	39.09
C3	4°44'16"	502.75	41.57
C4	25°30'26"	97.90	43.59
C5	39°48'03"	65.85	45.71
C6	39°48'04"	65.85	45.71
C7	21°34'41"	142.69	53.74
C8	21°34'41"	142.69	53.74
C9	10°10'42"	110.40	19.61
C10	14°01'55"	134.37	32.90

NO	BEARING	DISTANCE
T1	N49°21'54"E	31.70
T2	N40°38'06"W	17.62

"SOUTH SHORE NO. 3 OF WELLINGTON"
P.B. 33, PG. 1

"SOUTH SHORE NO. 2-A OF WELLINGTON"
P.B. 31, PG. 118



0332-345

43/143

"SOUTH SHORE NO. 1 OF WELLINGTON"
P.B. 29, PG. 222

"THE FRENCH QUARTER"
PLAT NO. 3
P.B. 37, PG. 127

Meridian Surveying and mapping Inc.
WEST PALM BEACH, FLORIDA

DATE	6-26-81
DRAWN	M.E.H.
CHECKED	SCALE 1" = 30'
TITLE	STURBRIDGE VILLAGE Wellington
PLANNING NO.	81-040