

43/145

145

A PLANNED UNIT DEVELOPMENT PLAT NO. 2 OF BOCA HEIGHTS PATIO HOMES PALM BEACH COUNTY, FLORIDA

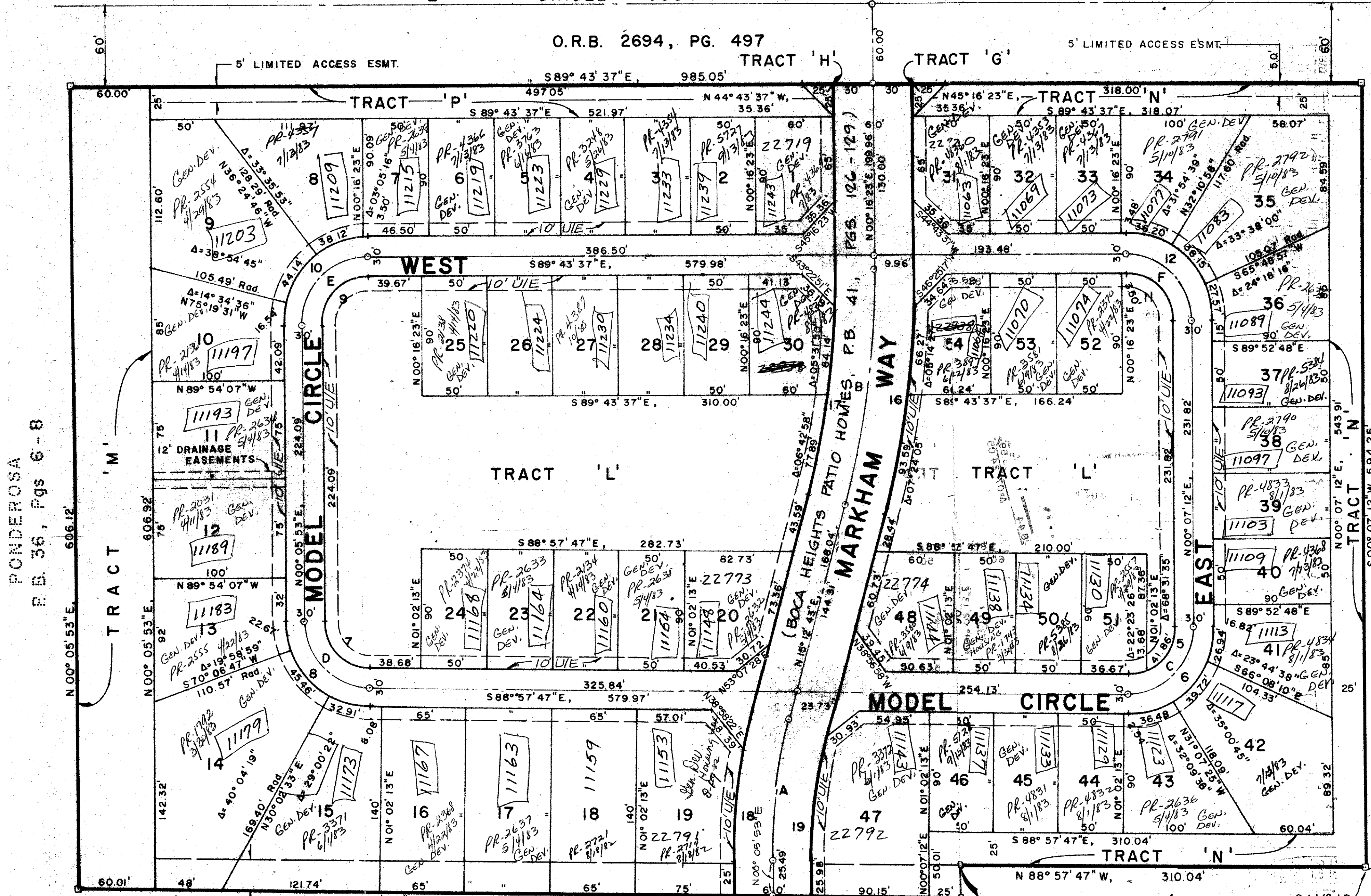
SHEET 2 OF 2

AUG., 1980

ORIOLE COUNTRY ROAD

O.R.B. 2694, PG. 497

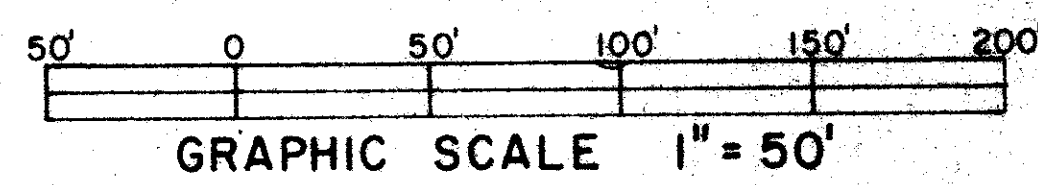
5' LIMITED ACCESS ESMT.



PONDEROSA
R.E. 36, Pgs 6-8

UNPLATTED

CURVE DATA					
N#	Δ	R	T	L	L.C.
A	15° 06' 50"	407.65'	54.08'	107.53'	107.22'
B	14° 56' 20"	694.49'	91.05'	181.08'	180.56'
C	90° 55' 01"	50'	50.81'	79.34'	71.27'
D	89° 03' 40"	50'	49.19'	77.72'	70.13'
E	90° 10' 30"	50'	50.15'	78.69'	70.82'
F	89° 50' 49"	50'	49.87'	78.41'	70.62'
1	76° 24' 55"	25'	19.68'	33.34'	30.93'
2	100° 18' 49"	25'	29.96'	43.77'	38.39'
3	75° 49' 30"	25'	19.47'	33.08'	30.72'
4	104° 10' 30"	25'	32.10'	45.45'	39.45'
5	90° 55' 01"	35'	35.56'	55.54'	49.89'
6	90° 55' 01"	65'	66.05'	103.14'	92.66'
7	89° 03' 40"	35'	34.43'	54.40'	49.09'
8	89° 03' 40"	65'	63.94'	101.04'	91.17'
9	90° 10' 30"	35'	35.11'	55.08'	49.57'
10	90° 10' 30"	65'	65.20'	102.30'	92.06'
11	89° 50' 49"	35'	34.91'	54.88'	49.43'
12	89° 50' 49"	65'	64.83'	101.93'	91.80'
13	90° 00' 00"	25'	25.00'	39.27'	35.36'
14	92° 41' 32"	25'	26.20'	40.44'	36.18'
15	87° 42' 12"	25'	24.02'	38.27'	34.64'
16	12° 38' 32"	724.49'	80.25'	159.86'	159.53'
17	12° 14' 48"	664.49'	71.29'	142.03'	141.76'
18	11° 15' 09"	437.65'	43.11'	85.95'	85.81'
19	14° 31' 25"	377.65'	48.12'	95.73'	95.47'



25' DRAINAGE ESMT.
(TRACT 'B' AS SHOWN
IN BOCA HEIGHTS
PATIO HOMES).

BOCA HEIGHTS
PATIO HOMES
P.B. 41, Pgs 126-129

P.O.B.
P.R.M. NO. 2 AS SHOWN
ON PLAT OF BOCA HEIGHTS
PATIO HOMES, AS SHOWN
IN PLAT BOOK 41,
PGS. 126 THROUGH 129.

0210-300

43/145

26 25
35 36

Field Book
No. B-190 Pg. 7
Design
C. GIVENS
Drawn
C. GIVENS
Checked
P. T. KRICK

ROBERT E. OWEN & ASSOCIATES, INC.
ENGINEERS - PLANNERS - SURVEYORS
WEST PALM BEACH
FLORIDA

PLAT NO. 2 OF
BOCA HEIGHTS
PATIO HOMES

79-1199
1" = 50'
AUG. 1980
2
BF-2318