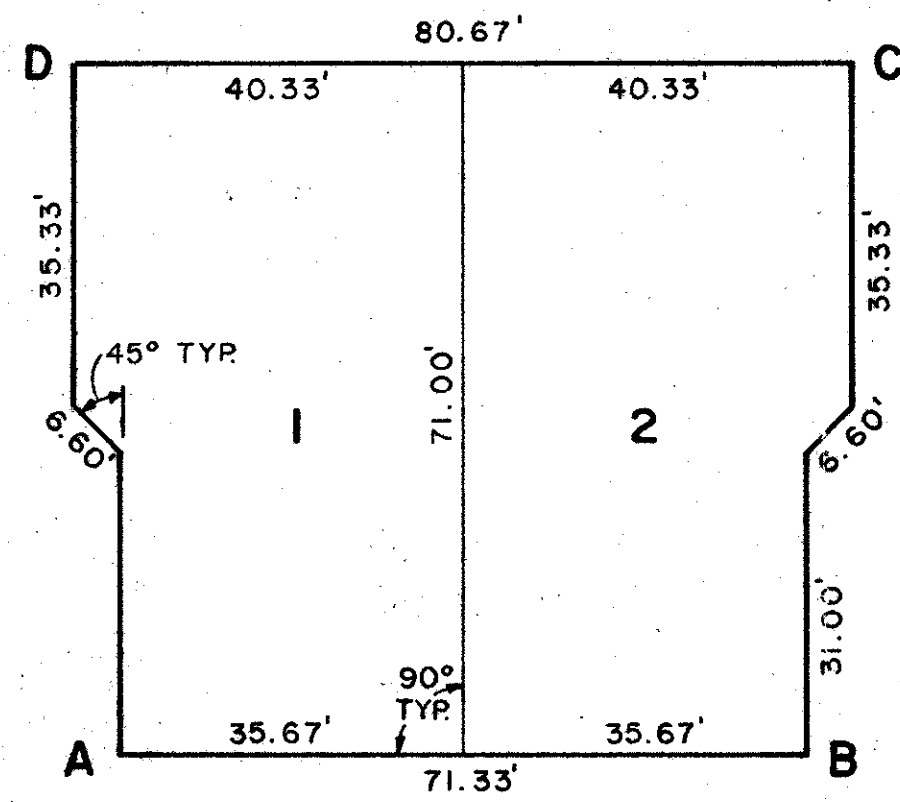


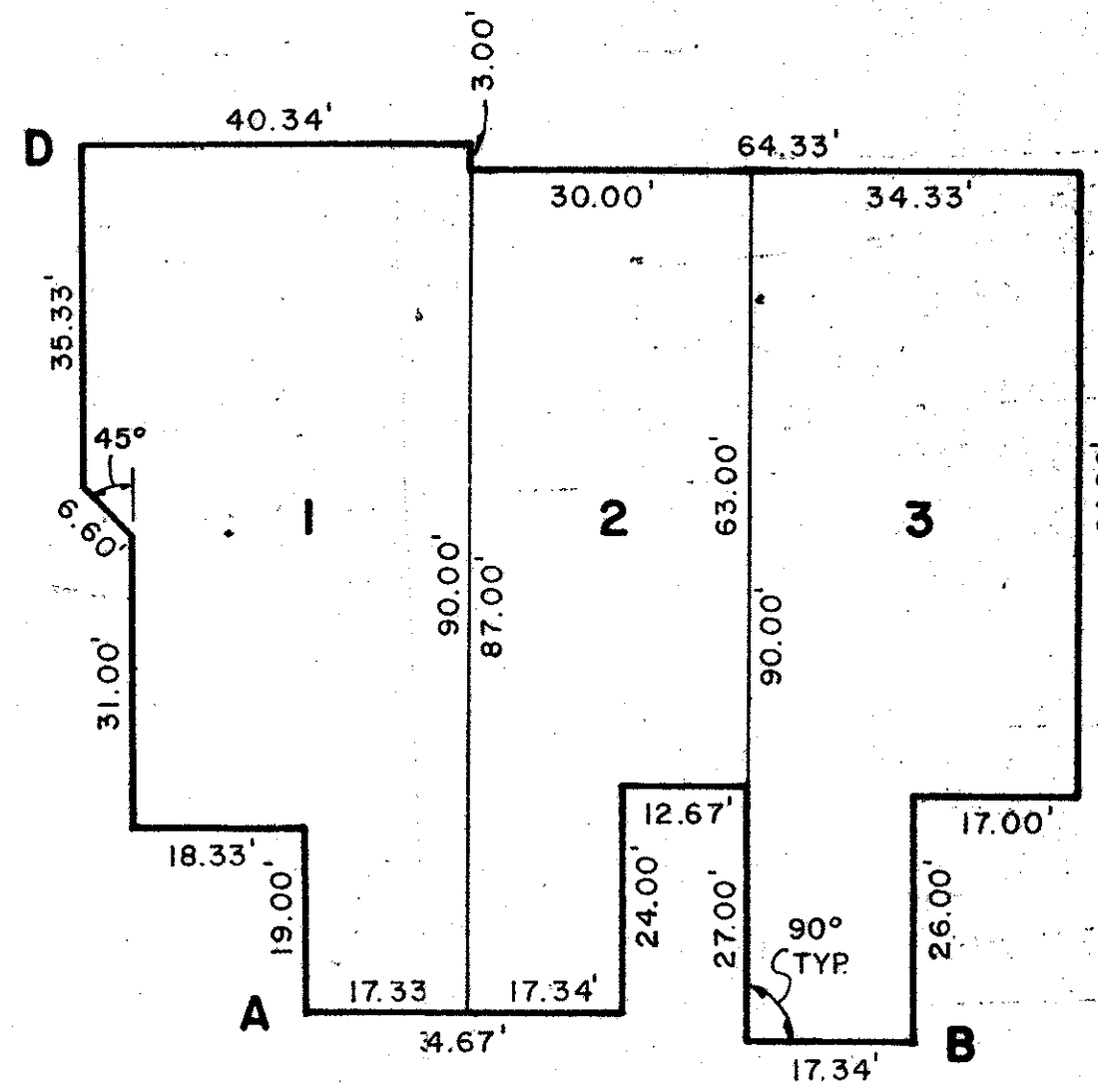
43/150

A PLANNED UNIT DEVELOPMENT IN COUNTRY CLUB TRAIL
PLAT NO. 6, CEDAR POINT
 IN THE NORTHEAST QUARTER (N.E. 1/4) OF SECTION 26, TWP. 45 SO., RGE. 42 EAST
 PALM BEACH COUNTY, FLORIDA
 BEING A REPLAT OF A PORTION OF THE SUBDIVISION OF SECTION 26 (P.B. 6, PG. 26)
 SHEET 3 OF 4

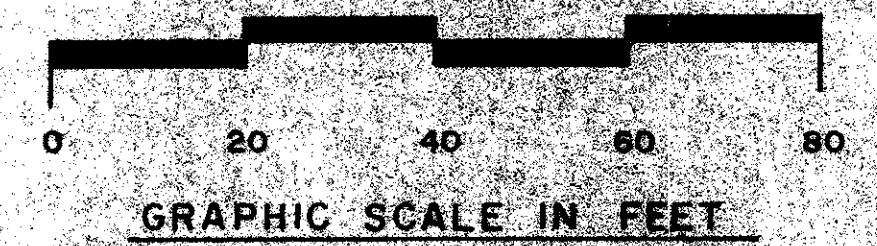
150



BLOCK 121

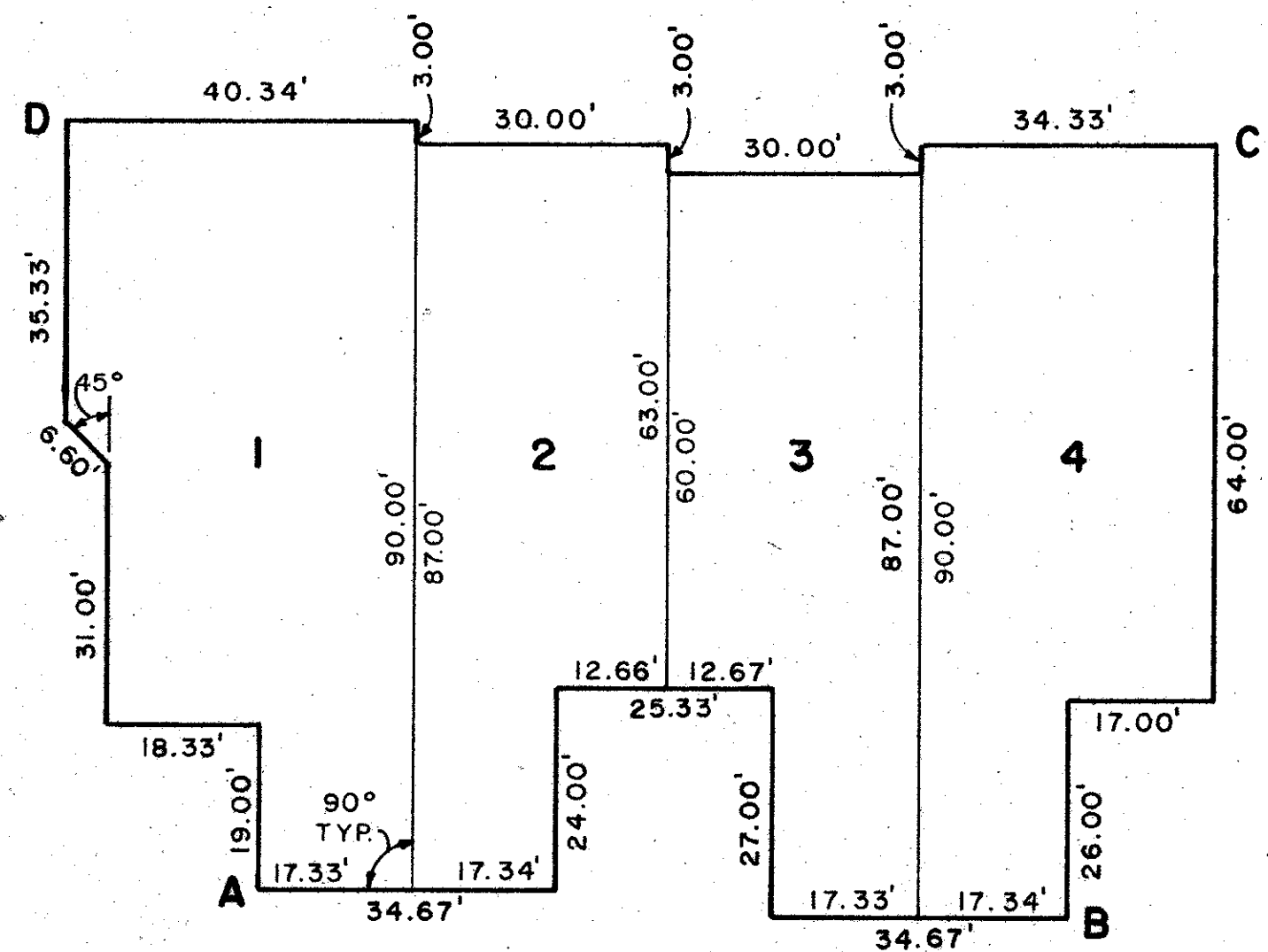


BLOCK 108

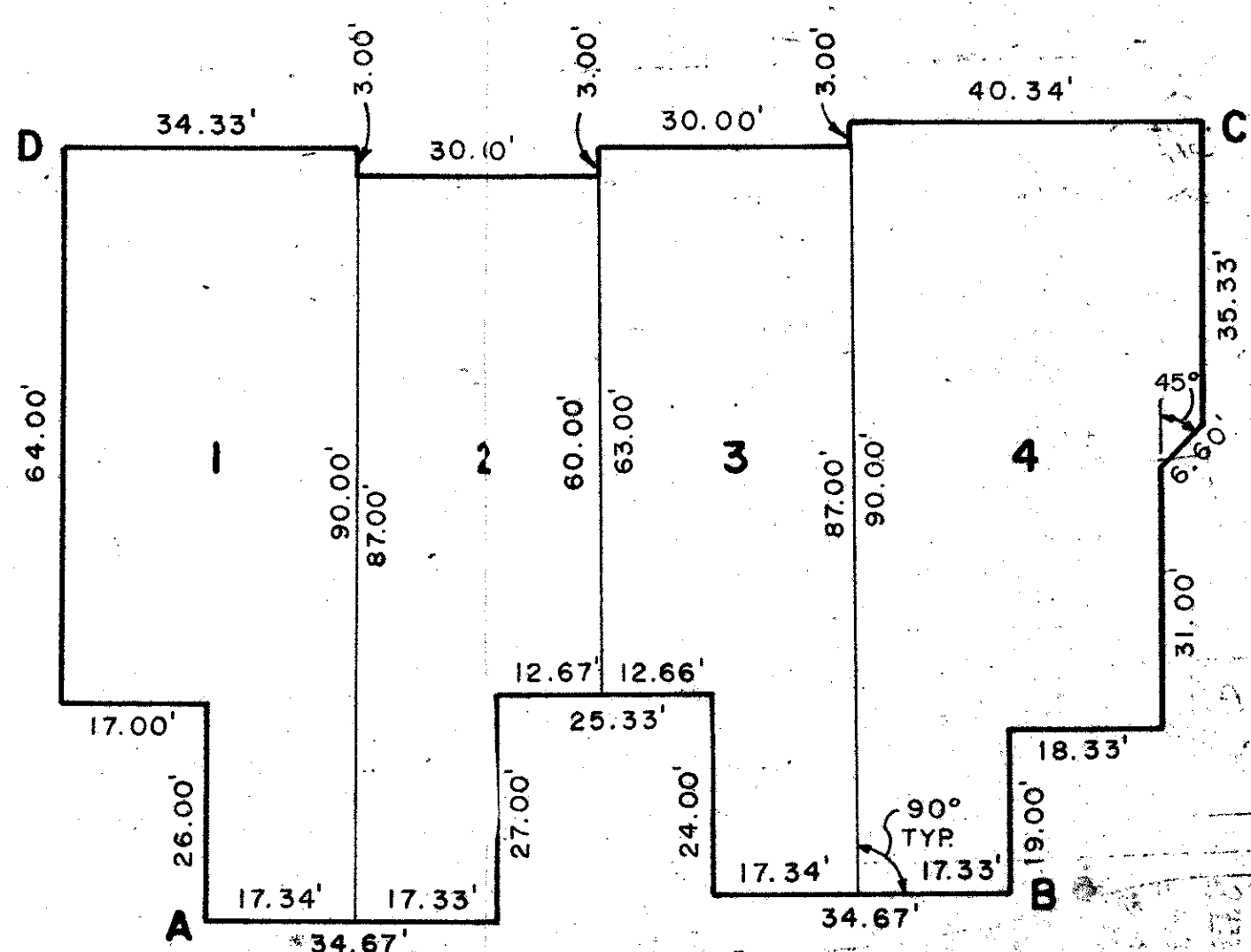


NOTE:

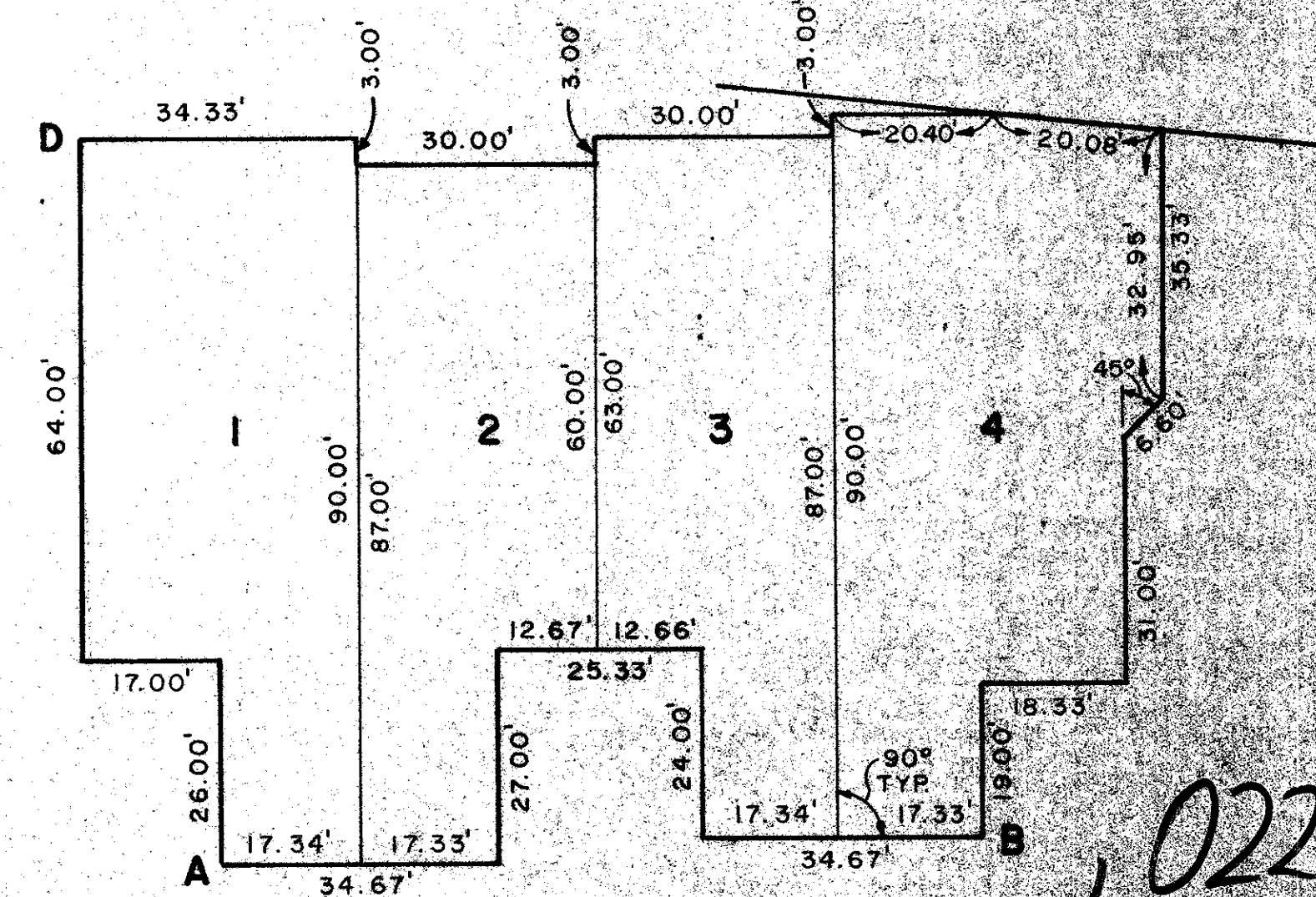
LETTERS A, B, C AND D REFER TO BLOCK CORNER COORDINATES, SEE SHEET 4.



BLOCKS 101, 102, 104, 106, 109, 110, 111, 112, 116, 120



BLOCKS 103, 105, 107, 113, 114, 115, 118, 119



BLOCK 117

0226-302
43/150

Field Book No. Pg.	ROBERT E. OWEN & ASSOCIATES, INC.	Job No. 81-028
Design	ENGINEERS · PLANNERS · SURVEYORS	Scale 1" = 20'
Drawn A. Field	WEST PALM BEACH FLORIDA	Date March, 1981
Checked P.T. Krick		Sheet 3 of 4
		File No. BF-2314-B

PLAT NO. 6
CEDAR POINT