

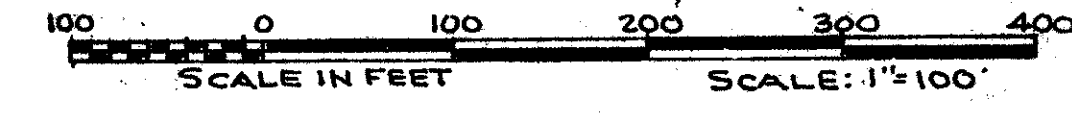
43/165

GOLFSIDE DRIVE - BOCA WEST - P.U.D.

IN PART OF SECTION 9, TWP. 47 S., RGE. 42 E.

PALM BEACH COUNTY, FLORIDA
IN 2 SHEETS SHEET NO. 2

GEE & JENSON
ENGINEERS - ARCHITECTS - PLANNERS, INC.
WEST PALM BEACH, FLORIDA
AUGUST 1981



165

STATE OF FLORIDA
COUNTY OF PALM BEACH
This Plat was filed for record on _____
this _____ day of _____, 1981,
and duly recorded in Plat Book No. _____
on page _____
JOHN B. DUNKLE, Clerk Circuit Court
By _____, O.C.



UNPLATTED

UNPLATTED

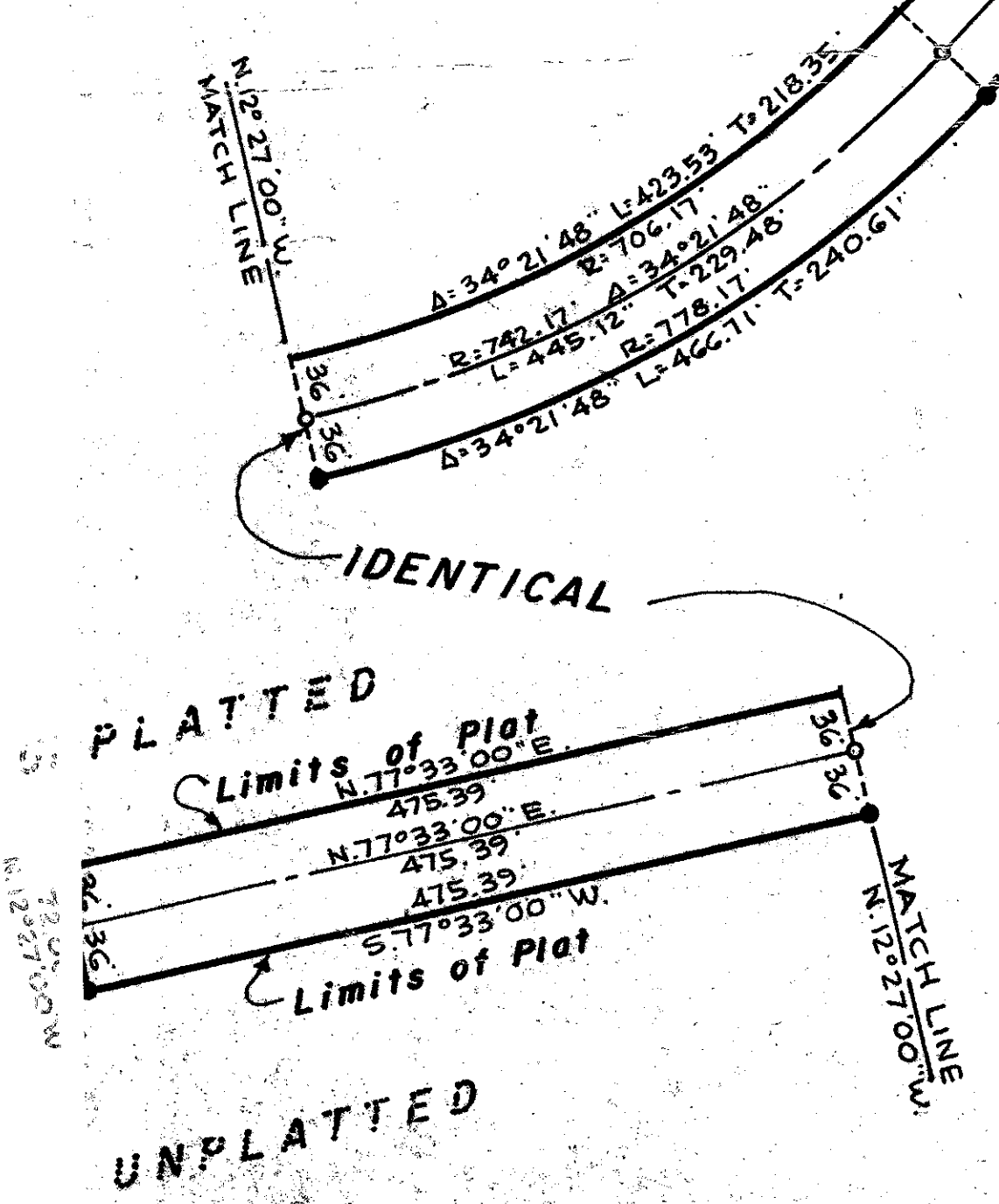
UNPLATTED

UNPLATTED

UNPLATTED

UNPLATTED

Golfside DR.
Boca West
43/165



NOTES

- denotes Permanent Reference Monument.
 - denotes Permanent Control Point.
- All bearings shown hereon are relative to an assumed meridian used throughout Boca West.

Boca West - Boca West Drive - P.U.D.
PB. 34 - PGS. 135 thru 138, Incl.
Sheet No. 4