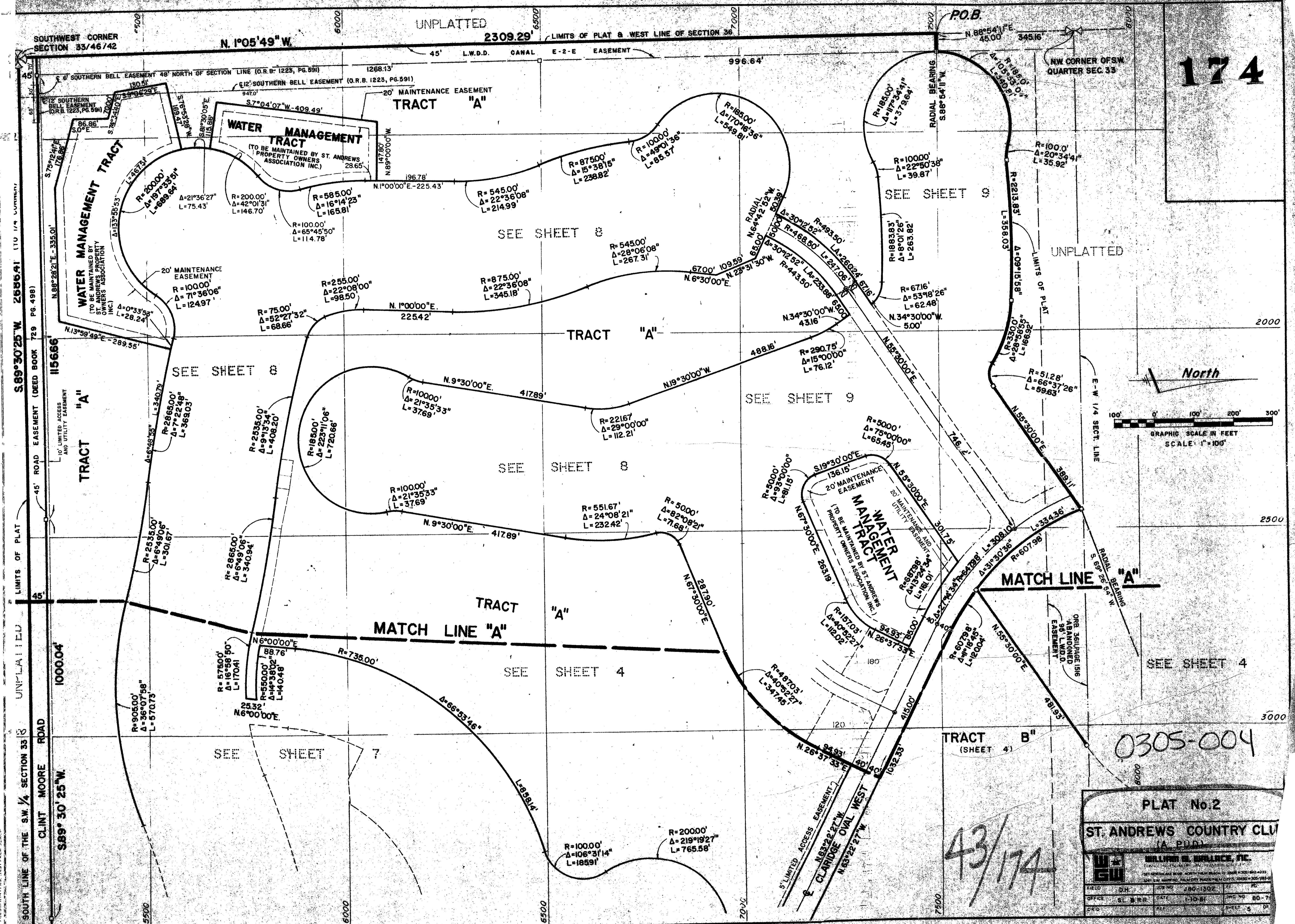


43/174

174



PLAT No. 2
ST. ANDREWS COUNTRY CLUB
 (A P.D.)

WILLIAM B. WALLACE, P.E.

FIELD	D.H.	DATE	1-10-81	NO. 80-7
OFFICE	CL. M.H.R.	DATE	1-10-81	NO. 80-7
CHKD.	REL.	DATE		SHEET 5 OF 7