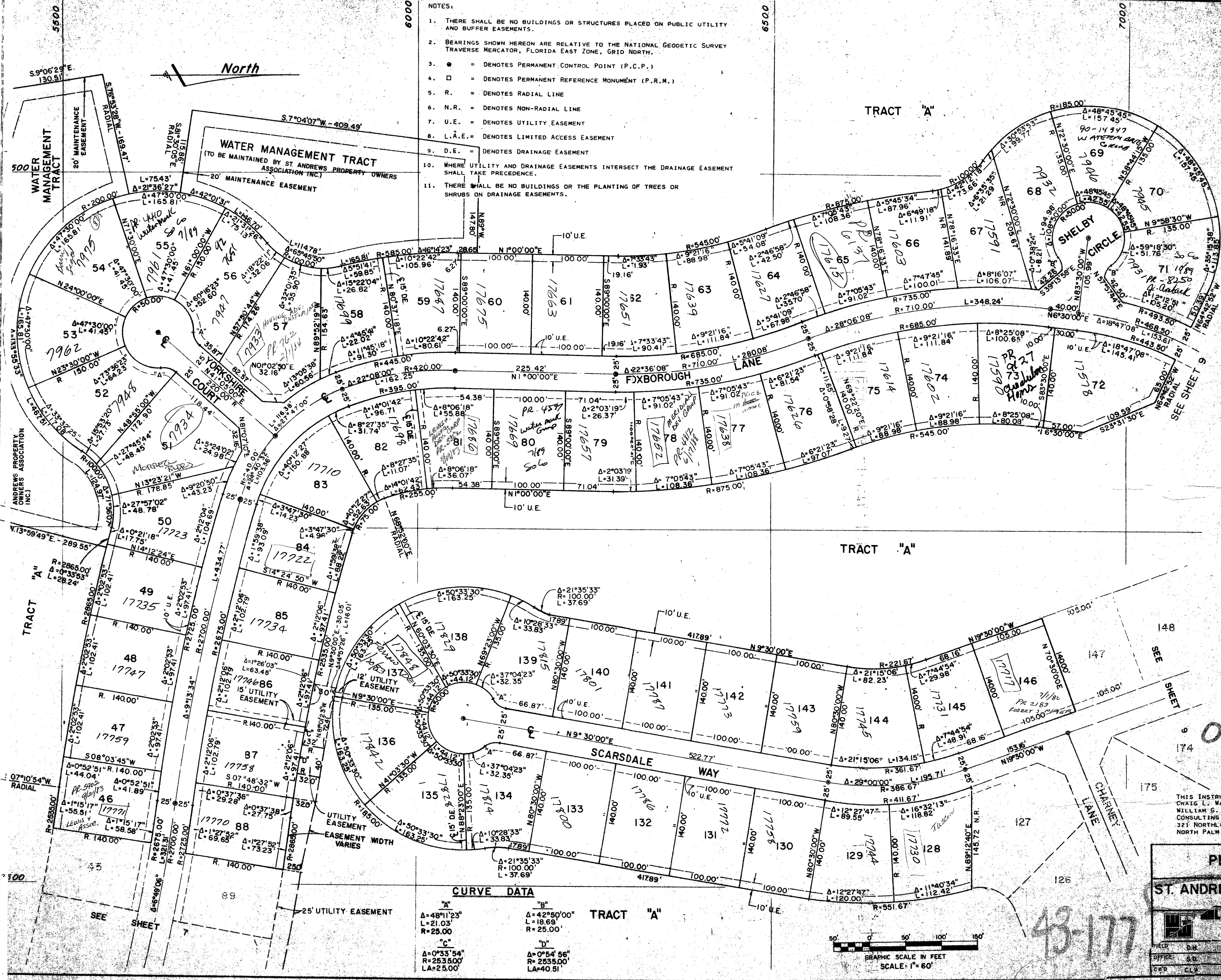


43/177

177

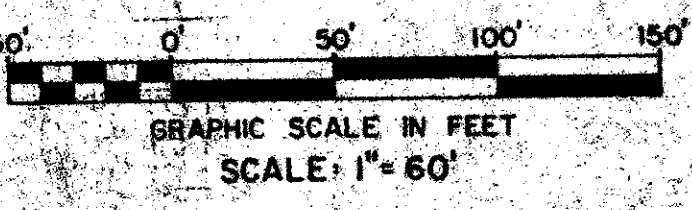
- NOTES:
1. THERE SHALL BE NO BUILDINGS OR STRUCTURES PLACED ON PUBLIC UTILITY AND BUFFER EASEMENTS.
 2. BEARINGS SHOWN HEREON ARE RELATIVE TO THE NATIONAL GEODETIC SURVEY TRAVERSE MERCATOR, FLORIDA EAST ZONE, GRID NORTH.
 3. ● = DENOTES PERMANENT CONTROL POINT (P.C.P.)
 4. □ = DENOTES PERMANENT REFERENCE MONUMENT (P.R.M.)
 5. R. = DENOTES RADIAL LINE
 6. N.R. = DENOTES NON-RADIAL LINE
 7. U.E. = DENOTES UTILITY EASEMENT
 8. L.A.E. = DENOTES LIMITED ACCESS EASEMENT
 9. D.E. = DENOTES DRAINAGE EASEMENT
 10. WHERE UTILITY AND DRAINAGE EASEMENTS INTERSECT THE DRAINAGE EASEMENT SHALL TAKE PRECEDENCE.
 11. THERE SHALL BE NO BUILDINGS OR THE PLANTING OF TREES OR SHRUBS ON DRAINAGE EASEMENTS.



CURVE DATA

"A"	"B"
Δ=48°11'25"	Δ=42°50'00"
L=21.03'	L=18.69'
R=25.00'	R=25.00'
"C"	"D"
Δ=0°33'54"	Δ=0°54'56"
R=2535.00'	R=2535.00'
LA=25.00'	LA=40.51'

TRACT "A"



0305-004

THIS INSTRUMENT PREPARED BY:
 CRAIG L. WALLACE
 WILLIAM S. WALLACE, INC.
 CONSULTING ENGINEERS AND LAND SURVEYORS
 321 NORTHLAKE BOULEVARD
 NORTH PALM BEACH, FLORIDA 33408

PLAT No. 2
ST. ANDREW'S COUNTRY CLUB
 (A P.U.D.)
WILLIAM S. WALLACE, INC.

FIELD	D.M.	JOB NO.	180-1802	FB	PR
OFFICE	S.D.	DATE	1-10-81	DWG NO.	80-789
CITY	CLY	REF.		SHEET	18 OF 19

43-177