

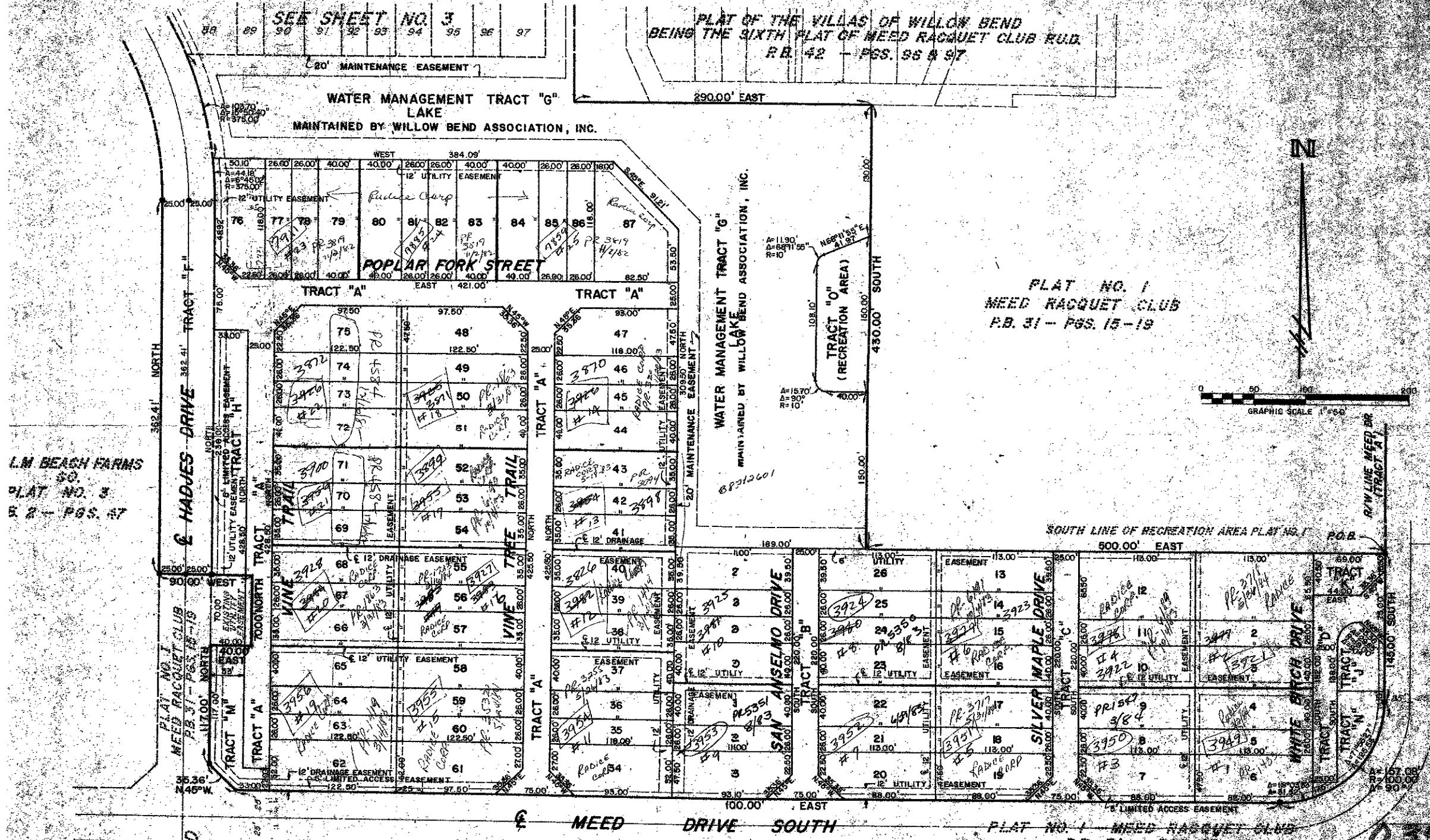
43/185

# THE VILLAS OF WILLOW BEND PLAT NO. 7

BEING THE SEVENTH PLAT OF MEED RACQUET CLUB P.U.D.  
SECTION 21, TOWNSHIP 34 SOUTH, RANGE 42 EAST  
PALM BEACH COUNTY, FLORIDA  
BEING, IN PART, A REPLAT OF A PART OF TRACTS 77, 78, 83, 84, 85, 106, 107, 108, AND 109  
PALM BEACH FARMS CO. PLAT NO. 3 PLAT BOOK 2 PAGE 47

185

STATE OF FLORIDA  
COUNTY OF PALM BEACH  
PLAT NO. 7  
THE VILLAS OF WILLOW BEND  
PLAT NO. 7  
JOHN S. DUNN, CIVIL ENGINEER  
BY



L.M. BEACH FARMS  
CO.  
PLAT NO. 3  
P.B. 2 - PGS. 47

PLAT NO. I  
MEED RACQUET CLUB  
P.B. 31 - PGS. 15-19

PLAT NO. II  
MEED RACQUET CLUB  
P.B. 32 - PGS. 151-152

PLAT NO. III  
MEED RACQUET CLUB  
P.B. 33 - PGS. 47 & 48

43/185

0396-305

ROSSI AND MALAVASI  
ENGINEERS AND ARCHITECTS  
WEST PALM BEACH, FLORIDA  
TELEPHONE 737-6146

THE VILLAS OF WILLOW BEND  
PLAT NO. 7  
IN 3 SHEETS SHEET NO. 1

THIS INSTRUMENT WAS PREPARED BY JOSEPH M. TUCKER IN THE  
OFFICE OF ROSSI AND MALAVASI ENGINEERS AND ARCHITECTS, INC., 1075  
BEACH LAKES BOULEVARD, WEST PALM BEACH, FLORIDA 33411  
TELEPHONE 737-6146