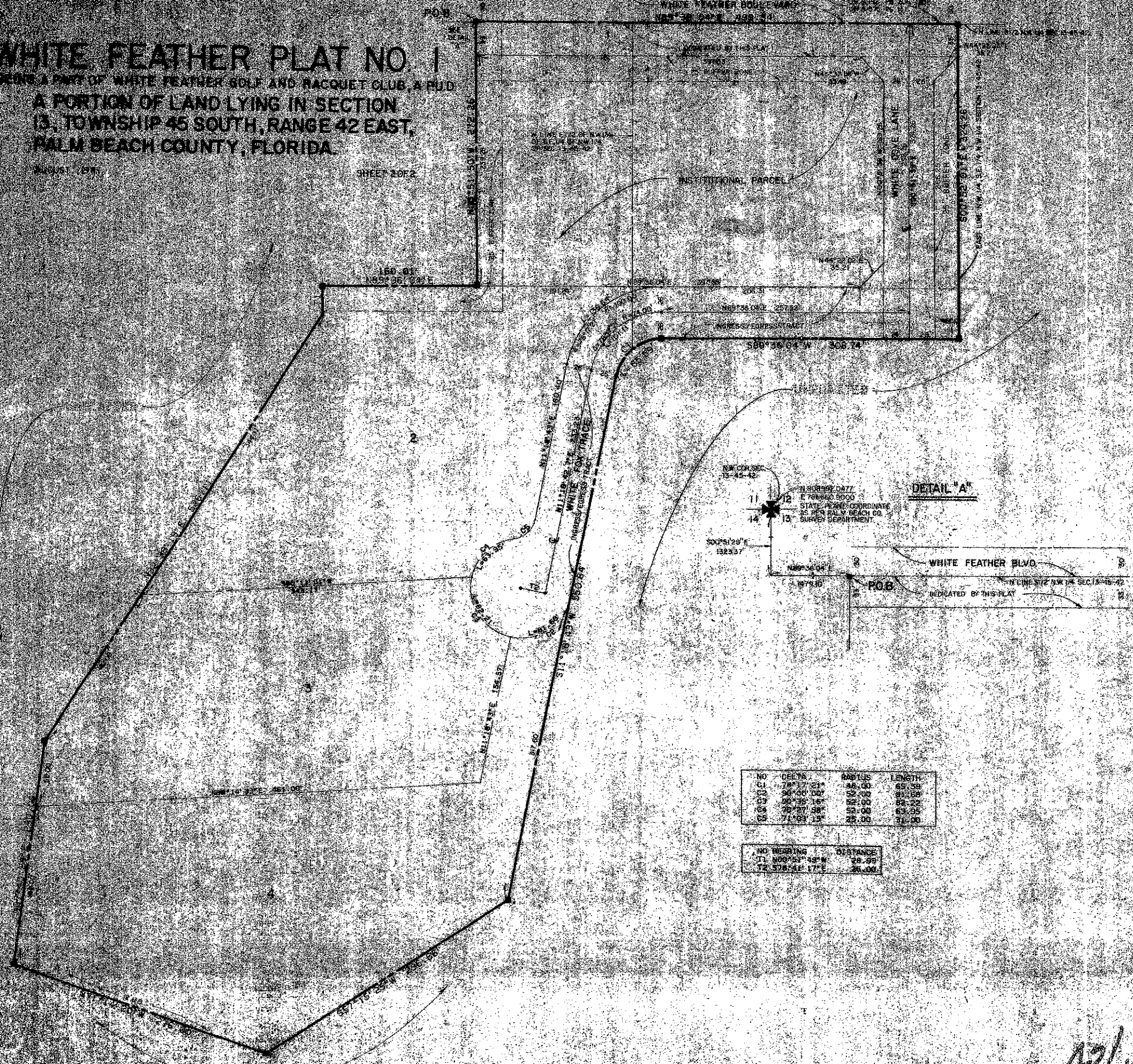


43/188

188

WHITE FEATHER PLAT NO. 1
 BEING A PART OF WHITE FEATHER GOLF AND HACQUET CLUB, A PUD
 A PORTION OF LAND LYING IN SECTION
 13, TOWNSHIP 45 SOUTH, RANGE 42 EAST,
 PALM BEACH COUNTY, FLORIDA.

AUGUST 1991 SHEET 2 OF 2



DETAIL "A"

NO.	DECTA	RADIUS	LENGTH
C1	72°27'32"	44.00	65.39
C2	56°00'00"	52.00	89.10
C3	50°30'36"	52.00	86.22
C4	70°27'38"	52.00	63.95
C5	71°03'15"	25.00	31.00

NO.	BEARING	DISTANCE
T1	N89°53'49"W	28.89
T2	S78°41'17"E	26.00

P.U.D. DATA	
TOTAL INCREASE	10.9 AC
TOTAL DWELLING UNITS	73
DENSITY	0.100/A
OPEN SPACE	93 AC

0340-300

43/188

Meridian
 Surveying and Mapping, Inc.
 WEST PALM BEACH, FLORIDA

DATE: 8/1/91
 DRAWN BY: J.S.
 CHECKED BY: J.S.

WHITE FEATHER
 PLAT NO. 1