

43/191

BOUNDARY PLAT OF WHISPER WALK A P.U.D.

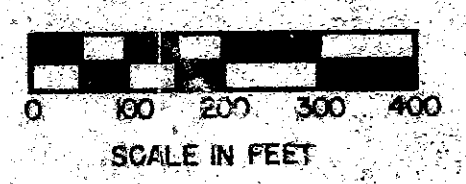
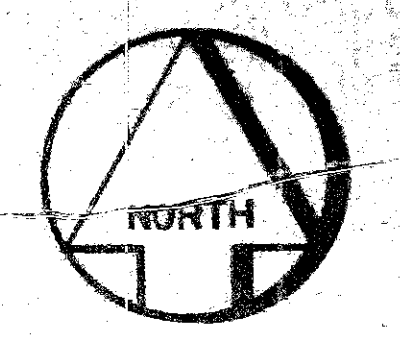
SITUATE IN SECTIONS 6, 6 AND 8, TOWNSHIP 47S, RANGE 42 E;
BEING A RE-PLAT OF A PORTION OF TRACTS 61 THROUGH 120 INCLUSIVE,
OF BLOCK 72, AND TRACT 97, BLOCK 73 OF THE PALM BEACH FARMS
COMPANY PLAT NO. 3, AS RECORDED IN PLAT BOOK 2 ON PAGES 43
THROUGH 54 OF THE PUBLIC RECORDS OF PALM BEACH COUNTY, FLORIDA.

JULY, 1981

SHEET 3 OF 3

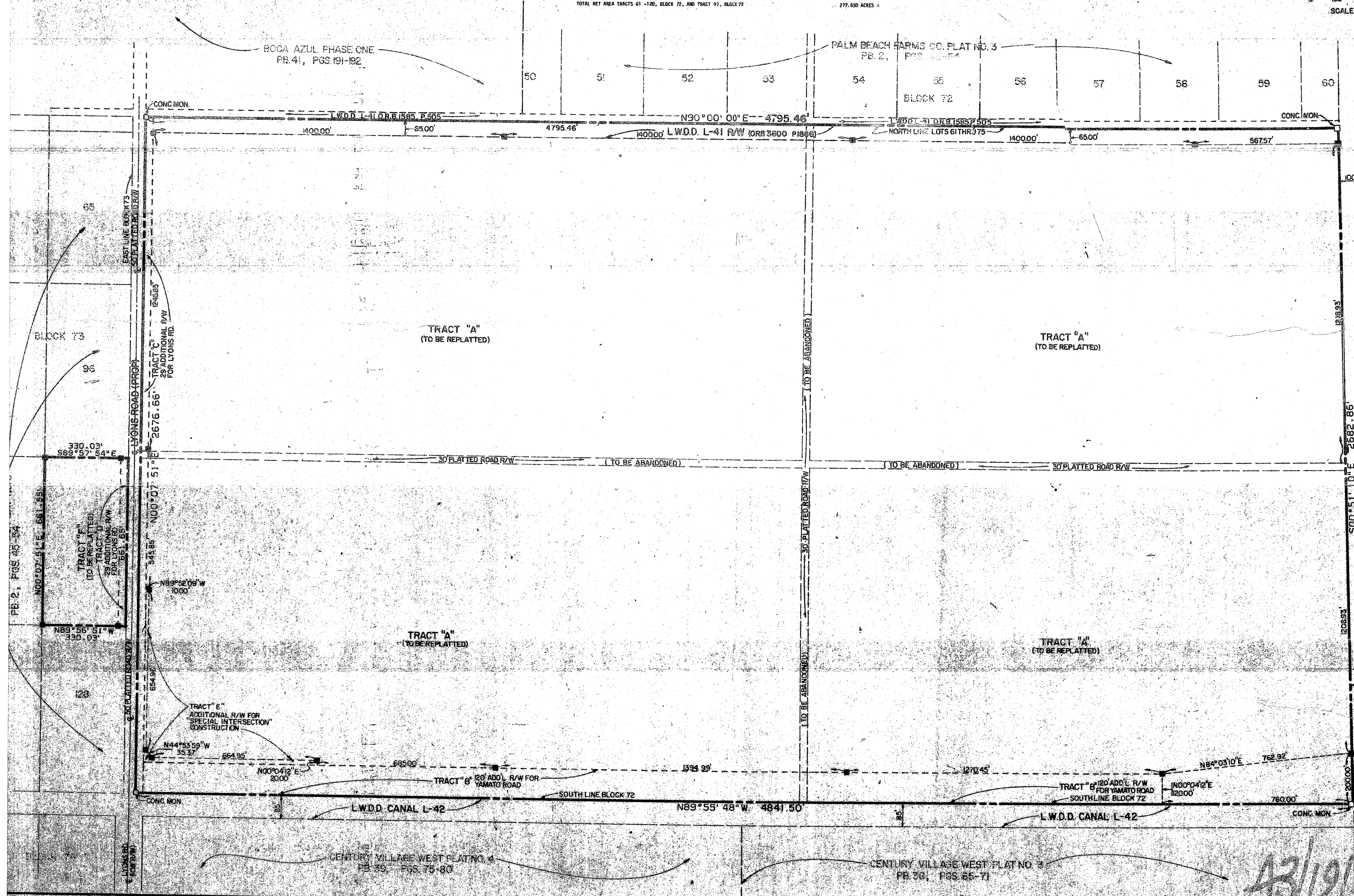
191

STATE OF FLORIDA
COUNTY OF PALM BEACH
THIS PLAT WAS FILED FOR
RECORD AT _____ DAY OF _____
AD. 1981 AND DULY RECORDED
IN PLAT BOOK _____ ON PAGES
_____ AND _____
JOHN B. DUNKLE, CLERK
CIRCUIT COURT
BY: _____ DC.



ACREAGE SUMMARY

TRACTS 61 - 120, BLOCK 72 (INCLUDING 30' PLATTED ROAD RESERVATIONS)	284.65 ACRES (GROSS)
AREA OF 30' PLATTED ROAD RESERVATIONS (WITHIN TRACTS 61 - 120)	5.143 ACRES
LESS ADDITIONAL RIGHT-OF-WAY FOR YAMATO ROAD - TRACT "B"	14.327 ACRES
LESS ADDITIONAL RIGHT-OF-WAY FOR LYONS ROAD - TRACT "C"	1.702 ACRES
LESS ADDITIONAL RIGHT-OF-WAY FOR "SPECIAL INTERSECTION" - TRACT "E"	0.435 ACRES
LESS REQUIRED RIGHT-OF-WAY FOR L.W.D.C. L-14	7.113 ACRES
TOTAL NET AREA TRACTS 61 - 120, BLOCK 72	273.077 ACRES
TRACT 97, BLOCK 73	5.013 ACRES
LESS ADDITIONAL RIGHT-OF-WAY FOR LYONS ROAD - TRACT "D"	0.440 ACRES
TOTAL NET AREA TRACT 97, BLOCK 73	4.573 ACRES
TOTAL NET AREA TRACTS 61 - 120, BLOCK 72, AND TRACT 97, BLOCK 73	277.650 ACRES



0339-000

43/191

Meridian
Surveying and Mapping
2320 So. Congress Ave.
Suite 2-3
West Palm Beach, Florida
WHISPER WALK A P.U.D.