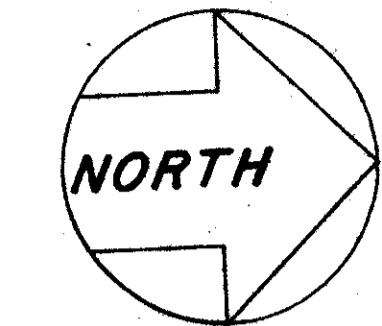


44/31

PLAT OF SELBERG PROPERTIES

PALM BEACH COUNTY, FLORIDA
SHEET 2 OF 2 AUGUST, 1981

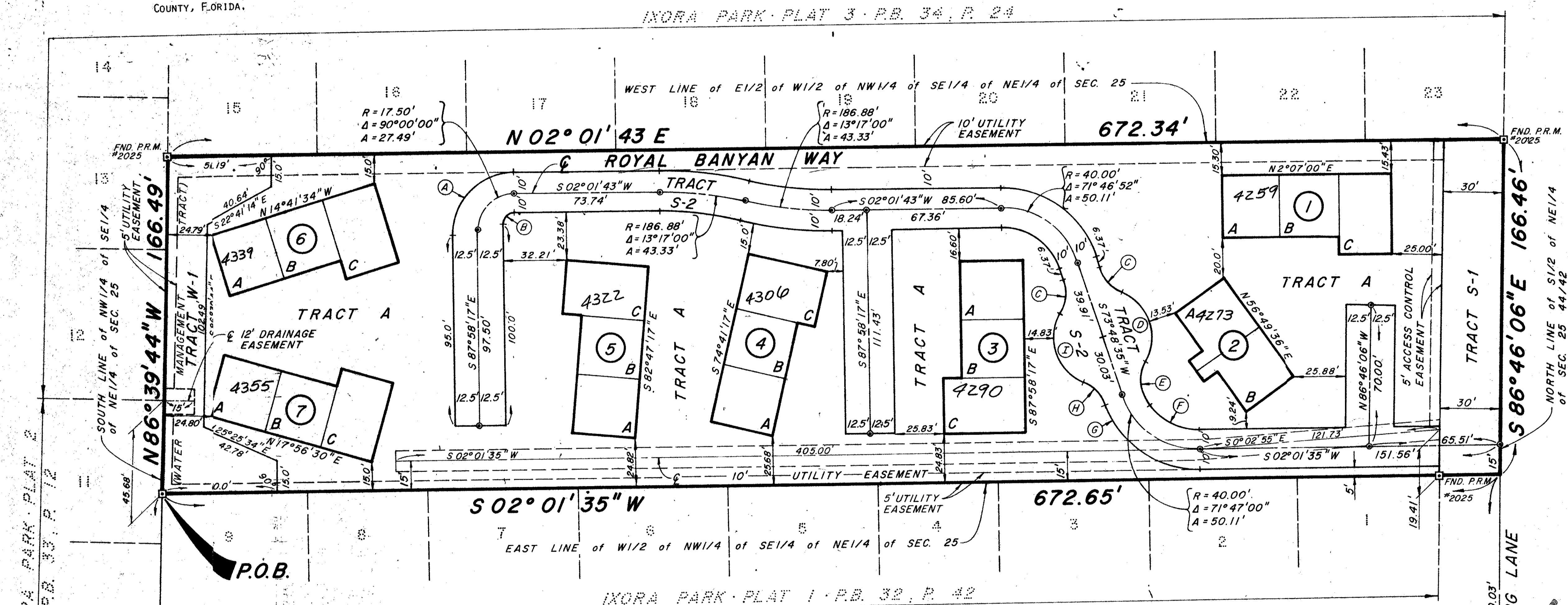


31

STATE OF FLORIDA
COUNTY OF PALM BEACH
This Plat was filed for record at _____
M. this _____ day of _____ 19____
and duly recorded in Plat Book No. _____
on Page _____
John B. Dunkle, Clerk Circuit Court.
By _____ D.C.

- NOTES:
1. THERE SHALL BE NO TREES, SHRUBS OR STRUCTURES BUILT OR PLACED ON UTILITY AND OR DRAINAGE EASEMENTS.
 2. BUILDING SETBACK LINES SHALL BE AS REQUIRED BY PALM BEACH COUNTY ZONING REGULATIONS.
 3. EASEMENTS ARE FOR PUBLIC UTILITIES UNLESS OTHERWISE INDICATED.
 4. PERMANENT REFERENCE MONUMENTS ARE SHOWN THUS:
 - PERMANENT CONTROL POINTS ARE SHOWN THUS:
 5. BEARING REFERENCE: BEARINGS SHOWN ON THIS PLAT ARE IN THE MERIDIAN OF THE IXORA PARK PLAT NO. 1, AS RECORDED IN PLAT BOOK 32, PAGE 42 IN THE PUBLIC RECORDS OF PALM BEACH COUNTY, FLORIDA.

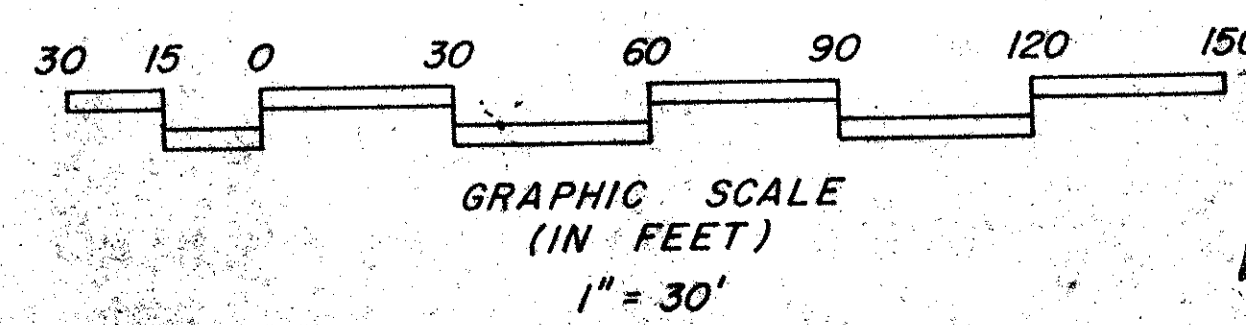
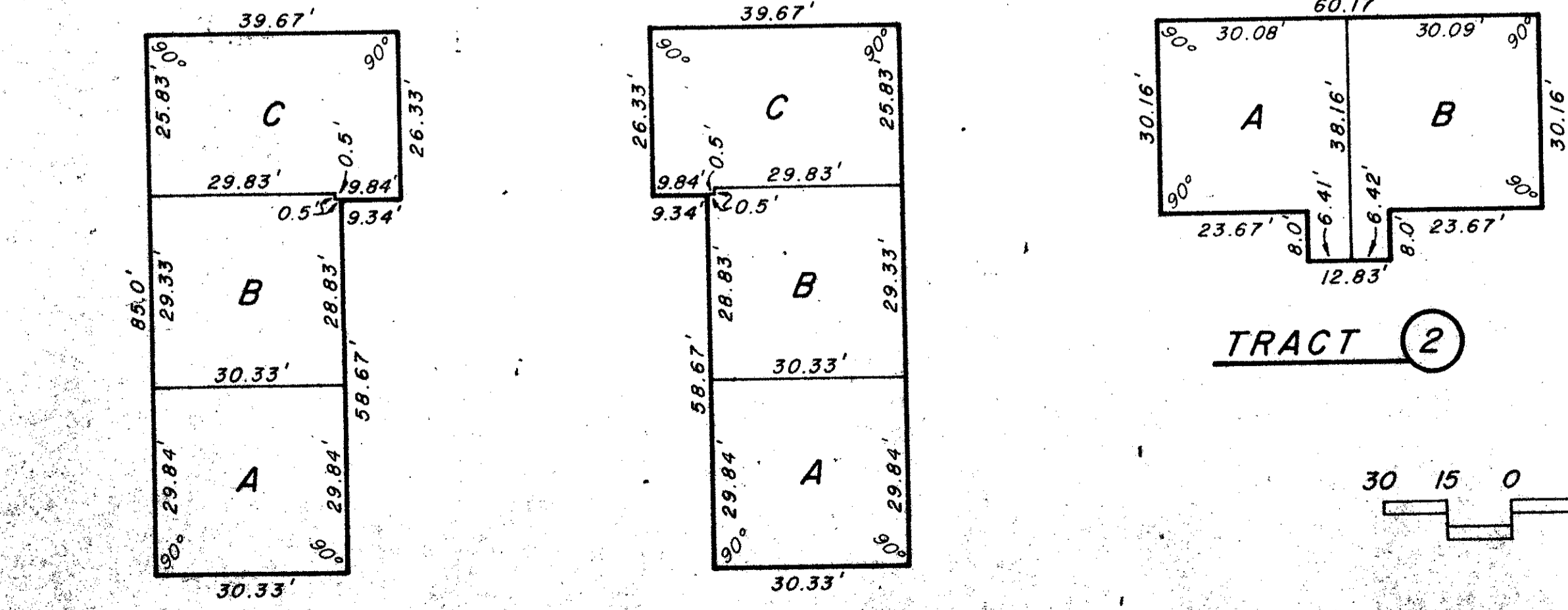
CURVE DATA			
CURVE	RADIUS	DELTA	ARC LENGTH
(A)	30.00'	90°00'00"	47.12'
(B)	5.00'	90°00'00"	7.85'
(C)	20.00'	48°11'23"	16.82'
(D)	25.00'	95°32'40"	41.69'
(E)	20.00'	65°13'29"	22.77'
(F)	30.00'	53°54'48"	28.23'
(G)	50.00'	68°50'24"	60.07'
(H)	20.00'	45°24'33"	15.85'
(I)	25.00'	96°32'32"	42.12'



NOT PLATTED

1000-028

N 2° 00' 45" E 674.50'
E. LINE OF SECTION 25,
TOWNSHIP 44 SOUTH, RANGE 42 EAST



SELBERG PROPERTIES
AA/31

MBSA

MICHAEL B. SCHORAH & ASSOCIATES, INC.
ENGINEERS
PLANNERS
DEVELOPMENT CONSULTANTS
1850 FOREST HILL BLVD.
SUITE 205
WEST PALM BEACH,
FLORIDA 33406
PHONE: (305) 968-0888