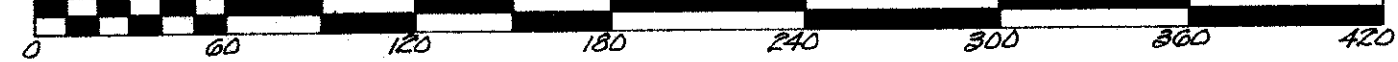


PART OF A P.U.D.

THE SONGS SEC. 1

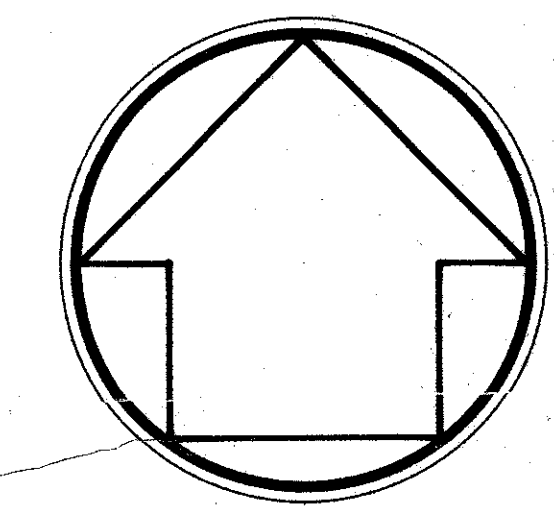
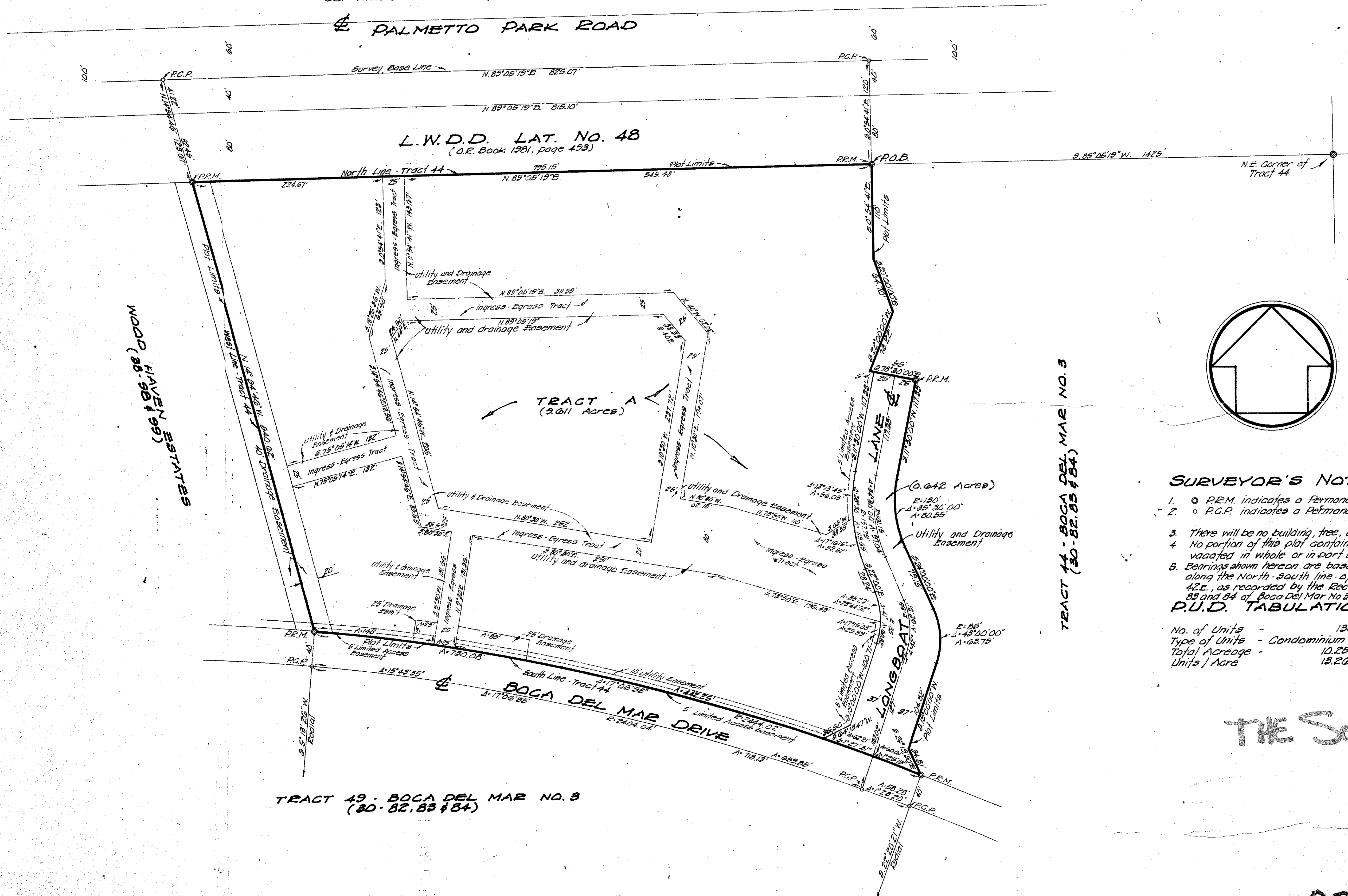
42

A REPLAT OF A PORTION OF TRACT 44, BOGA DEL MAR NO 3 (30-82, 83 AND 84), IN SECTION 27, TOWNSHIP 47 SOUTH, RANGE 42 EAST, PALM BEACH COUNTY, FLORIDA.

Date: May 19th, 1981
F.B.  Scale: 1" = 60'
O.N. 34011

Prepared by: DONALD W. MCINTOSH ASSOCIATES, INC.
581 N.E. 91st STREET, MIAMI SHORES, FLORIDA 33138

44/42



SURVEYOR'S NOTES:

1. P.R.M. indicates a Permanent Reference Monument.
2. P.C.P. indicates a Permanent Control Point.
3. There will be no building, tree, or shrub placed on easements.
4. No portion of this plat containing open spaces may be vacated in whole or in part unless the entire plot is vacated.
5. Bearings shown hereon are based on bearing S. 0° 58' 31" E. along the North-South line of Section 27, Twp 47 S. Rge. 42 E., as recorded by the Record Plat Book 80, of page 82, 83 and 84 of Boga Del Mar No. 3, Palm Beach County, Fla.

P.U.D. TABULATION:

No. of Units	136
Type of Units	Condominium Apartments
Total Acreage	10.253 acres - 446,621 sq. ft.
Units / Acre	13.264

TRACT 44 - BOGA DEL MAR NO. 3 (30-82, 83 & 84)

TRACT 49 - BOGA DEL MAR NO. 3 (30-82, 83 & 84)

THE SONGS SEC. 1

44/42

0205-322

This instrument was prepared by:
DONALD W. MCINTOSH ASSOCIATES, INC.
581 N.E. 91st STREET, MIAMI SHORES, FLA.