


44/52

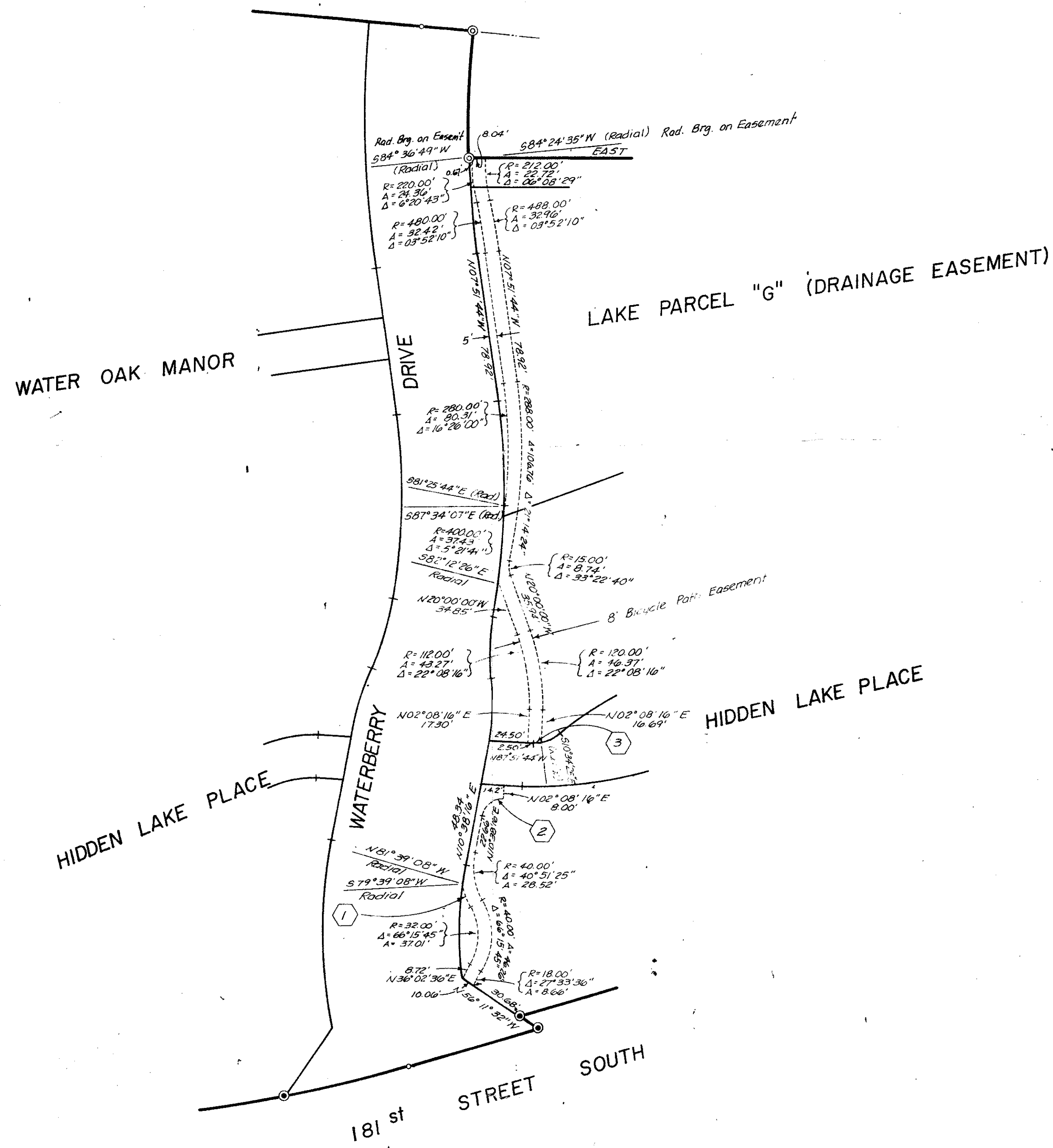
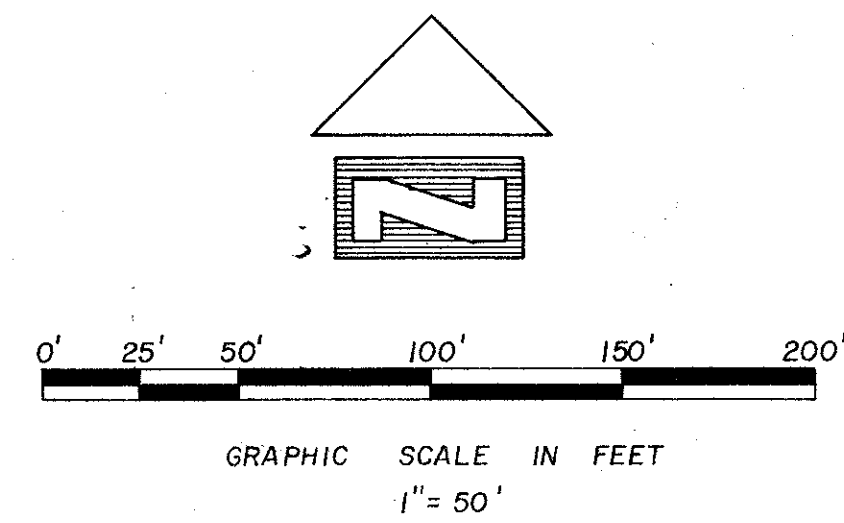
WATERBERRY SECTION ONE

(A PORTION OF RIVIERA P.U.D.)
A REPLAT OF A PORTION OF TRACTS 29, 30 and 31
FLORIDA FRUIT LANDS COMPANY'S SUBDIVISION No. 2 OF
SECTION 1, TOWNSHIP 47 S., RANGE 41 E. (1-102 P.B.C.R.)
AND A PORTION OF THE N.E. 1/4 OF SECTION 2, TOWNSHIP 47 S., RANGE 41 E.
PALM BEACH COUNTY, FLORIDA

52

PREPARED BY
 **HELLER - WEAVER and ASSOCIATES, Inc.**
5310 North State Road 7, Suite E
Fort Lauderdale, Florida 33319
ORDER No. 2212

SHEET 3 OF 3 SHEETS



8' BICYCLE PATH EASEMENT
DETAIL

0303-303

CURVE TABLE

No.	Radius	Delta	Arc
1.	48.00'	19° 52' 17"	16.65'
2.	12.00'	81° 30' 00"	17.07'
3.	25.00'	12° 42' 41"	5.55'

WATERBERRY SEC. 1
44/52