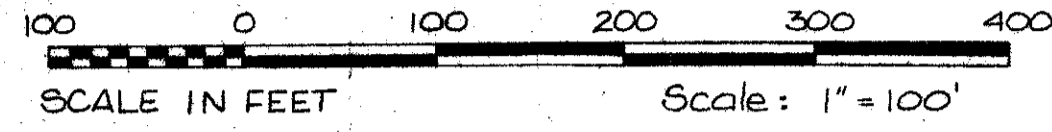


44/60

TRACT 39 - WELLINGTON - P.U.D.

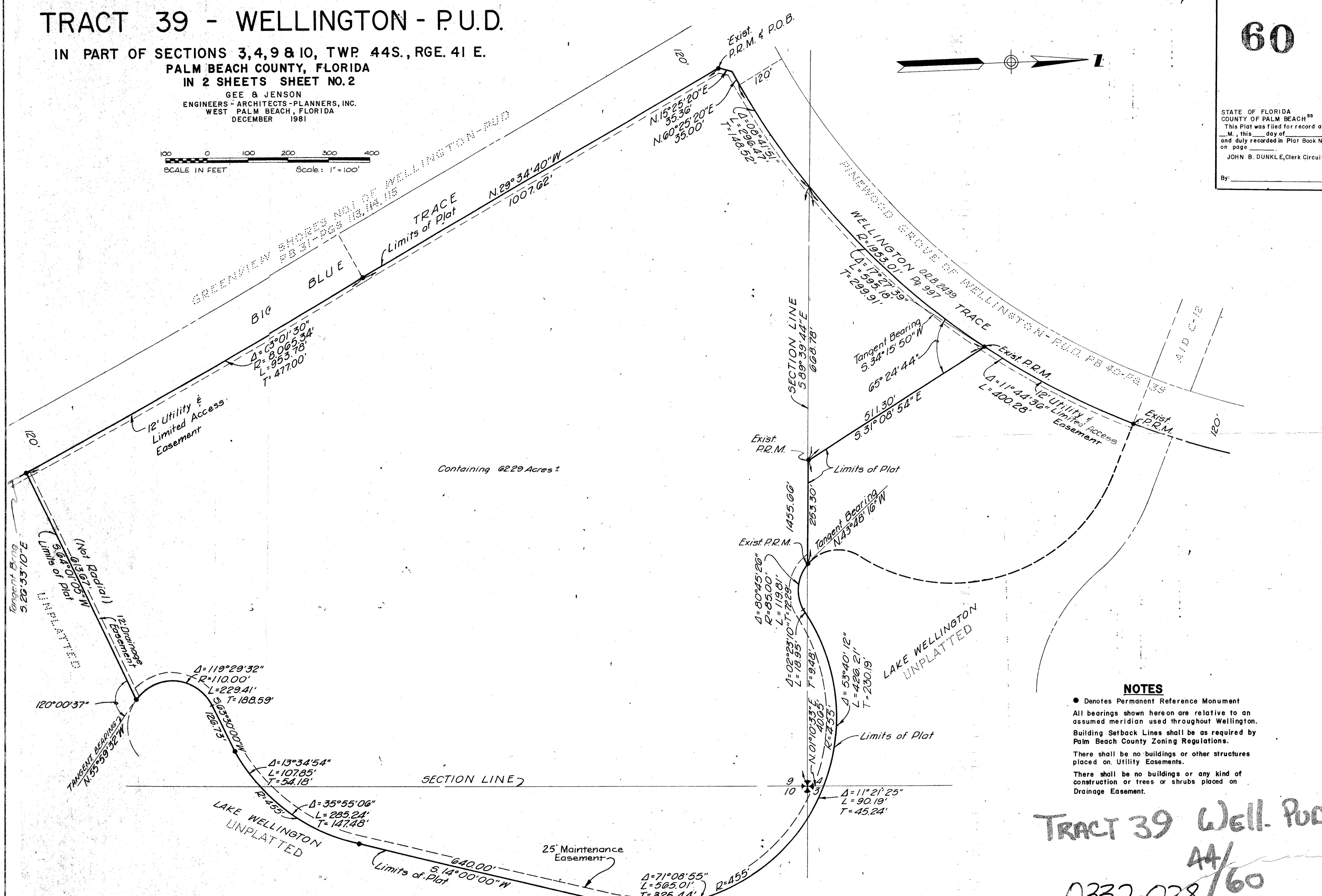
IN PART OF SECTIONS 3, 4, 9 & 10, TWP. 44S., RGE. 41 E.
PALM BEACH COUNTY, FLORIDA
IN 2 SHEETS SHEET NO. 2

GEE & JENSON
ENGINEERS - ARCHITECTS - PLANNERS, INC.
WEST PALM BEACH, FLORIDA
DECEMBER 1981



60

STATE OF FLORIDA
COUNTY OF PALM BEACH
This Plat was filed for record at
M., this day of 1982
and duly recorded in Plat Book No.
on page
JOHN B. DUNKLE, Clerk Circuit Court
By: D.C.



NOTES

- Denotes Permanent Reference Monument
- All bearings shown hereon are relative to an assumed meridian used throughout Wellington.
- Building Setback Lines shall be as required by Palm Beach County Zoning Regulations.
- There shall be no buildings or other structures placed on Utility Easements.
- There shall be no buildings or any kind of construction or trees or shrubs placed on Drainage Easement.

TRACT 39 Well. PUD.
44/60
0332-028/60