

16/44

POINCIANA PLACE PHASE III C

A P.U.D.

A PARCEL OF LAND SITUATE IN SECTIONS 21 AND 22, TOWNSHIP 44 SOUTH, RANGE 42 EAST, PALM BEACH COUNTY, FLORIDA, BEING A REPLAT OF A PORTION OF BLOCK 22 "PALM BEACH FARMS COMPANY PLAT NO. 3" ACCORDING TO THE PLAT THEREOF AS RECORDED IN PLAT BOOK 2, AT PAGE 47 OF THE PUBLIC RECORDS OF PALM BEACH COUNTY, FLORIDA.

JANUARY, 1982

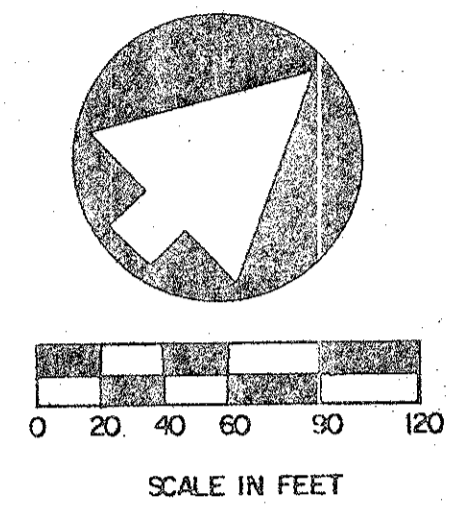
SHEET 2 OF 2

91

STATE OF FLORIDA
COUNTY OF PALM BEACH
THIS PLAT WAS FILED FOR
RECORD AT
THIS DAY OF
A.D. 1982 AND DULY RECORDED
IN PLAT BOOK ON PAGES
AND
JOHN B. DUNKLE, CLERK
CIRCUIT COURT
BY: DC.

P.U.D. DATA

| | |
|---------------------------------|-------------|
| TOTAL AREA THIS PLAT | 16.9 AC. |
| LESS INGRESS/EGRESS TRACTS | 5.8 AC. |
| EFFECTIVE BASE RESIDENTIAL AREA | 11.1 AC. |
| TOTAL UNITS | 448 AC. |
| OPEN SPACE | 7.2 AC. |
| DENSITY | 26.5 DU/AC. |

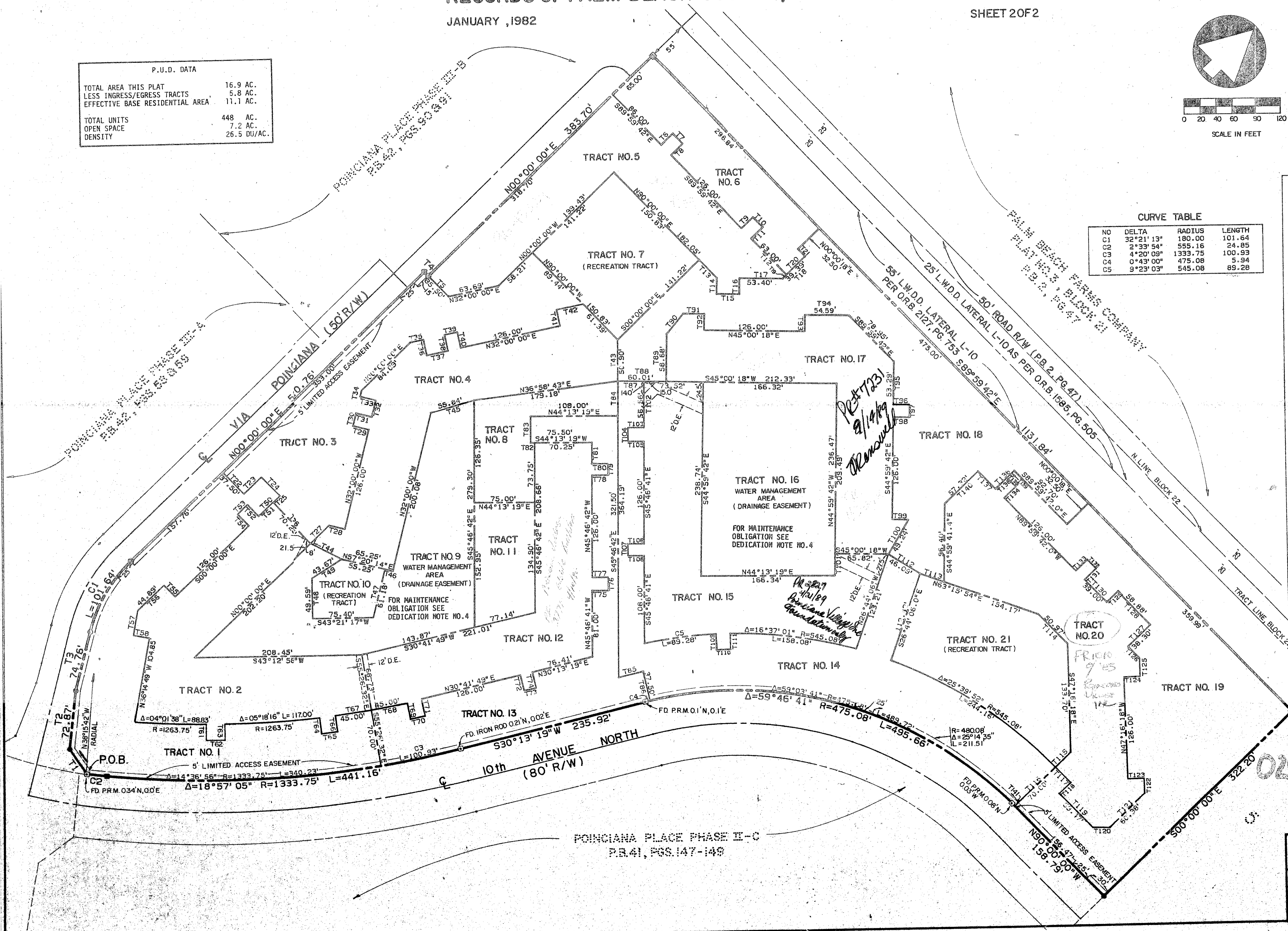


CURVE TABLE

| NO | DELTA | RADIUS | LENGTH |
|----|-----------|---------|--------|
| C1 | 32°21'13" | 180.00 | 101.64 |
| C2 | 2°33'54" | 555.16 | 24.85 |
| C3 | 4°23'03" | 1333.75 | 100.93 |
| C4 | 0°43'00" | 475.08 | 5.94 |
| C5 | 9°23'03" | 545.08 | 89.28 |

"T" TABLE

| NO | BEARING | DISTANCE | NO | BEARING | DISTANCE |
|-----|-------------|----------|------|-------------|----------|
| T1 | N80°18'28"W | 37.13 | T59 | S36°14'49"E | 18.00 |
| T2 | N40°14'29"W | 72.87 | T60 | S53°45'11"W | 20.00 |
| T3 | N32°21'13"W | 74.76 | T61 | N46°08'58"W | 20.00 |
| T4 | N90°00'00"E | 7.50 | T62 | S43°19'45"W | 23.36 |
| T5 | N90°00'00"E | 35.50 | T63 | S47°11'32"E | 20.00 |
| T6 | N00°00'18"E | 20.00 | T64 | S52°29'48"E | 20.00 |
| T7 | S89°59'42"E | 17.42 | T65 | N37°03'02"E | 20.28 |
| T8 | S00°00'18"W | 20.00 | T66 | N53°24'08"W | 20.00 |
| T9 | N00°00'18"E | 20.00 | T67 | N35°24'40"E | 45.00 |
| T10 | S89°59'42"E | 17.23 | T68 | N33°32'15"E | 45.00 |
| T11 | S00°00'18"W | 20.00 | T69 | S57°28'57"E | 20.00 |
| T12 | S89°59'42"E | 63.00 | T70 | N32°06'01"E | 18.69 |
| T13 | N90°00'00"E | 31.22 | T71 | N58°13'00"W | 21.00 |
| T14 | S44°59'42"E | 20.00 | T72 | S59°18'11"E | 20.00 |
| T15 | N45°00'18"E | 28.11 | T73 | N31°33'12"E | 15.50 |
| T16 | N44°59'42"W | 20.00 | T74 | N59°48'41"W | 20.00 |
| T17 | N45°00'18"E | 53.40 | T75 | N44°13'19"E | 20.00 |
| T18 | N00°00'18"E | 39.39 | T76 | N45°46'41"W | 16.24 |
| T19 | N00°00'18"E | 6.89 | T77 | S44°13'19"E | 20.00 |
| T20 | N00°00'18"E | 32.50 | T78 | N44°13'19"E | 20.00 |
| T21 | N89°59'42"W | 12.92 | T79 | N45°46'42"W | 14.37 |
| T22 | N90°00'00"E | 37.50 | T80 | S44°13'19"E | 20.00 |
| T23 | N00°00'00"E | 30.11 | T81 | N45°46'41"W | 26.00 |
| T24 | N90°00'00"E | 32.50 | T82 | S44°13'19"E | 5.25 |
| T25 | S00°00'00"E | 11.74 | T83 | N45°46'41"W | 32.50 |
| T26 | N90°00'00"E | 70.25 | T84 | N45°46'41"W | 42.69 |
| T27 | N00°24'00"E | 32.03 | T85 | N30°17'42"E | 31.41 |
| T28 | N58°00'00"E | 20.00 | T86 | S59°03'41"E | 37.50 |
| T29 | S58°00'00"W | 20.00 | T87 | N45°00'18"E | 32.50 |
| T30 | N32°00'00"W | 16.00 | T88 | N45°00'18"E | 60.01 |
| T31 | N58°00'00"E | 20.00 | T89 | N44°59'42"W | 58.69 |
| T32 | N32°00'00"E | 21.00 | T90 | N05°00'02"W | 32.15 |
| T33 | S58°00'00"W | 20.00 | T91 | N45°00'18"E | 25.95 |
| T34 | N32°00'00"E | 20.00 | T92 | S44°59'42"E | 20.00 |
| T35 | N31°59'59"E | 16.87 | T93 | N44°59'42"W | 20.00 |
| T36 | S58°00'00"E | 20.00 | T94 | N45°00'18"E | 54.59 |
| T37 | N32°00'00"E | 27.00 | T95 | S44°59'42"E | 53.29 |
| T38 | N58°00'00"W | 20.00 | T96 | N45°00'18"E | 20.00 |
| T39 | N32°00'00"E | 15.00 | T97 | S44°59'41"E | 15.28 |
| T40 | S58°00'00"E | 20.00 | T98 | S45°00'18"W | 20.00 |
| T41 | N58°00'00"W | 20.00 | T99 | N45°00'18"E | 20.00 |
| T42 | N32°00'01"E | 33.39 | T100 | S15°15'10"E | 48.34 |
| T43 | N45°46'41"W | 50.90 | T101 | S44°59'42"E | 25.98 |
| T44 | N71°10'44"E | 43.31 | T102 | S45°48'41"E | 56.56 |
| T45 | N27°05'07"E | 53.84 | T103 | S44°13'19"W | 20.00 |
| T46 | N58°00'00"E | 10.00 | T104 | S45°48'36"E | 17.00 |
| T47 | S32°00'00"E | 61.18 | T105 | N44°13'19"E | 20.00 |
| T48 | N46°38'42"W | 45.59 | T106 | S44°13'19"W | 20.00 |
| T49 | N11°49'15"E | 43.67 | T107 | S45°48'41"E | 14.85 |
| T50 | N00°00'00"E | 38.00 | T108 | N44°13'19"E | 20.00 |
| T51 | N00°00'00"E | 24.26 | T109 | S48°39'20"E | 20.00 |
| T52 | N50°00'00"W | 20.00 | T110 | N42°17'14"E | 17.28 |
| T53 | S00°00'00"E | 16.90 | T111 | N45°46'12"W | 20.00 |
| T54 | N90°00'00"E | 20.00 | T112 | N75°45'40"E | 46.09 |
| T55 | N90°00'00"E | 20.00 | T113 | N65°15'54"E | 31.40 |
| T56 | S00°00'00"E | 44.89 | T114 | S89°59'42"E | 50.97 |
| T57 | S36°14'49"E | 30.87 | T115 | S00°00'00"E | 26.26 |
| T58 | N53°45'11"E | 20.00 | T116 | S00°00'00"E | 70.00 |
| | | | T117 | N83°59'22"E | 27.00 |
| | | | T118 | S00°00'00"E | 20.00 |
| | | | T119 | N90°00'00"E | 59.47 |
| | | | T120 | N45°00'00"E | 21.21 |
| | | | T121 | N00°00'00"E | 60.38 |
| | | | T122 | N47°16'18"W | 19.32 |
| | | | T123 | S42°43'42"W | 20.00 |
| | | | T124 | N42°43'42"E | 20.00 |
| | | | T125 | N47°16'18"W | 22.01 |
| | | | T126 | N89°59'42"W | 20.00 |
| | | | T127 | N00°00'18"E | 38.30 |
| | | | T128 | N89°59'42"W | 60.69 |
| | | | T129 | S00°00'18"W | 60.00 |
| | | | T130 | N45°00'18"E | 20.00 |
| | | | T131 | N90°00'18"W | 20.00 |
| | | | T132 | N89°59'42"W | 15.50 |
| | | | T133 | S00°00'18"E | 20.00 |
| | | | T134 | N00°00'18"E | 20.00 |
| | | | T135 | N89°59'42"W | 15.46 |
| | | | T136 | S00°00'18"W | 20.00 |
| | | | T137 | N89°59'42"W | 30.75 |
| | | | T138 | N00°00'18"E | 32.50 |
| | | | T139 | N00°00'18"E | 12.50 |
| | | | T140 | S00°00'18"W | 57.32 |
| | | | T141 | N90°00'00"E | 21.37 |



Meridian Surveying and mapping inc. WEST PALM BEACH, FLORIDA

| | | | |
|-------------|-----------------|-------|-----------|
| DRAWN | A.R.S. & M.E.H. | DATE | AUG. 1981 |
| CHECKED | | SCALE | 1" = 60' |
| DRAWING NO. | 81-P-039 | | |

POINCIANA PLACE PHASE III C
A P.U.D.