

44/116

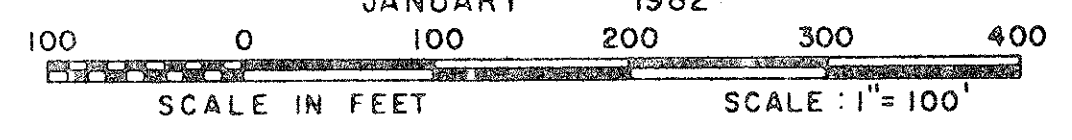
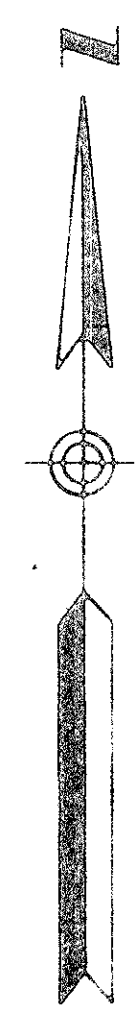
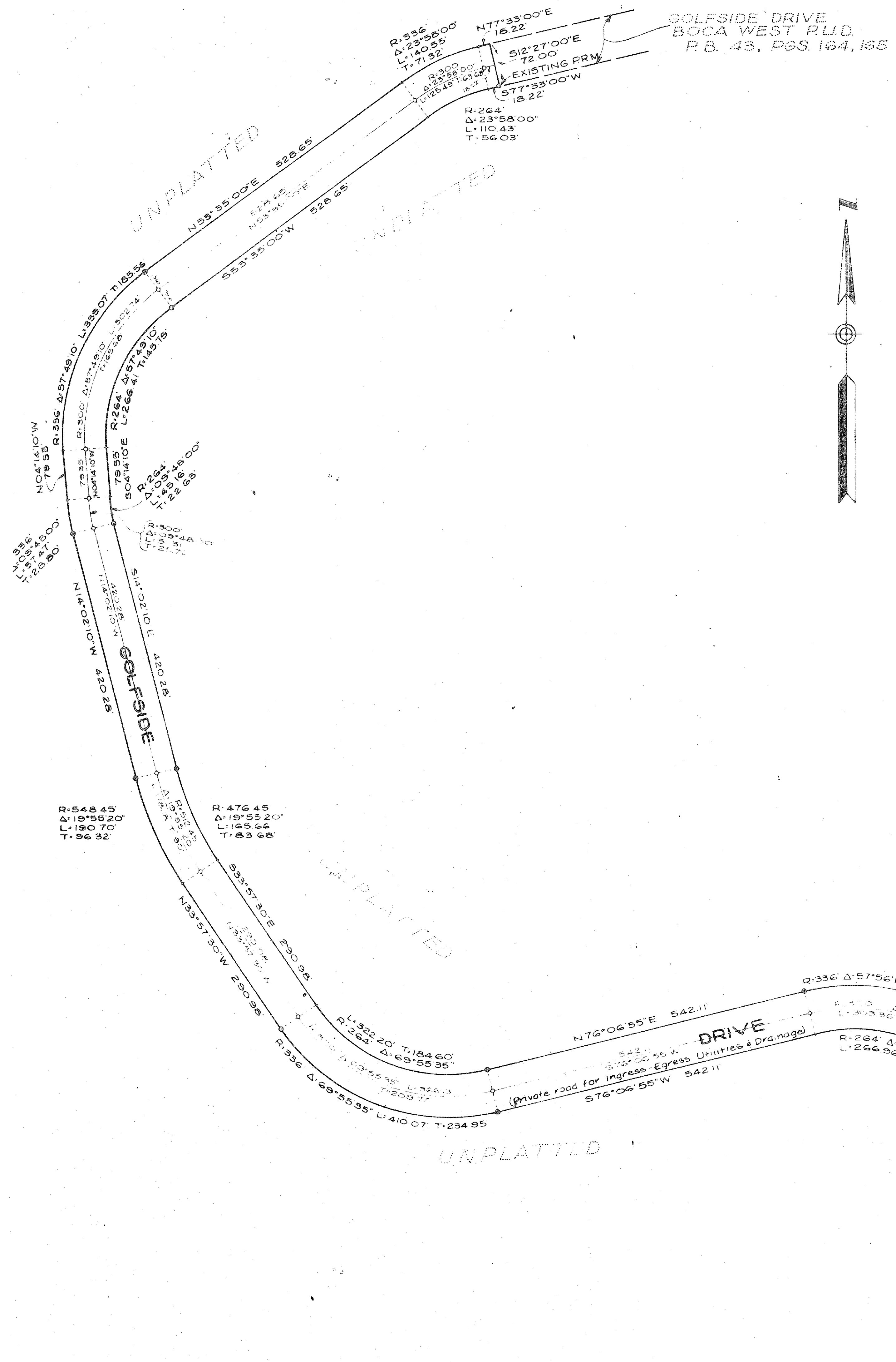
# GOLFSIDE DRIVE - PHASE II BOCA WEST - P.U.D.

IN PART OF SECTION 9, TWP. 47 S., RGE. 42 E.

PALM BEACH COUNTY, FLORIDA  
IN 2 SHEETS SHEET NO. 2  
GEE & JENSON  
ENGINEERS - ARCHITECTS - PLANNERS, INC.  
WEST PALM BEACH, FLORIDA  
JANUARY 1982

116

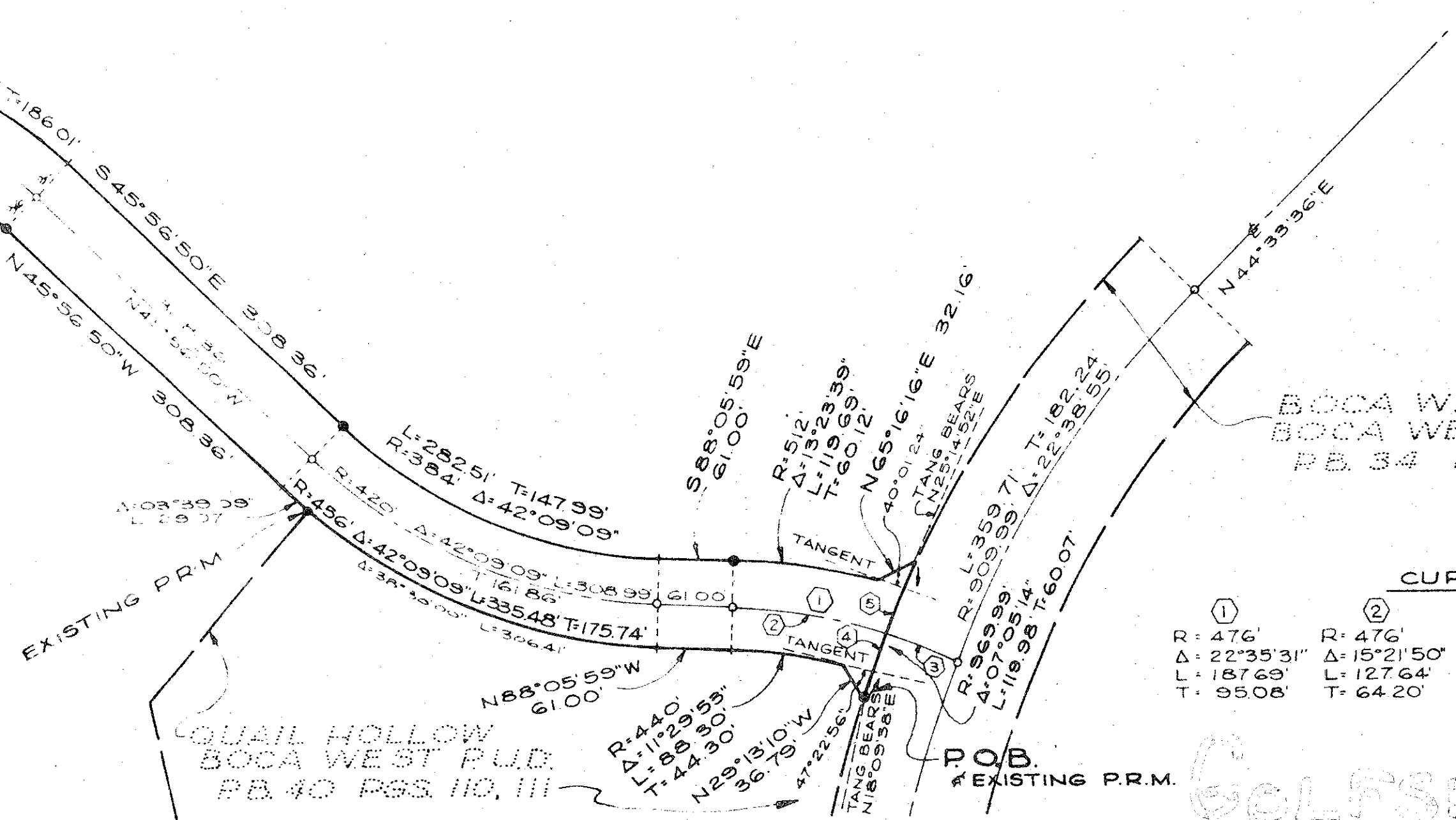
STATE OF FLORIDA  
COUNTY OF PALM BEACH  
This Plat was filed for record at  
M., this day of 1982  
and duly recorded in Plat Book No.  
on page  
JOHN B. DUNKLE, Clerk Circuit Court  
By: \_\_\_\_\_, D.C.



53

9-47-42

0214-017



CURVE DATA				
①	②	③	④	⑤
R: 476'	R: 476'	R: 476'	R: 969.99'	R: 969.99'
Δ: 22°35'31"	Δ: 15°21'50"	Δ: 07°13'41"	Δ: 03°41'13"	Δ: 03°24'01"
L: 187.69'	L: 127.64'	L: 60.05'	L: 62.42'	L: 57.56'
T: 95.08'	T: 64.20'	T: 30.06'		

GOLFSIDE DR. PH. II