

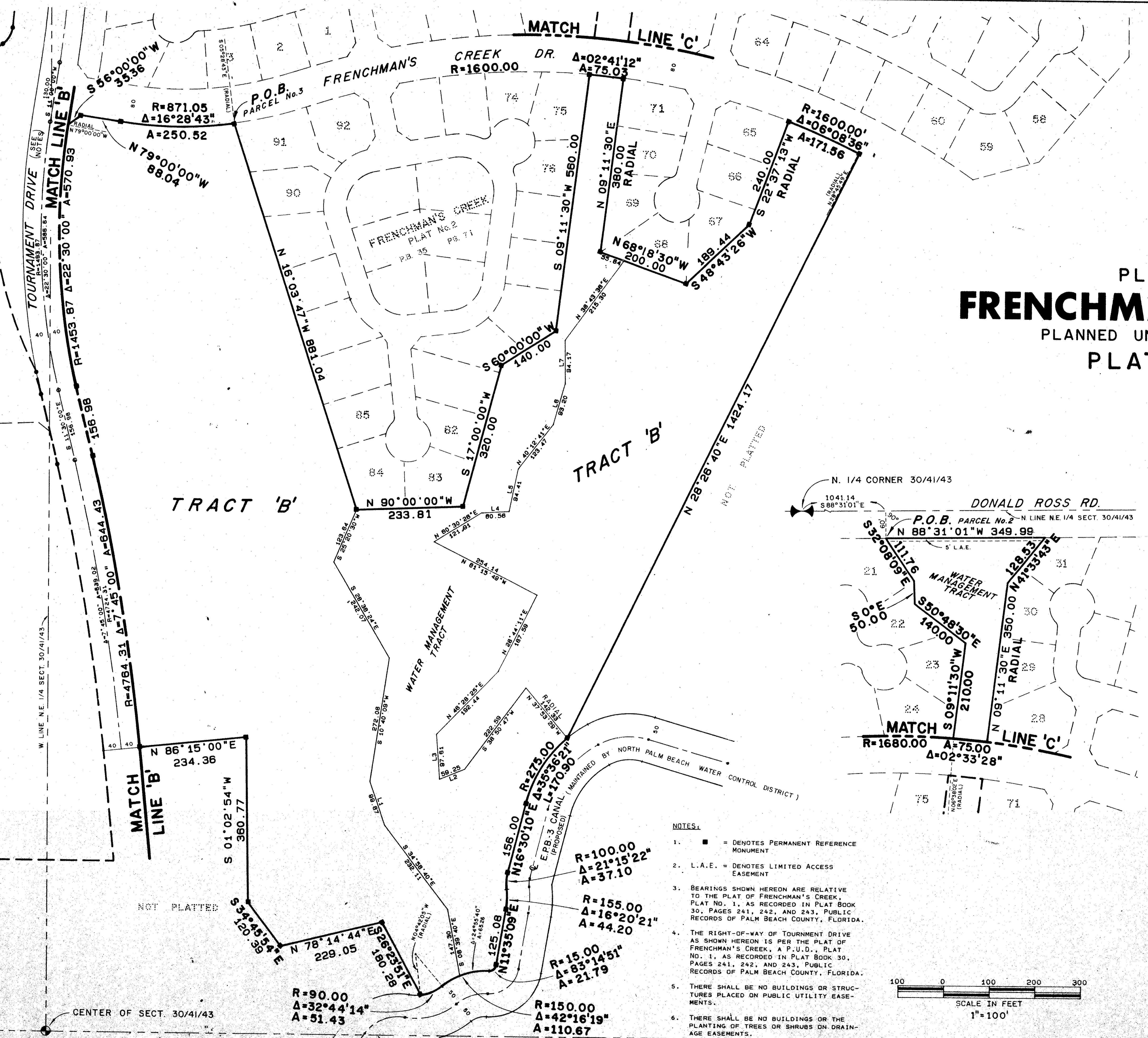
44/137

137

PLAT OF
FRENCHMAN'S CREEK
PLANNED UNIT DEVELOPMENT
PLAT No. 6

SEE SHEET 3

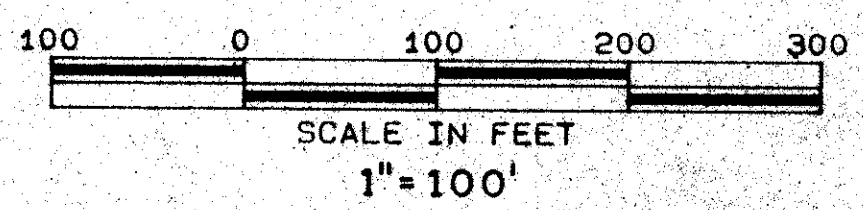
SEE SHEET 4



LINE	BEARING	DISTANCE
1	S 17° 18' 12" E	89.97
2	S 70° 08' 47" W	59.25
3	N 02° 14' 32" W	97.61
4	N 88° 52' 48" E	60.56
5	N 13° 55' 59" E	94.41
6	N 18° 02' 18" E	93.20
7	N 01° 14' 59" E	94.17

NOTES:

- = DENOTES PERMANENT REFERENCE MONUMENT
- L.A.E. = DENOTES LIMITED ACCESS EASEMENT
- BEARINGS SHOWN HEREON ARE RELATIVE TO THE PLAT OF FRENCHMAN'S CREEK, PLAT No. 1, AS RECORDED IN PLAT BOOK 30, PAGES 241, 242, AND 243, PUBLIC RECORDS OF PALM BEACH COUNTY, FLORIDA.
- THE RIGHT-OF-WAY OF TOURNAMENT DRIVE AS SHOWN HEREON IS PER THE PLAT OF FRENCHMAN'S CREEK, A P.U.D., PLAT No. 1, AS RECORDED IN PLAT BOOK 30, PAGES 241, 242, AND 243, PUBLIC RECORDS OF PALM BEACH COUNTY, FLORIDA.
- THERE SHALL BE NO BUILDINGS OR STRUCTURES PLACED ON PUBLIC UTILITY EASEMENTS.
- THERE SHALL BE NO BUILDINGS OR THE PLANTING OF TREES OR SHRUBS ON DRAINAGE EASEMENTS.



30-41-43
0248-004
44/137
FRENCHMAN'S CREEK
PLAT No. 6

WILLIAM G. WALLACE, INC.
CONSULTING ENGINEERS, LAND PLANNERS & SURVEYORS
21 NORTH WEAVER BLVD., PALM BEACH, FL 33480-1006 (407) 852-4333
3241 SW MARR RD., SUITE 100, PALM CITY, FL 32909 (407) 283-0309

FIELD	JOB NO. 82-0296	FB	PG
OFFICE	W.D.J.	DATE: APRIL 1982	DWG NO. 82-0296
CK'D	REF	SHEET	5 OF 5