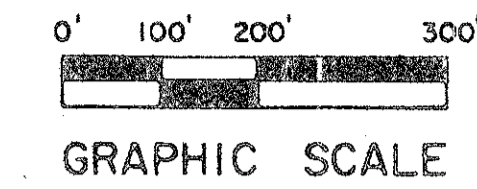
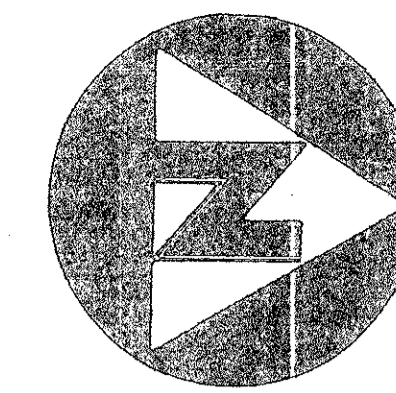


44/172

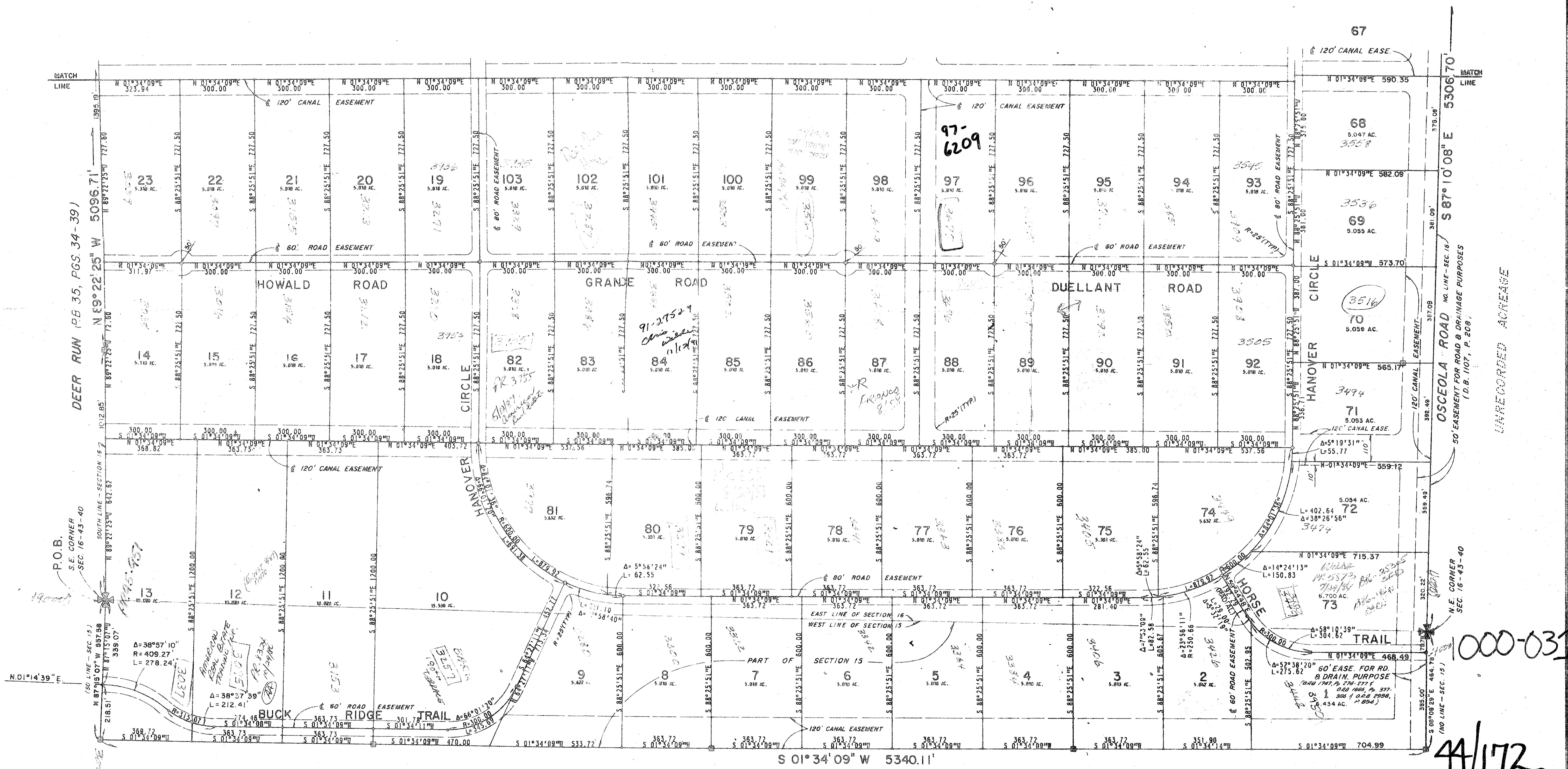
DEER RUN PLAT NO. 2

BEING A PART OF SECTION 15, ALL OF SECTION 16, AND A PART OF SECTION 17,
ALL LYING IN TOWNSHIP 43 SOUTH, RANGE 40 EAST,
PALM BEACH COUNTY, FLORIDA.
MARCH, 1982.



172

STATE OF FLORIDA
COUNTY OF PALM BEACH
THIS PLAT WAS FILED FOR
RECORD AT _____ H.
THIS DAY _____ OF
A. D. 1982,
AND DULY RECORDED IN PLAT
BOOK _____ ON PAGES _____
AND _____
JOHN B. DUNKLE, CLERK
CIRCUIT COURT
BY: _____ DC



DEER RUN (B 35, PGS. 34-39)
N 89° 22' 25" W 5096.71'
N 89° 22' 25" W 727.80'

P.O.B.
S.E. CORNER
SEC. 16-43-40

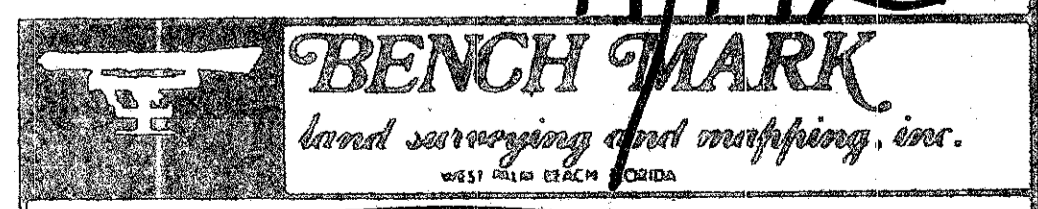
OSCEOLA ROAD (NO LINE - SEC. 16)
60' EASEMENT FOR ROAD & DRAINAGE PURPOSES
(D.B. 1107, P. 208)

UNRECORDED ACRES

1000-031

44/172

UNRECORDED ACRES



DEER RUN PLAT NO. 2

DATE	BY	SCALE	PLAT NO.	BOOK	PAGE
4-23-82	WVC	1"=200'	4-23-82	PS200	2