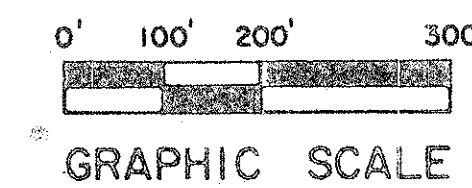
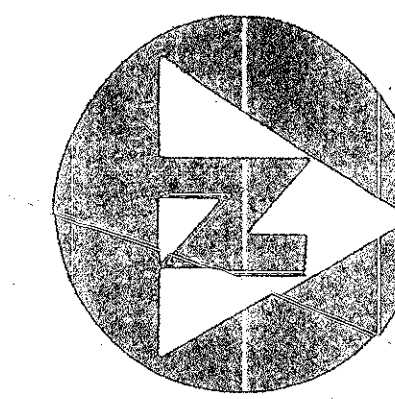


44/173

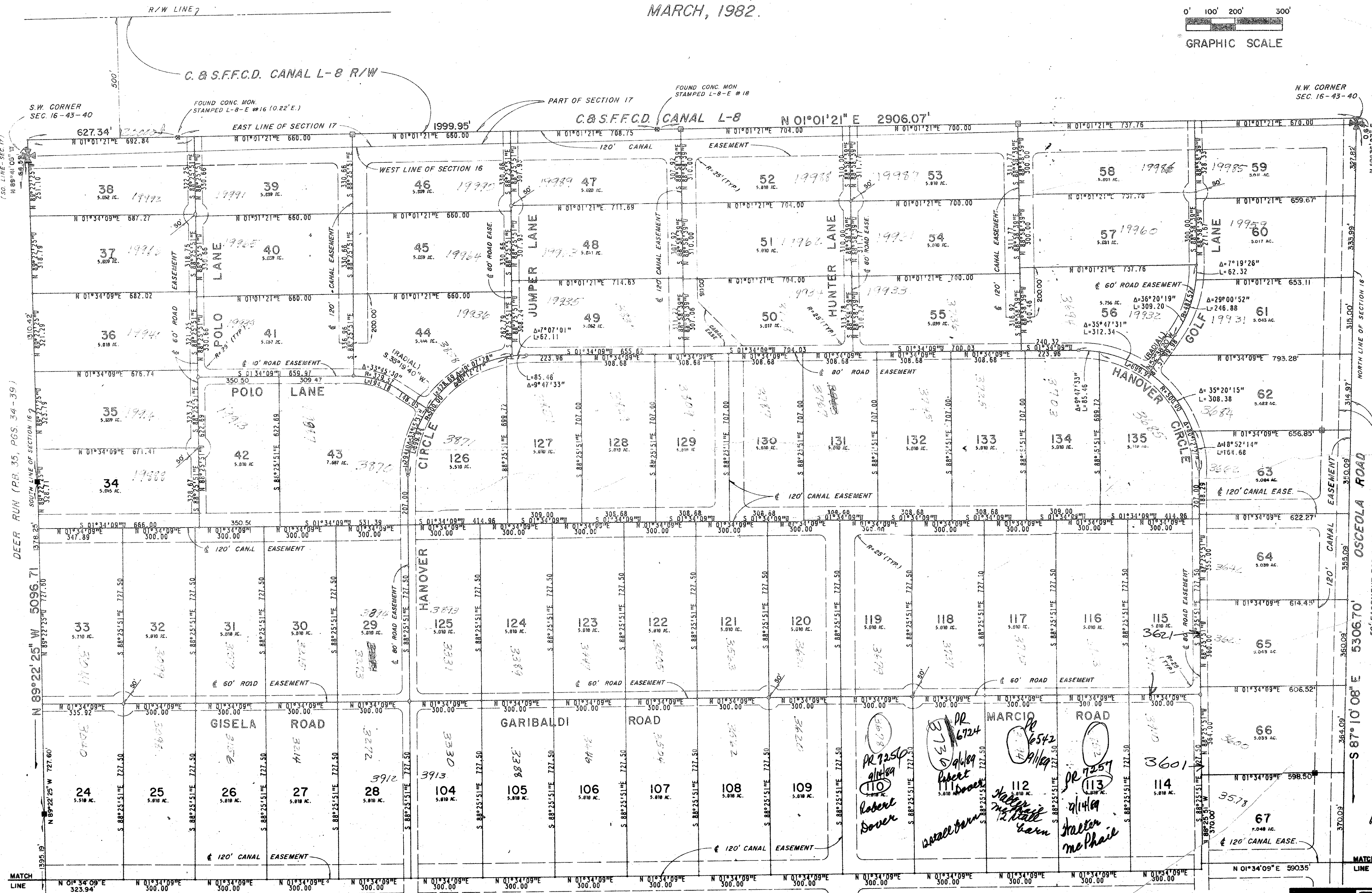
DEER RUN PLAT NO. 2

BEING A PART OF SECTION 15, ALL OF SECTION 16, AND A PART OF SECTION 17,
ALL LYING IN TOWNSHIP 43 SOUTH, RANGE 40 EAST,
PALM BEACH COUNTY, FLORIDA.
MARCH, 1982.



173

STATE OF FLORIDA
COUNTY OF PALM BEACH
THIS PLAT WAS FILED FOR
RECORD AT _____ OF
THIS DAY _____ A.D. 1982
AND DULY RECORDED IN PLAT
BOOK _____ ON PAGES _____
AND
JOHN B. DUNKLE, CLERK
CIRCUIT COURT
BY: _____ DC



1000-031

44/173

BENCH MARK
land surveying and mapping, inc.
WEST PALM BEACH, FLORIDA

DEER RUN PLAT NO. 2

DATE	REVISIONS	BY	SCALE	SIZE	FR. #	SHEET
			1"=200'	A	1	3 OF 3

DWW B6/TL CKD WVC
4-23-82 W.D. NO. P9200