

44/185

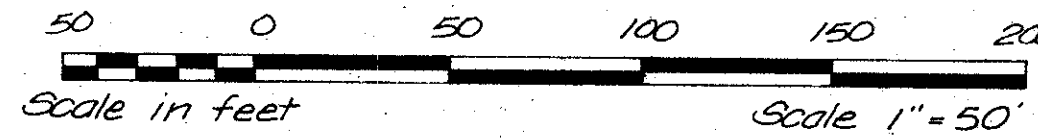
# GOLF AND TENNIS VILLAGE - PARCEL "C" OF PALM BEACH POLO AND COUNTRY CLUB WELLINGTON - P.U.D.

185

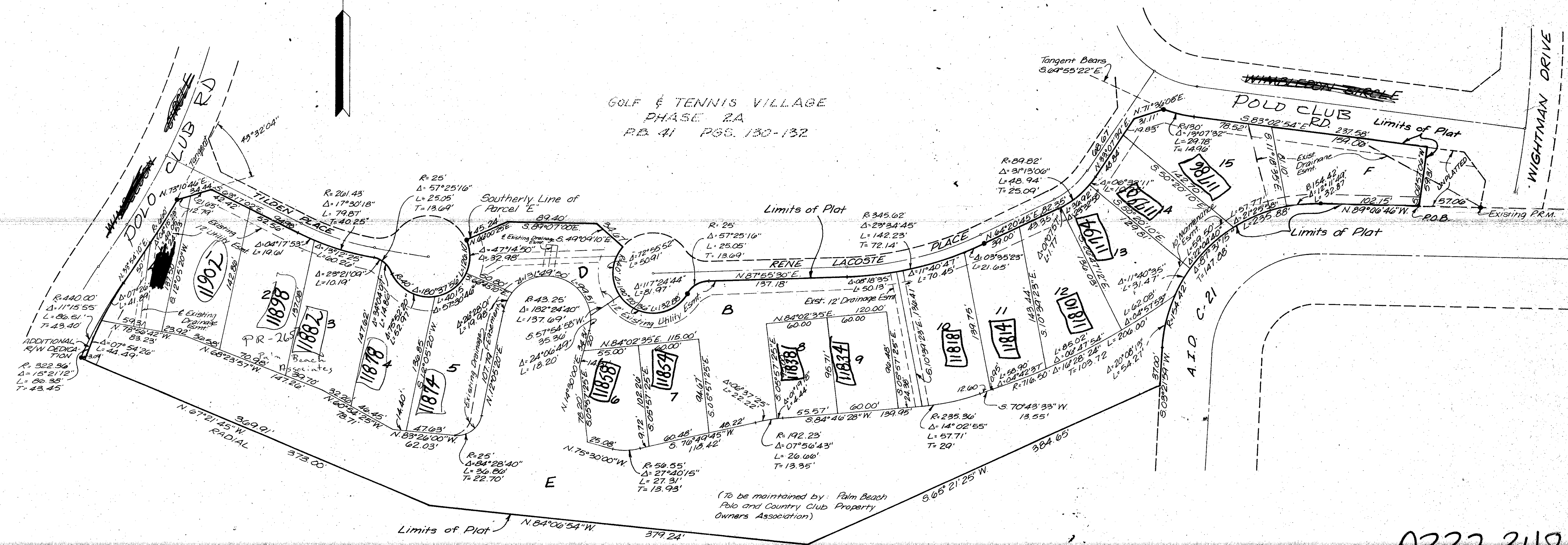
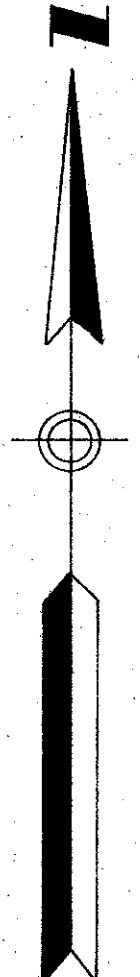
Being a Replat of part of PARCEL "C" of GOLF AND TENNIS VILLAGE - PHASE 2A OF PALM BEACH POLO AND COUNTRY CLUB  
WELLINGTON - P.U.D. as recorded in P.B. 41, Pgs. 130, 131 and 132, Public Records of Palm Beach County, Florida

IN PART OF SECTION 14, TWP. 44 S., RGE. 41 E.  
PALM BEACH COUNTY, FLORIDA  
IN 2 SHEETS SHEET NO. 2

GEE & JENSON  
ENGINEERS-ARCHITECTS-PLANNERS, INC.  
WEST PALM BEACH, FLORIDA  
JUNE 1982



STATE OF FLORIDA  
COUNTY OF PALM BEACH  
This Plat was filed for record at \_\_\_\_\_ M.  
this \_\_\_\_\_ day of \_\_\_\_\_, 1982  
and duly recorded in Plat Book No. \_\_\_\_\_  
on page \_\_\_\_\_  
JOHN B. DUNKLE, Clerk Circuit Court  
By: \_\_\_\_\_, D.C.



GOLF & TENNIS VILLAGE  
PHASE 2A  
P.B. 41 PGS. 130-132

(To be maintained by: Palm Beach  
Polo and Country Club Property  
Owners Association)

UNPLATTED

0332-348

Golf & Tennis Vill. Parc  
of P.B. 41 & C.C. Well.  
44/185