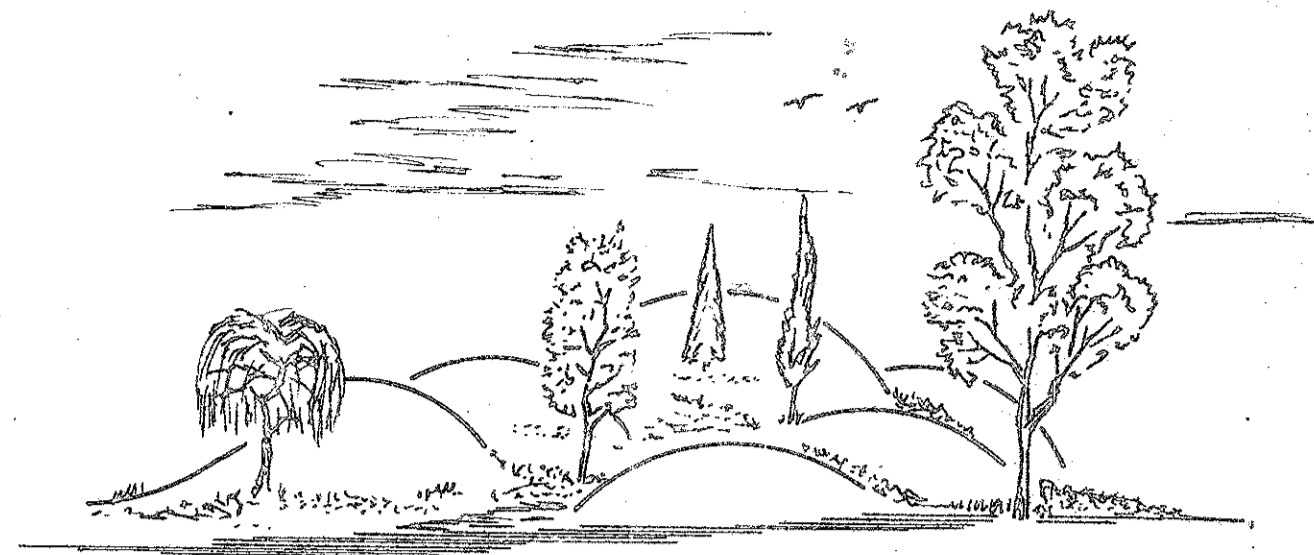
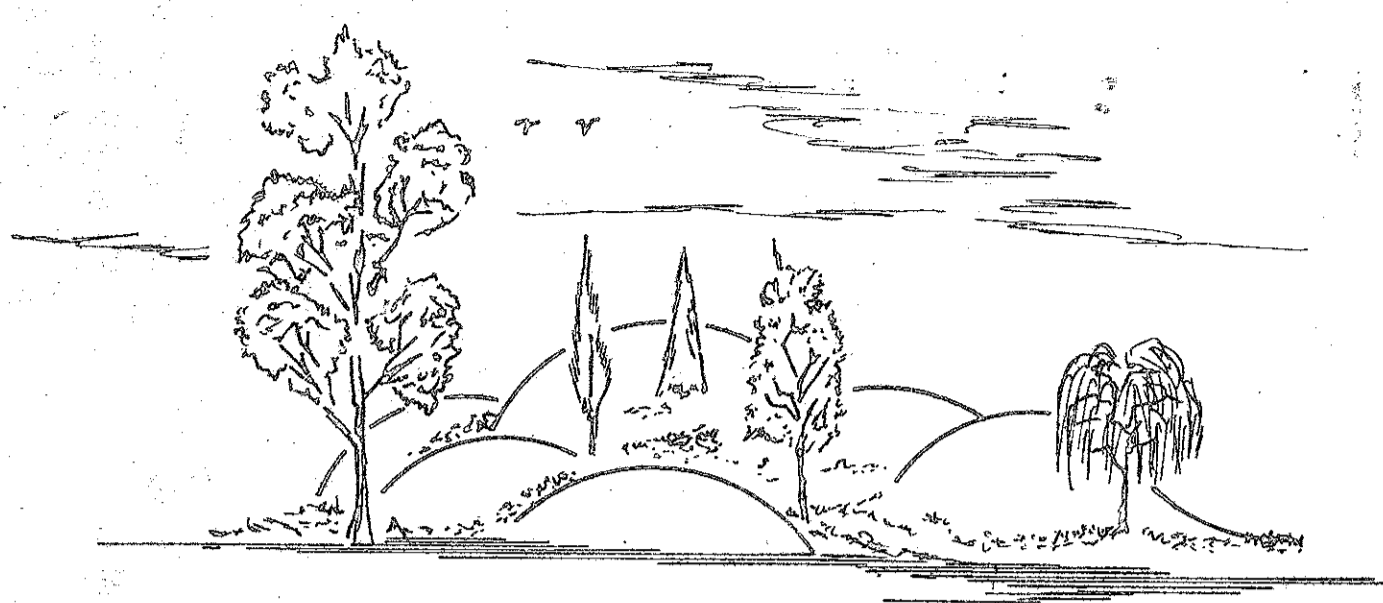


45/4

4

PART OF A PLANNED UNIT DEVELOPMENT GARDEN HILLS UNIT ONE

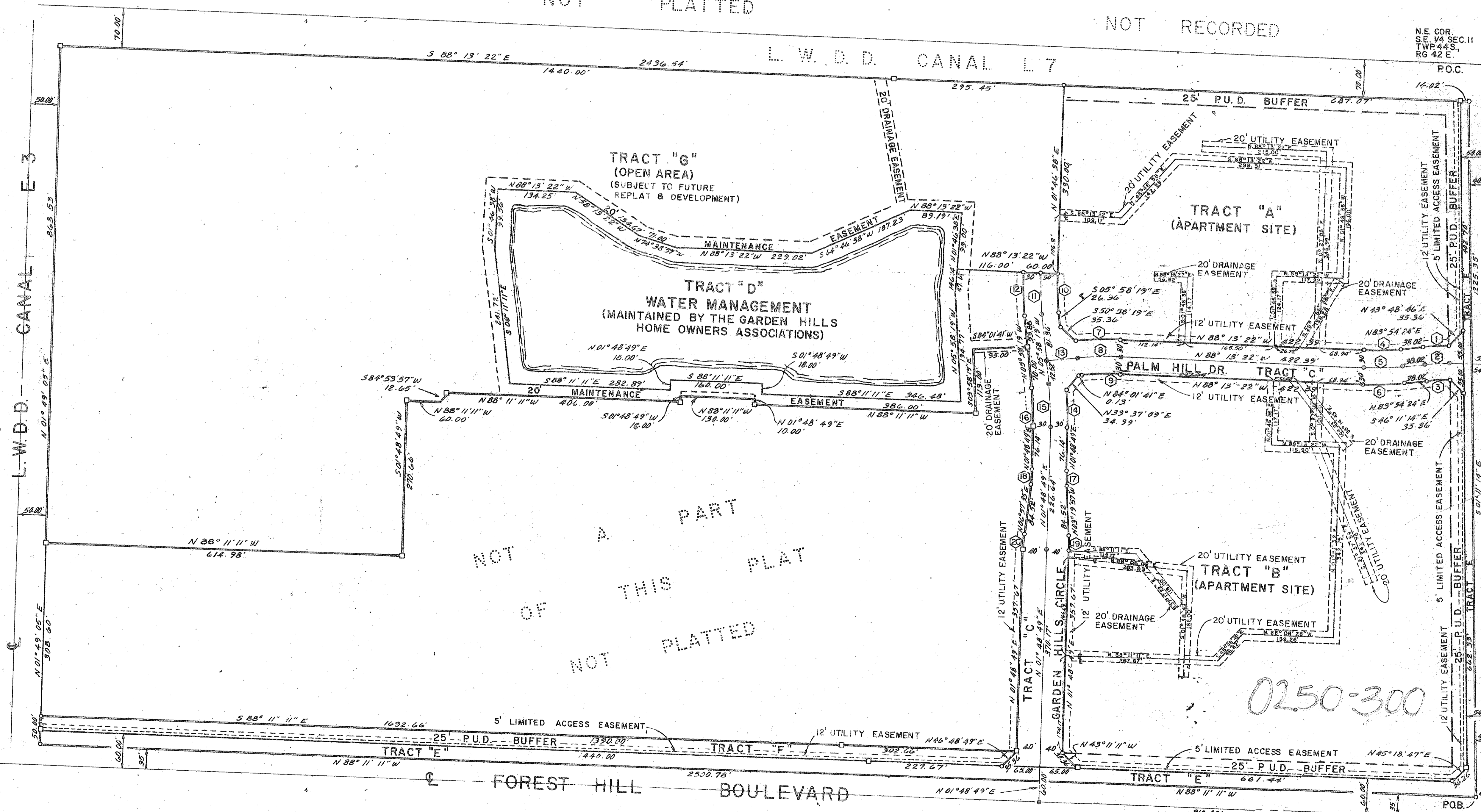
A SUBDIVISION IN THE NORTH 1/2 OF THE SOUTHEAST 1/4
OF SECTION II, TOWNSHIP 44 SOUTH, RANGE 42 EAST IN
PALM BEACH COUNTY, FLORIDA
MARCH 1982



NOT PLATTED

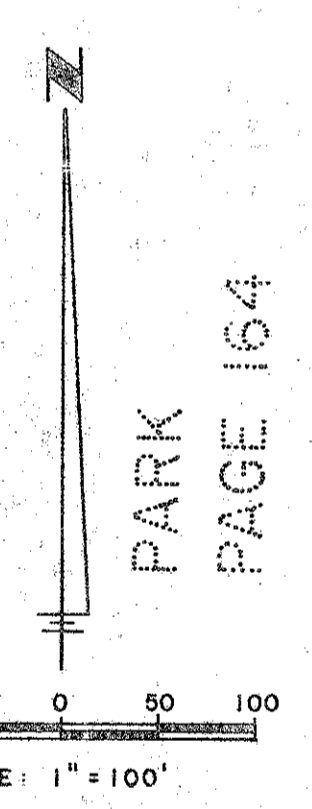
NOT RECORDED

CURVE CHART



NORTH LINE OF THE SW 1/4 OF SEC. 12 TWP. 44 S. RG. 42 E. S. 88° 24' 29" E.

Curve No.	A	R	T
1	45.38'	530.00'	04° 54' 22"
2	42.81'	500.00'	04° 54' 22"
3	40.25'	470.00'	04° 54' 22"
4	44.52'	470.00'	07° 52' 14"
5	68.68'	500.00'	07° 52' 14"
6	78.80'	530.00'	07° 52' 14"
7	78.44'	530.00'	07° 52' 14"
8	74.39'	550.00'	07° 44' 57"
9	70.33'	520.00'	07° 44' 57"
10	70.33'	520.00'	07° 44' 57"
11	74.39'	550.00'	07° 44' 57"
12	78.44'	530.00'	07° 44' 57"
13	584° 01' 41" W	55.00'	
14	66.86'	530.00'	06° 36' 11"
15	74.74'	550.00'	07° 47' 08"
16	70.66'	520.00'	07° 47' 08"
17	26.94'	300.00'	05° 08' 46"
18	26.94'	300.00'	05° 08' 46"
19	26.94'	300.00'	05° 08' 46"
20	26.94'	300.00'	05° 08' 46"



NAZARENE
P.B. 27

CANAL E 3
L.W.D.D. CANAL

ROAD EAST LINE OF N 1/2 OF SEC. 14 TWP. 44 S. RG. 42 E. S. 88° 24' 29" E.
PALM HILL DR. TRACT "C"
HAVERHILL 1255.87
PALM HILL VILLAS UNIT ONE
P.B. 40 PGS. 188, 189

ABBEY PARK PLAT N° 1
P.B. 40 PGS. 92, 93

NOT PLATTED
NOT RECORDED

GARDEN HILLS #1
RM-SE
P 80-141
45/4