

45/46

# PARKWALK - PLAT NO. 1

BEING THE SIXTH PLAT OF LE CHALET (P.U.D.)  
SECTION 14, TOWNSHIP 45 SOUTH, RANGE 42 EAST

PALM BEACH COUNTY, FLORIDA  
SEPT. , 1982

46

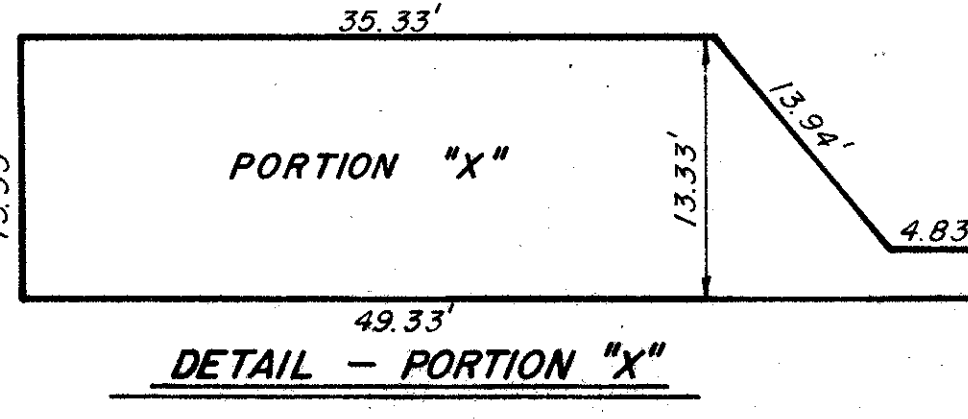
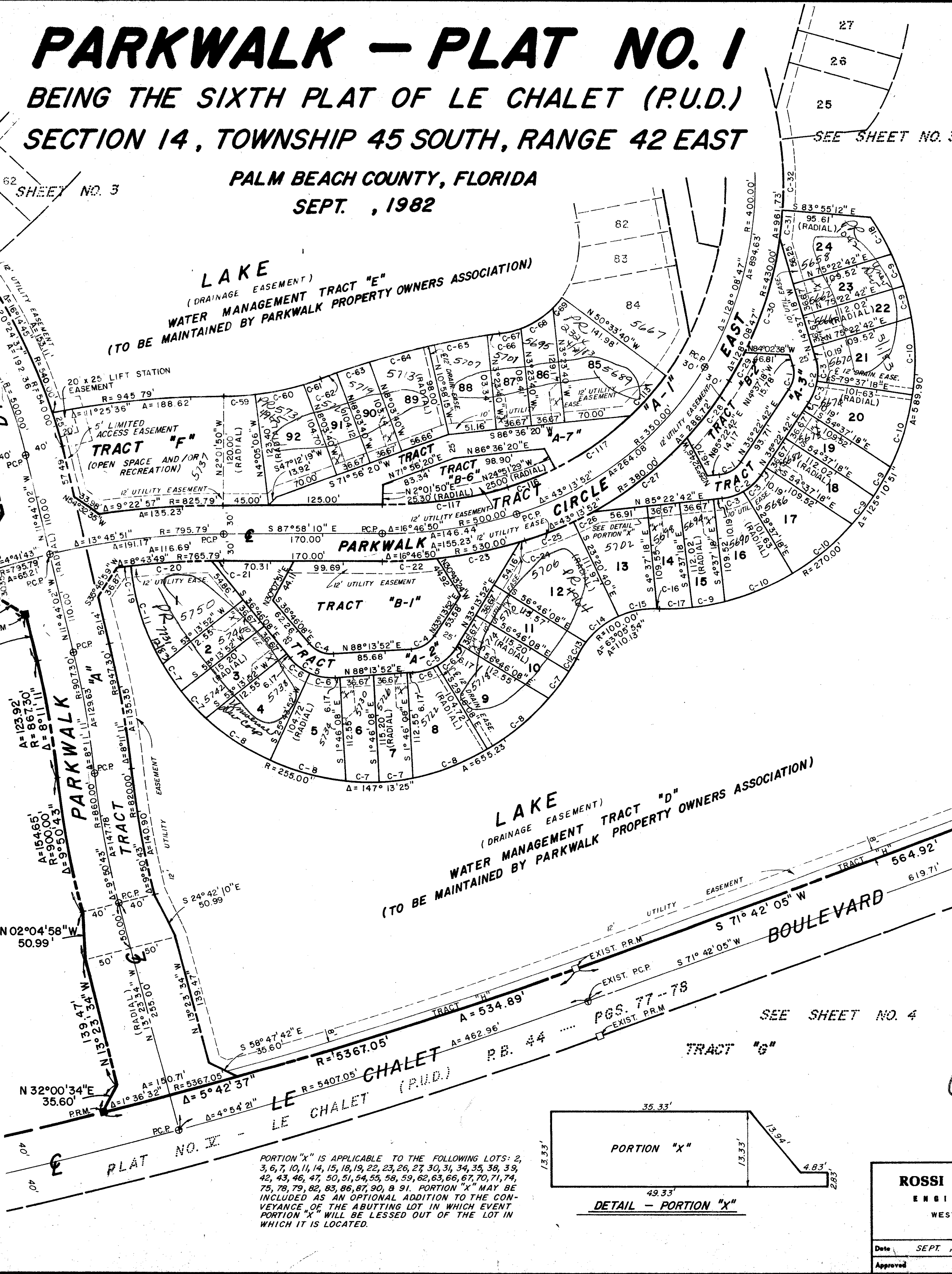
STATE OF FLORIDA }  
COUNTY OF PALM BEACH }  
This Plat was filed for record at \_\_\_\_\_ M.  
this \_\_\_\_\_ day of \_\_\_\_\_  
19 \_\_\_\_\_, and duly recorded in Plat Book No. \_\_\_\_\_  
on page \_\_\_\_\_  
JOHN B. DUNKLE, Clerk Circuit Court  
By \_\_\_\_\_, D.C.

### SURVEYOR'S NOTES

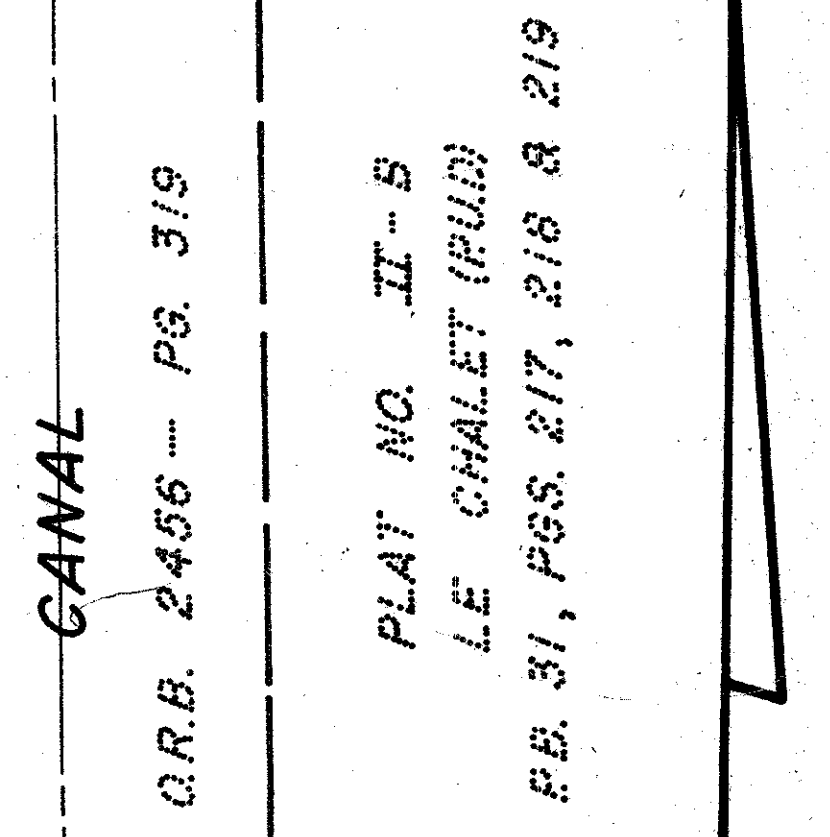
- PERMANENT REFERENCE MONUMENTS ARE DESIGNATED THUSLY: P.R.M.
- PERMANENT CONTROL POINTS ARE DESIGNATED THUSLY: P.C.P.
- ALL BEARINGS SHOWN HEREON ARE REFERENCED TO THE WEST SECTION LINE OF SECTION 14, ASSUMED TO BEAR 1°-36'-09" EAST.
- BUILDING SETBACK LINES SHALL BE AS REQUIRED BY ORDINANCES OF PALM BEACH COUNTY, FLORIDA.
- NO BUILDINGS OR ANY KIND OF CONSTRUCTION SHALL BE PLACED ON UTILITY OR DRAINAGE EASEMENTS.
- NO STRUCTURES, TREES OR SHRUBS SHALL BE PLACED ON DRAINAGE EASEMENTS.
- APPROVAL OF LANDSCAPING ON UTILITY EASEMENTS OTHER THAN WATER OR SEWER SHALL BE ONLY WITH APPROVAL OF ALL UTILITIES OCCUPYING SAME.
- IN INSTANCES WHERE DRAINAGE AND UTILITY EASEMENTS INTERSECT THE AREAS OF INTERSECTION ARE DRAINAGE AND UTILITY EASEMENTS, CONSTRUCTION, OPERATION AND MAINTENANCE OF UTILITIES IN THESE AREAS OF INTERSECTION SHALL NOT INTERFERE WITH THE CONSTRUCTION, OPERATION AND MAINTENANCE OF DRAINAGE FACILITIES LOCATED THEREIN.
- WHERE THE DRAINAGE FOR PUBLIC ROADS TRAVERSES THIS DEVELOPMENT, THE COUNTY SHALL HAVE THE RIGHT, WHEN WARRANTED, TO ENTER THE DEVELOPMENT TO MAINTAIN SAID PUBLIC ROAD DRAINAGE SYSTEM BY METHODS DEEMED PROPER BY THE COUNTY.

### CURVE DATA TABLE

CURVE NO.	ARC LENGTH	RADIUS	CENTRAL ANGLE	CURVE NO.	ARC LENGTH	RADIUS	CENTRAL ANGLE
C-1	28.36'	32.50'	50°-00'-00"	C-60	53.79'	300.00'	10°-16'-21"
C-2	50.18'	57.50'	50°-00'-00"	C-61	22.30'	300.00'	4°-15'-31"
C-3	25.09'	57.50'	25°-00'-00"	C-62	14.38'	900.00'	0°-54'-57"
C-4	31.20'	32.50'	55°-00'-00"	C-63	36.69'	900.00'	2°-20'-08"
C-5	55.20'	57.50'	55°-00'-00"	C-64	69.02'	900.00'	4°-23'-39"
C-6	27.60'	57.50'	27°-30'-00"	C-65	64.39'	900.00'	4°-05'-57"
C-7	36.79'	255.00'	8°-16'-02"	C-66	11.64'	900.00'	0°-44'-27"
C-8	85.60'	255.00'	19°-13'-58"	C-67	25.51'	100.00'	14°-36'-54"
C-9	36.79'	270.00'	7°-48'-13"	C-68	42.46'	100.00'	24°-19'-32"
C-10	81.03'	270.00'	17°-11'-42"	C-69	9.58'	100.00'	5°-29'-23"
C-11	112.96'	255.00'	25°-22'-52"	C-70	14.89'	100.00'	8°-31'-56"
C-12	15.91'	255.00'	3°-34'-31"	C-71	41.52'	100.00'	23°-47'-19"
C-13	20.82'	100.00'	11°-55'-45"	C-72	30.19'	100.00'	17°-18'-01"
C-14	43.76'	100.00'	25°-04'-14"	C-73	6.79'	900.00'	0°-25'-57"
C-15	43.53'	100.00'	24°-56'-31"	C-74	64.15'	900.00'	4°-05'-01"
C-16	2.02'	100.00'	1°-09'-24"	C-75	62.20'	900.00'	3°-57'-36"
C-17	34.76'	270.00'	7°-22'-33"	C-76	13.70'	900.00'	0°-52'-20"
C-18	47.12'	270.00'	10°-00'-00"	C-77	23.46'	100.00'	13°-26'-36"
C-19	14.88'	765.79'	1°-06'-48"	C-78	41.66'	100.00'	23°-52'-10"
C-20	87.96'	765.79'	6°-34'-53"	C-79	12.35'	100.00'	7°-04'-30"
C-21	13.84'	765.79'	1°-02'-09"	C-80	26.64'	100.00'	15°-15'-46"
C-22	62.05'	530.00'	6°-42'-30"	C-81	39.18'	100.00'	22°-26'-58"
C-23	89.07'	530.00'	9°-37'-46"	C-82	14.26'	100.00'	8°-10'-23"
C-24	4.10'	530.00'	0°-26'-35"	C-83	22.46'	900.00'	1°-25'-48"
C-25	57.00'	380.00'	8°-35'-39"	C-84	70.53'	900.00'	4°-29'-25"
C-26	23.44'	380.00'	3°-32'-02"	C-85	62.66'	900.00'	3°-59'-20"
C-27	129.94'	380.00'	19°-35'-31"	C-86	120.41'	900.00'	7°-39'-55"
C-28	76.34'	380.00'	11°-30'-39"	C-87	10.85'	900.00'	0°-41'-27"
C-29	41.17'	430.00'	5°-29'-07"	C-88	25.99'	100.00'	14°-53'-35"
C-30	128.15'	430.00'	17°-04'-33"	C-89	39.88'	100.00'	22°-50'-53"
C-31	25.35'	430.00'	3°-22'-40"	C-90	35.83'	100.00'	20°-31'-44"
C-32	76.39'	430.00'	10°-10'-43"	C-91	21.60'	100.00'	12°-22'-36"
C-33	27.13'	430.00'	3°-36'-53"	C-92	15.18'	900.00'	0°-58'-00"
C-34	124.81'	430.00'	16°-37'-51"	C-93	36.67'	900.00'	2°-20'-05"
C-35	122.96'	430.00'	16°-23'-02"	C-94	69.15'	900.00'	4°-24'-07"
C-36	31.19'	430.00'	4°-09'-20"	C-95	65.24'	900.00'	4°-09'-11"
C-37	49.28'	430.00'	7°-04'-18"	C-96	36.67'	900.00'	2°-20'-05"
C-38	103.96'	430.00'	13°-51'-02"	C-97	36.69'	900.00'	2°-20'-09"
C-39	106.53'	430.00'	14°-11'-40"	C-98	75.36'	900.00'	4°-47'-36"
C-40	28.17'	630.00'	2°-33'-43"	C-99	52.41'	570.00'	5°-16'-06"
C-41	101.86'	630.00'	9°-15'-48"	C-100	135.03'	570.00'	13°-34'-21"
C-42	51.30'	630.00'	4°-39'-57"	C-101	30.01'	570.00'	3°-01'-01"
C-43	60.56'	630.00'	5°-30'-29"	C-102	37.01'	570.00'	3°-43'-12"
C-44	92.03'	630.00'	8°-22'-10"	C-103	111.79'	570.00'	11°-14'-14"
C-45	123.97'	630.00'	11°-16'-30"	C-104	48.04'	570.00'	4°-49'-43"
C-46	33.32'	270.00'	7°-04'-18"	C-105	168.92'	370.00'	26°-09'-30"
C-47	3.45'	100.00'	1°-58'-29"	C-106	99.64'	370.00'	15°-25'-48"
C-48	45.58'	100.00'	26°-07'-06"	C-107	60.17'	370.00'	9°-19'-03"
C-49	48.74'	100.00'	27°-55'-30"	C-108	67.25'	370.00'	10°-24'-48"
C-50	8.88'	100.00'	5°-05'-11"	C-109	94.58'	370.00'	14°-38'-47"
C-51	27.86'	255.00'	6°-15'-40"	C-110	218.75'	370.00'	33°-52'-25"
C-52	11.76'	255.00'	2°-38'-38"	C-111	98.22'	370.00'	15°-12'-35"
C-53	25.06'	100.00'	14°-21'-24"	C-112	20.00'	370.00'	3°-05'-50"
C-54	35.66'	100.00'	20°-25'-51"	C-113	31.54'	320.00'	5°-38'-52"
C-55	34.33'	100.00'	19°-41'-31"	C-114	56.87'	320.00'	10°-10'-58"
C-56	31.16'	100.00'	17°-51'-08"	C-115	96.58'	320.00'	17°-17'-33"
C-57	5.91'	255.00'	1°-19'-38"	C-116	56.45'	220.00'	10°-06'-28"
C-58	52.13'	810.00'	3°-41'-16"	C-117	137.65'	470.00'	16°-46'-50"
C-59	32.02'	300.00'	6°-06'-56"	C-118	31.57'	740.00'	2°-26'-39"
C-119	97.32'	740.00'	7°-32'-05"				



PORTION "X" IS APPLICABLE TO THE FOLLOWING LOTS: 2, 3, 6, 7, 10, 11, 14, 15, 18, 19, 22, 23, 26, 27, 30, 31, 34, 35, 38, 39, 42, 43, 46, 47, 50, 51, 54, 55, 58, 59, 62, 63, 66, 67, 70, 71, 74, 75, 78, 79, 82, 83, 86, 87, 90, 81. PORTION "X" MAY BE INCLUDED AS AN OPTIONAL ADDITION TO THE CONVEYANCE OF THE ABUTTING LOT IN WHICH EVENT PORTION "X" WILL BE LESSED OUT OF THE LOT IN WHICH IT IS LOCATED.



ROSSI AND MALAVASI ENGINEERS, INC.  
WEST PALM BEACH, FLORIDA

DESIGNED BY R. ANDERSON  
DRAWN BY T. GURBELO  
CHECKED BY

DATE: SEPT. , 1982  
JOB NO. 4210-82  
FILE NO. S-1266-00

Scale: 1" = 60'  
SHEET NO. 2

0270-305 14-45-42

**PARKWALK PLAT NO. 1**  
IN 4 SHEETS SHEET NO. 2

PLAT NO. II - B  
LE CHALET (P.U.D.)  
P.B. 31, PGS. 217, 218 & 219

PLAT NO. III - B  
LE CHALET (P.U.D.)  
P.B. 37, PGS. 57 - 62

C.R.B. 2456 - PG. 319

C.R.B. 2456 - PG. 319

SEE SHEET NO. 3

SEE SHEET NO. 4

SEE SHEET NO. 3

PLATTED

NOT

E-3

CANAL

L.W.D.

POINT "A"

EXIST. P.R.M.

EXIST. P.C.P.

PR.M.

1451.78'

725.89'

65'

65'

65'

65'

65'

65'