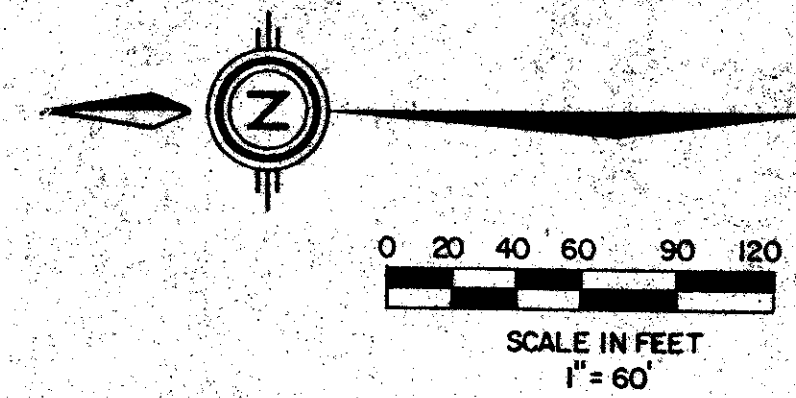


45/65

# WHISPER WALK SECTION A, PLAT NO. 1 (PART OF A P.U.D.)

SITUATE IN SECTION 5, TOWNSHIP 47 SOUTH, RANGE 42  
EAST, PALM BEACH COUNTY, FLORIDA, BEING A REPLAT  
OF A PORTION OF TRACT A OF THE BOUNDARY PLAT OF  
WHISPER WALK (P.B. 43, P. 189-191).



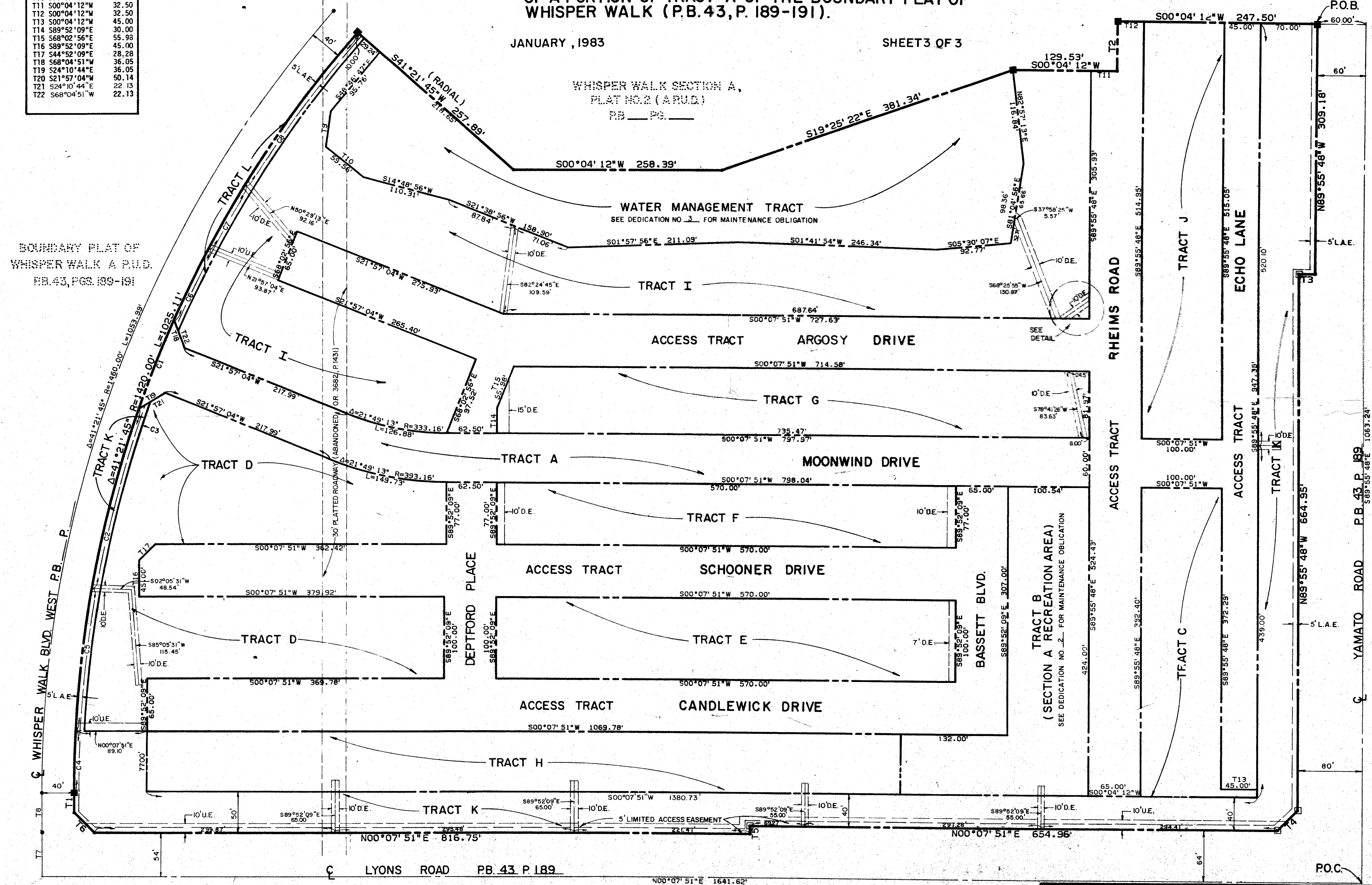
# 65

STATE OF FLORIDA  
COUNTY OF PALM BEACH  
THIS PLAT WAS FILED FOR  
RECORD AT  
THIS DAY OF  
AD, 1982 AND DULY RECORDED  
IN PLAT BOOK ON PAGES  
AND  
JOHN B. DINKLE, CLERK  
CIRCUIT COURT  
BY: DC.

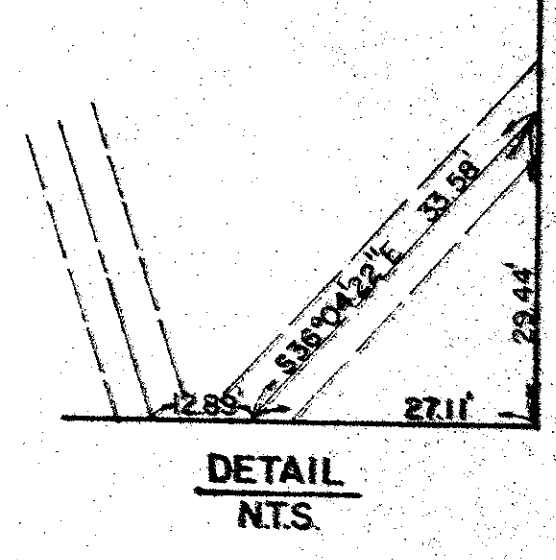
NO	BEARING	DISTANCE	NO	DELTA	RADIUS	LENGTH
T1	N90°00'00"E	24.75'	C1	04°31'09"	1420.00	1126.00
T2	S89°55'48"E	61.98	C2	02°22'19"	1420.00	232.27
T3	N00°04'12"W	20.00	C3	02°24'11"	1410.00	59.14
T4	N44°53'58"W	35.37	C4	03°07'15"	1420.00	77.34
T5	N89°52'09"W	10.00	C5	07°11'56"	1420.00	178.41
T6	N45°03'55"E	35.31	C6	04°03'49"	1420.00	100.71
T7	N90°00'00"E	54.00	C7	03°40'13"	1420.00	90.96
T8	S90°00'00"E	49.60	C8	09°25'05"	1420.00	233.41
T9	N82°06'59"W	44.35				
T10	S38°37'37"W	59.56				
T11	S00°04'12"W	32.50				
T12	S00°04'12"W	32.50				
T13	S00°04'12"W	45.00				
T14	S89°52'09"E	30.00				
T15	S68°02'56"E	55.98				
T16	S89°52'09"E	45.00				
T17	S44°52'09"E	28.28				
T18	S68°04'51"W	36.05				
T19	S24°10'44"E	36.05				
T20	S21°57'04"W	50.14				
T21	S24°10'44"E	32.13				
T22	S68°04'51"W	22.13				

JANUARY, 1983

SHEET 3 OF 3



BOUNDARY PLAT OF  
WHISPER WALK A.P.U.D.  
P.B. 43, P. 189-191



CENTURY VILLAGE #507  
PLAT NO. 4  
P.B. 43, P. 189-191

Bag #12 PR-256 1/24/86  
Bag #1 PR-17 1/14/83  
Bag #2 PR-19 1/14/83  
Bag #3 PR-19 2/12/83  
Bag #5 PR-569 2/12/83  
Bag #15 PR-727 10/11/85  
Bag #17 PR-236 1/10/86  
Bag #18 PR-235 1/10/86  
Bag #11 PR-288 5/12/83  
Bag #10 PR-285 5/12/83  
Bag #9 PR-285 5/12/83  
Bag #8 PR-286 5/12/83

5-47-42  
0339-300

45/65

PALM BEACH FARMS PLAT NO. 3  
P.B. 2, P. 645

PUD DATA	
GROSS AREA	29.81 ± ACRES
TOTAL NO. DWELLING UNITS (D.U.'s)	182
GROSS DENSITY	6.44 D.U.'s/ACRE
BUILDING COVERAGE	5.30 ± ACRES
ROAD RIGHT-OF-WAY	1.64 ± ACRES
OPEN SPACE	22.20 ± ACRES

Meridian  
Surveying and mapping Inc.

WEST PALM BEACH, FLORIDA

DRAWN	M.E.H.	DATE	JANUARY, 1982
CHECKED		SCALE	1" = 60'
DRAWING NO.	81-P-068-1		

WHISPER WALK SECTION A,  
PLAT NO. 1 (PART OF A P.U.D.)