

45/80

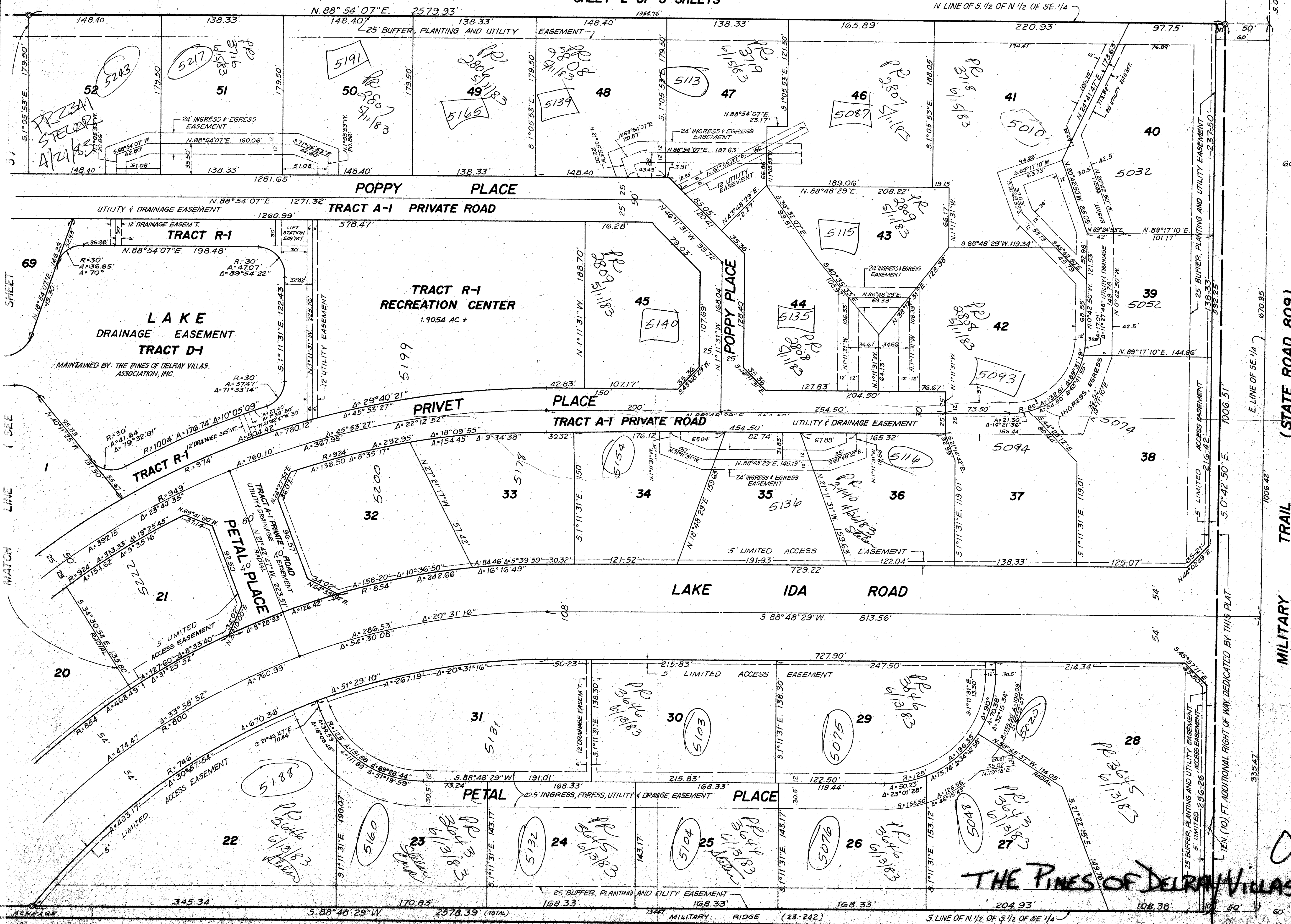
**THE PINES OF DELRAY VILLAS P.U.D.**  
 A PLAT OF A PORTION OF SECTION II, TOWNSHIP 46 SOUTH, RANGE 42 EAST  
 PALM BEACH COUNTY, FLORIDA  
 WINNINGHAM & LIVELY, INC. SURVEYORS - ENGINEERS FORT LAUDERDALE, FLORIDA  
 SCALE 1" = 50' MAY, 1982

N.W. COR. OF S.E. 1/4  
SEC. 11-46-42

80

ACREAGE

SHEET 2 OF 3 SHEETS



MILITARY TRAIL (STATE ROAD 809)

COUNTRY MANORS SECTION 4 (35-17 & 18)

LAKE IDA ROAD

PINE TRAIL SECTION 4 (35-151)

0296-001  
THE PINES OF DELRAY VILLAS PUD  
45/80