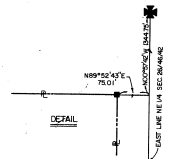


This is not a certified copy

COUNTRY LAKE, A P.U.D.
 SITUATE IN SECTION 26, TOWNSHIP 46 SOUTH,
 RANGE 42 EAST, PALM BEACH COUNTY, FLORIDA.
 APRIL, 1983 SHEET 2 OF 2

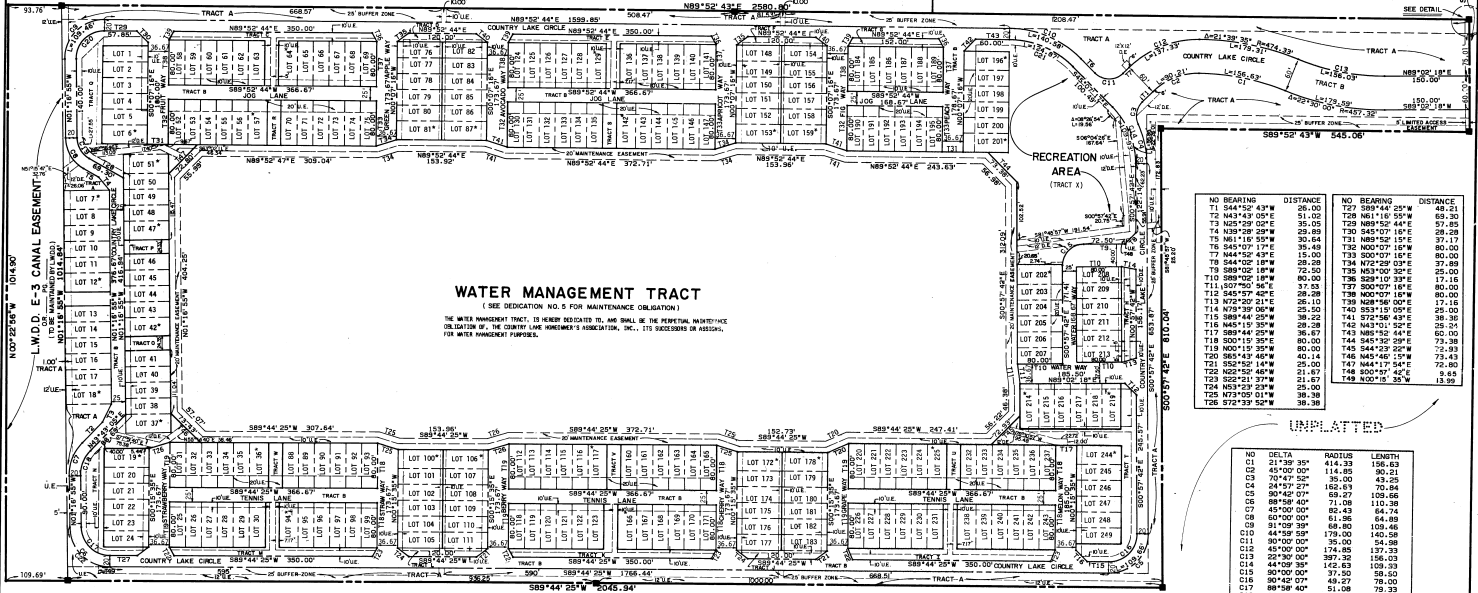
166

STATE OF FLORIDA
 COUNTY OF PALM BEACH
 SECOND BY
 THIS PLAT WAS FILED FOR
 RECORD BY
 THIS SURVEYOR'S DATA RECORDED
 IN PLAT BOOK _____ ON PAGES
 AND _____
 JOHN B. DUNKLE, CLERK
 CIRCUIT COURT
 D.C.



DELRAY MEDICAL CENTER SITE
 (UNPLATTED)

UNPLATTED



WATER MANAGEMENT TRACT
 (SEE DEDICATION NO. 5 FOR MAINTENANCE OBLIGATION)
 THE WATER MANAGEMENT TRACT IS HEREBY DEDICATED TO, AND SHALL BE THE PERPETUAL MAINTENANCE
 OBLIGATION OF, THE COUNTRY LAKE HOMEOWNERS' ASSOCIATION, INC., ITS SUCCESSORS OR ASSIGNS,
 FOR WATER MANAGEMENT PURPOSES.

NO	BEARING	DISTANCE	NO	BEARING	DISTANCE
T1	S84°52'43"W	26.00	T27	S89°44'25"W	48.21
T2	N43°43'00"E	51.00	T28	N81°15'50"W	69.20
T3	N25°29'00"E	35.05	T29	N89°52'44"E	57.85
T4	N25°29'00"E	35.05	T30	S45°07'10"E	28.28
T5	N61°16'50"W	30.64	T31	N85°52'15"E	37.17
T6	S45°07'10"E	30.48	T32	N00°00'00"E	60.00
T7	N44°52'43"E	15.00	T33	S00°00'15"E	80.00
T8	S44°52'43"E	38.58	T34	N72°25'00"E	37.88
T9	S88°02'18"W	72.00	T35	N53°00'32"E	25.00
T10	S44°52'43"E	80.00	T36	N00°00'30"E	17.16
T11	S07°50'56"E	37.03	T37	S00°00'18"E	80.00
T12	S45°07'10"E	38.08	T38	N00°00'18"W	80.00
T13	N72°25'21"E	26.10	T39	N28°56'00"E	17.16
T14	N78°37'00"W	25.50	T40	S33°19'00"E	25.00
T15	S88°44'25"W	38.22	T41	S72°56'43"E	38.38
T16	N43°43'00"W	38.08	T42	S45°07'10"E	25.00
T17	S88°44'25"W	38.67	T43	N85°52'44"E	60.00
T18	N00°15'35"E	80.00	T44	S45°07'10"E	73.38
T19	N00°15'35"E	80.00	T45	S44°29'22"W	72.93
T20	S85°43'45"W	40.14	T46	N45°45'20"E	73.43
T21	S52°52'14"W	25.00	T47	N44°17'54"E	72.80
T22	N25°29'00"E	21.87	T48	S00°00'45"E	8.84
T23	S07°50'56"E	25.00	T49	N00°15'35"W	13.99
T24	N03°21'37"W	21.87			
T25	N03°21'37"W	25.00			
T26	S72°53'52"W	38.38			

UNPLATTED

NO	DELTA	RADIUS	LENGTH
C1	21°39'35"	414.33	158.63
C2	42°00'00"	114.85	80.21
C3	70°47'52"	35.00	43.25
C4	24°57'27"	162.63	70.84
C5	90°42'07"	89.27	109.66
C6	88°58'40"	71.08	110.38
C7	45°00'00"	82.43	64.74
C8	60°00'00"	61.86	64.89
C9	31°09'39"	68.80	54.38
C10	44°58'58"	178.00	140.58
C11	30°00'00"	95.00	104.98
C12	45°00'00"	174.85	137.33
C13	22°30'00"	387.92	106.03
C14	44°09'38"	142.63	103.03
C15	80°00'00"	37.93	58.60
C16	80°45'00"	68.27	78.00
C17	88°58'40"	51.08	78.33
C18	45°00'00"	62.43	48.03
C19	60°00'00"	41.86	43.84
C20	31°09'39"	48.80	77.64
C21	44°58'58"	159.00	124.87
C22	72°53'43"	71.08	108.54

TYPICAL LOT DIMENSIONS	TYPICAL TRACT DIMENSIONS	TYPICAL TRACT DIMENSIONS
28.57' 28.00'	38.00' 28.00'	28.00' 33.12'

UNPLATTED

Meridian WEST PALM BEACH, FLORIDA
 Surveying and mapping inc.
 DATE: APRIL 1983
 DRAWN BY: J.B.D.
 COUNTY: PALM BEACH
 SECTION: 26, TOWNSHIP: 46 SOUTH,
 RANGE: 42 EAST, PALM BEACH COUNTY, FLORIDA.
 SHEET NO: 166 OF 168

Note: P.O.P.'S SHALL BE SET AT ALL TRACT B INTERSECTIONS.