

45/194

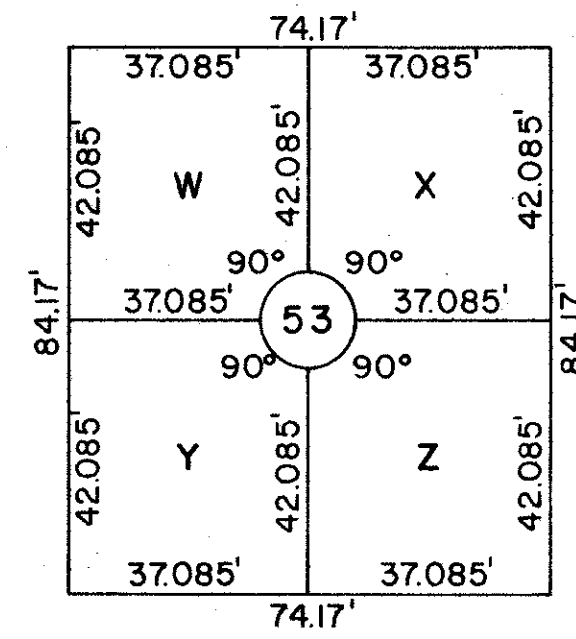
# LAKE COLONY PHASE 3

A PORTION OF THE NORTHEAST 1/4 OF THE SOUTHEAST 1/4 OF SECTION 1,  
TOWNSHIP 44 SOUTH, RANGE 42 EAST, PALM BEACH COUNTY, FLORIDA.  
MAY 1983

STATE OF FLORIDA  
COUNTY OF PALM BEACH  
This plat was filed for record at  
this Day of \_\_\_\_\_, AD  
and duly recorded in Plat Book N  
on Pages \_\_\_\_\_ thru \_\_\_\_\_  
JOHN B. DUNKLE, Clerk  
Circuit Court  
BY: \_\_\_\_\_  
D.C.

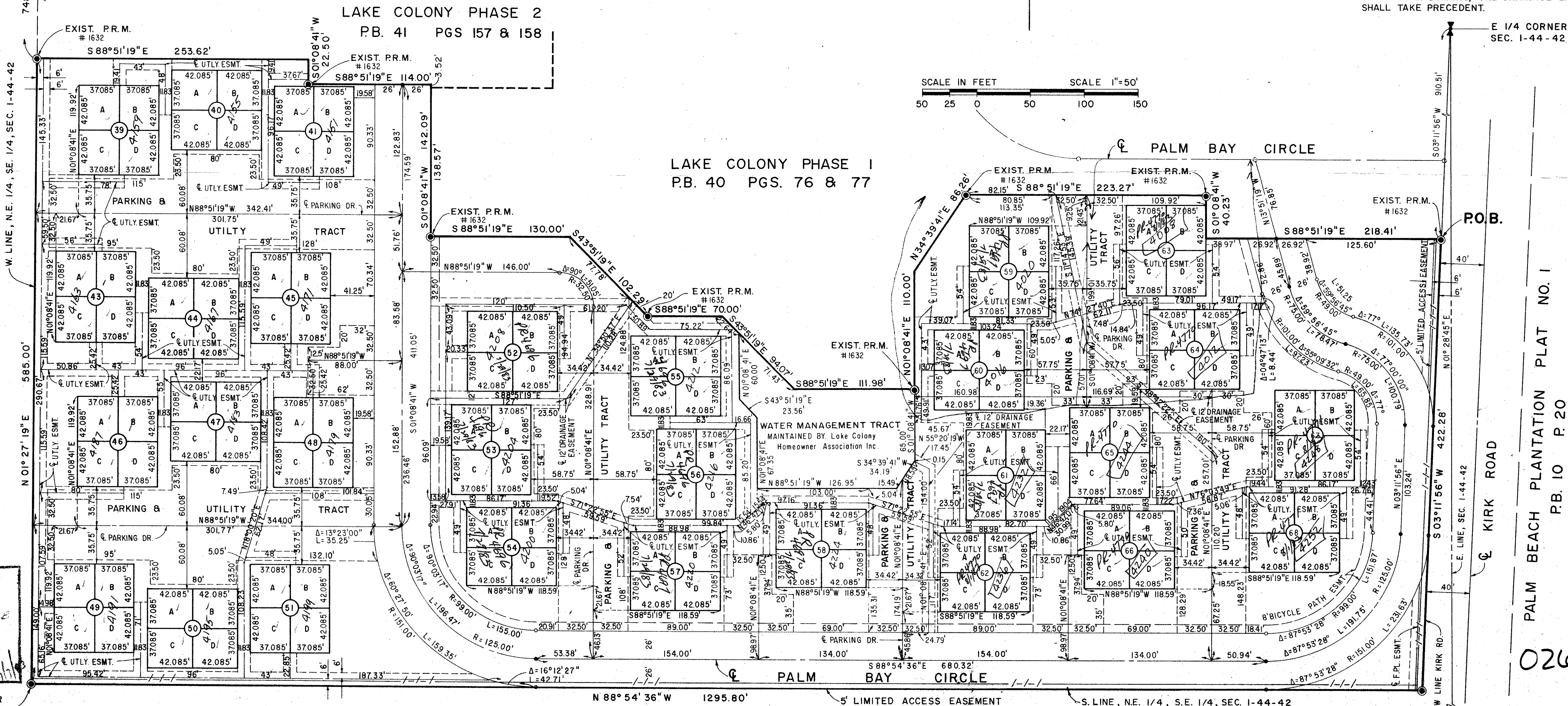
PREPARED BY:  
**METRIC ENGINEERING, INC.**  
CONSULTING ENGINEERS-PLANNERS-SURVEYORS  
11531 SOUTH DIXIE HIGHWAY, MIAMI, FLORIDA  
1490 SOUTH MILITARY TRAIL SUITE 13 WEST PALM BEACH, FLORIDA

- SURVEYOR'S NOTES:
1. ALL LOTS ARE AT RIGHT ANGLES TO THE CENTERLINE OF THE PROPOSED PRIVATE PARKING DRIVE, AS SHOWN, UNLESS OTHERWISE INDICATED.
  2. ALL LOTS ARE 37085 FEET BY 42085 FEET AND ARE RECTANGULAR IN SHAPE
  3. ALL PARKING TRACT DIMENSIONS TO BE PARALLEL OR PERPENDICULAR TO THE PARKING DRIVE UNLESS OTHERWISE SHOWN.
  4. ALL UTILITY EASEMENTS TO BE PARALLEL OR PERPENDICULAR TO LOTS UNLESS OTHERWISE SHOWN
  5. ALL UTILITY EASEMENTS TO BE 12' WIDE UNLESS OTHERWISE SHOWN
  6. WHERE ANY UTILITY EASEMENT CROSSES A DRAINAGE EASEMENT, THE DRAINAGE EASEMENT SHALL TAKE PRECEDENT.



EXIST. P.R.M.  
NE. CORNER  
SKY RANCH

SKY RANCH ESTATES  
P.B. 21 PG. 64



SUBDIVISION #  
BOOK 45  
FLOOD ZONE B  
QUAD 32  
SE N/A  
PUD NAME N/A

PAGE 194  
FLOOD MAP #158  
ZONING RH  
ZIP CODE 33406

SW. CORNER  
N.E. 1/4, S.E. 1/4  
SEC. 1-44-42

LAKE Colony #3 45/194

PALM BEACH PLANTATION PLAT NO. 1  
P.B. 10 P. 20

0260

SHEET N