

45/200

P.U.D.

200

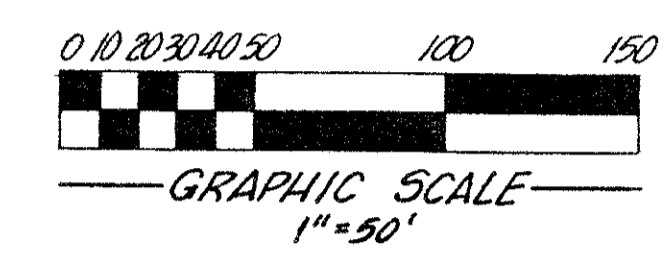
STATE OF FLORIDA
COUNTY OF PALM BEACH
THIS PLAT WAS FILED FOR
RECORD AT _____ DAY OF
AD. 1983 AND DULY RECORDED
IN PLAT BOOK _____ ON PAGES
_____ AND _____
JOHN B. DUNKLE, CLERK
CIRCUIT COURT
BY: _____ DC

CURVE	DELTA	RADIUS	ARC	TANGENT
A	11.00	150.00	81.22	41.63
B	11.00	150.00	81.22	41.63
C	11.00	150.00	81.22	41.63
D	11.00	150.00	81.22	41.63
E	11.00	150.00	81.22	41.63
F	11.00	150.00	81.22	41.63
G	11.00	150.00	81.22	41.63
H	11.00	150.00	81.22	41.63
I	11.00	150.00	81.22	41.63
J	11.00	150.00	81.22	41.63
K	11.00	150.00	81.22	41.63
L	11.00	150.00	81.22	41.63
M	11.00	150.00	81.22	41.63
N	11.00	150.00	81.22	41.63
O	11.00	150.00	81.22	41.63
P	11.00	150.00	81.22	41.63
Q	11.00	150.00	81.22	41.63
R	11.00	150.00	81.22	41.63
S	11.00	150.00	81.22	41.63
T	11.00	150.00	81.22	41.63
U	11.00	150.00	81.22	41.63
V	11.00	150.00	81.22	41.63
W	11.00	150.00	81.22	41.63
X	11.00	150.00	81.22	41.63
Y	11.00	150.00	81.22	41.63
Z	11.00	150.00	81.22	41.63
AA	11.00	150.00	81.22	41.63
AB	11.00	150.00	81.22	41.63
AC	11.00	150.00	81.22	41.63
AD	11.00	150.00	81.22	41.63
AE	11.00	150.00	81.22	41.63
AF	11.00	150.00	81.22	41.63
AG	11.00	150.00	81.22	41.63
AH	11.00	150.00	81.22	41.63
AI	11.00	150.00	81.22	41.63
AJ	11.00	150.00	81.22	41.63
AK	11.00	150.00	81.22	41.63
AL	11.00	150.00	81.22	41.63
AM	11.00	150.00	81.22	41.63
AN	11.00	150.00	81.22	41.63
AO	11.00	150.00	81.22	41.63

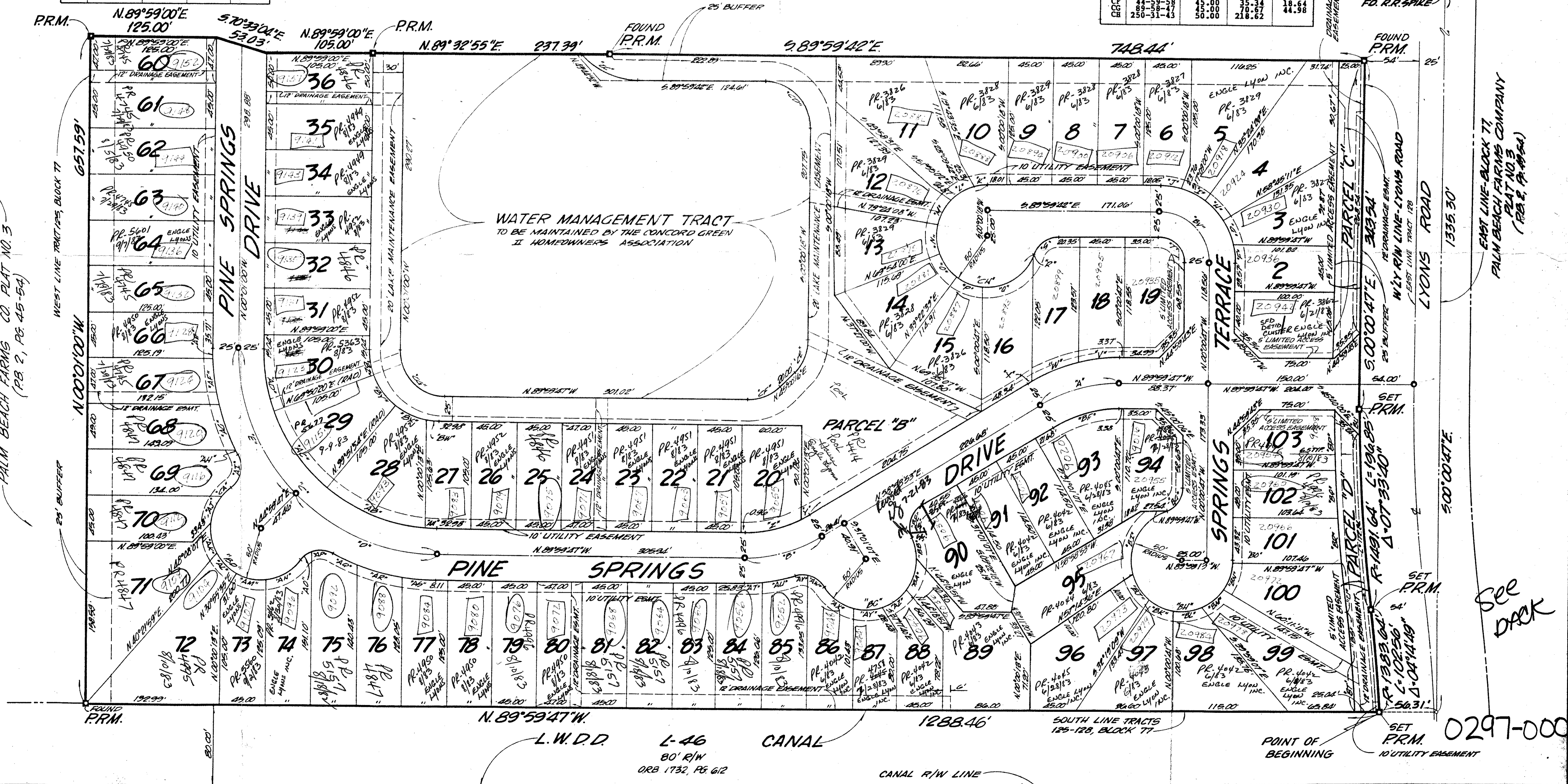
PINE SPRINGS
PLAT NO. 1
A RESUBDIVISION OF A PORTION OF BLOCK 77,
PALM BEACH FARMS COMPANY, PLAT NO. 3, (P. B. 2, Pp. 45-54)
IN SECTIONS 18 & 19, TOWNSHIP 47 SOUTH, RANGE 42 EAST,
PALM BEACH COUNTY, FLORIDA



SHEET 2 of 2
APRIL 1983



CURVE	DELTA	RADIUS	ARC	TANGENT
AA	11.00	150.00	81.22	41.63
AB	11.00	150.00	81.22	41.63
AC	11.00	150.00	81.22	41.63
AD	11.00	150.00	81.22	41.63
AE	11.00	150.00	81.22	41.63
AF	11.00	150.00	81.22	41.63
AG	11.00	150.00	81.22	41.63
AH	11.00	150.00	81.22	41.63
AI	11.00	150.00	81.22	41.63
AJ	11.00	150.00	81.22	41.63
AK	11.00	150.00	81.22	41.63
AL	11.00	150.00	81.22	41.63
AM	11.00	150.00	81.22	41.63
AN	11.00	150.00	81.22	41.63
AO	11.00	150.00	81.22	41.63
AP	11.00	150.00	81.22	41.63
AQ	11.00	150.00	81.22	41.63
AR	11.00	150.00	81.22	41.63
AS	11.00	150.00	81.22	41.63
AT	11.00	150.00	81.22	41.63
AU	11.00	150.00	81.22	41.63
AV	11.00	150.00	81.22	41.63
AW	11.00	150.00	81.22	41.63
AX	11.00	150.00	81.22	41.63
AY	11.00	150.00	81.22	41.63
AZ	11.00	150.00	81.22	41.63
BA	11.00	150.00	81.22	41.63
BB	11.00	150.00	81.22	41.63
BC	11.00	150.00	81.22	41.63
BD	11.00	150.00	81.22	41.63
BE	11.00	150.00	81.22	41.63
BF	11.00	150.00	81.22	41.63
BG	11.00	150.00	81.22	41.63
BH	11.00	150.00	81.22	41.63
BI	11.00	150.00	81.22	41.63
BJ	11.00	150.00	81.22	41.63
BK	11.00	150.00	81.22	41.63
BL	11.00	150.00	81.22	41.63
BM	11.00	150.00	81.22	41.63
BN	11.00	150.00	81.22	41.63
BO	11.00	150.00	81.22	41.63
BP	11.00	150.00	81.22	41.63
BQ	11.00	150.00	81.22	41.63
BR	11.00	150.00	81.22	41.63
BS	11.00	150.00	81.22	41.63
BT	11.00	150.00	81.22	41.63
BU	11.00	150.00	81.22	41.63
BV	11.00	150.00	81.22	41.63
BW	11.00	150.00	81.22	41.63
BX	11.00	150.00	81.22	41.63
BY	11.00	150.00	81.22	41.63
BZ	11.00	150.00	81.22	41.63
CA	11.00	150.00	81.22	41.63
CB	11.00	150.00	81.22	41.63
CC	11.00	150.00	81.22	41.63
CD	11.00	150.00	81.22	41.63
CE	11.00	150.00	81.22	41.63
CF	11.00	150.00	81.22	41.63
CG	11.00	150.00	81.22	41.63
CH	11.00	150.00	81.22	41.63
CI	11.00	150.00	81.22	41.63
CJ	11.00	150.00	81.22	41.63
CK	11.00	150.00	81.22	41.63
CL	11.00	150.00	81.22	41.63
CM	11.00	150.00	81.22	41.63
CN	11.00	150.00	81.22	41.63
CO	11.00	150.00	81.22	41.63
CP	11.00	150.00	81.22	41.63
CQ	11.00	150.00	81.22	41.63
CR	11.00	150.00	81.22	41.63
CS	11.00	150.00	81.22	41.63
CT	11.00	150.00	81.22	41.63
CU	11.00	150.00	81.22	41.63
CV	11.00	150.00	81.22	41.63
CW	11.00	150.00	81.22	41.63
CX	11.00	150.00	81.22	41.63
CY	11.00	150.00	81.22	41.63
CZ	11.00	150.00	81.22	41.63



PALM BEACH FARMS CO PLAT NO. 3
(P.B. 2, Pp. 45-54)

EAST LINE-BLOCK 77
PALM BEACH FARMS COMPANY
(P.B. 1, Pp. 45-54)

See DRK

0297-000

BENCH MARK
land surveying and mapping, inc.
WEST PALM BEACH, FLORIDA