

46/40

46/40

BOCAIRE GOLF CLUB NO. 2

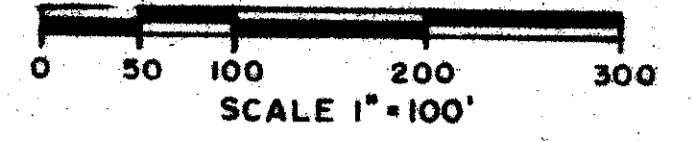
A PLAT OF A PORTION OF SECTION 36, TOWNSHIP 46 SOUTH, RANGE 42 EAST

JOHN A. GRANT, JR., INC.

CONSULTING ENGINEERS AND LAND SURVEYORS

BOCA RATON, FLORIDA

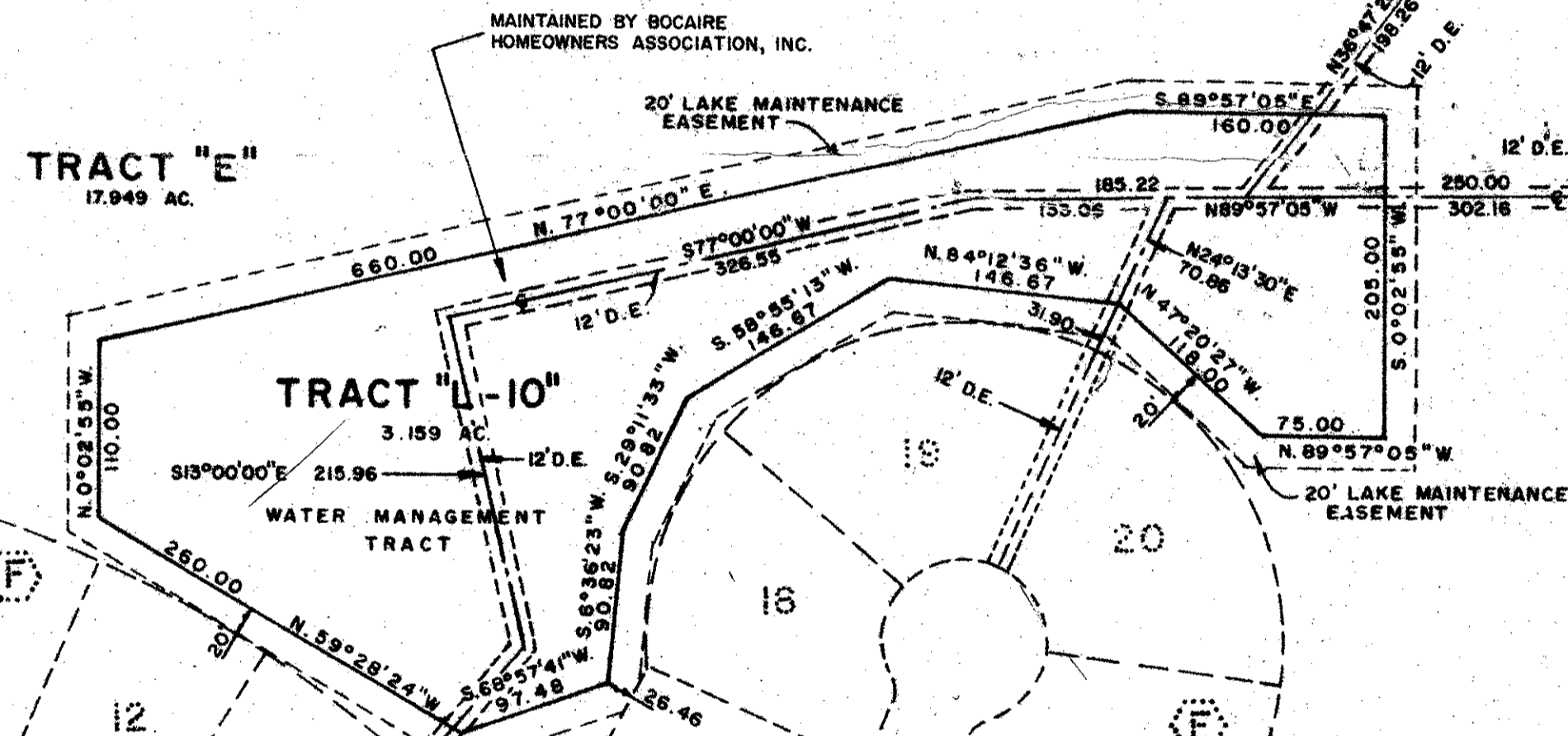
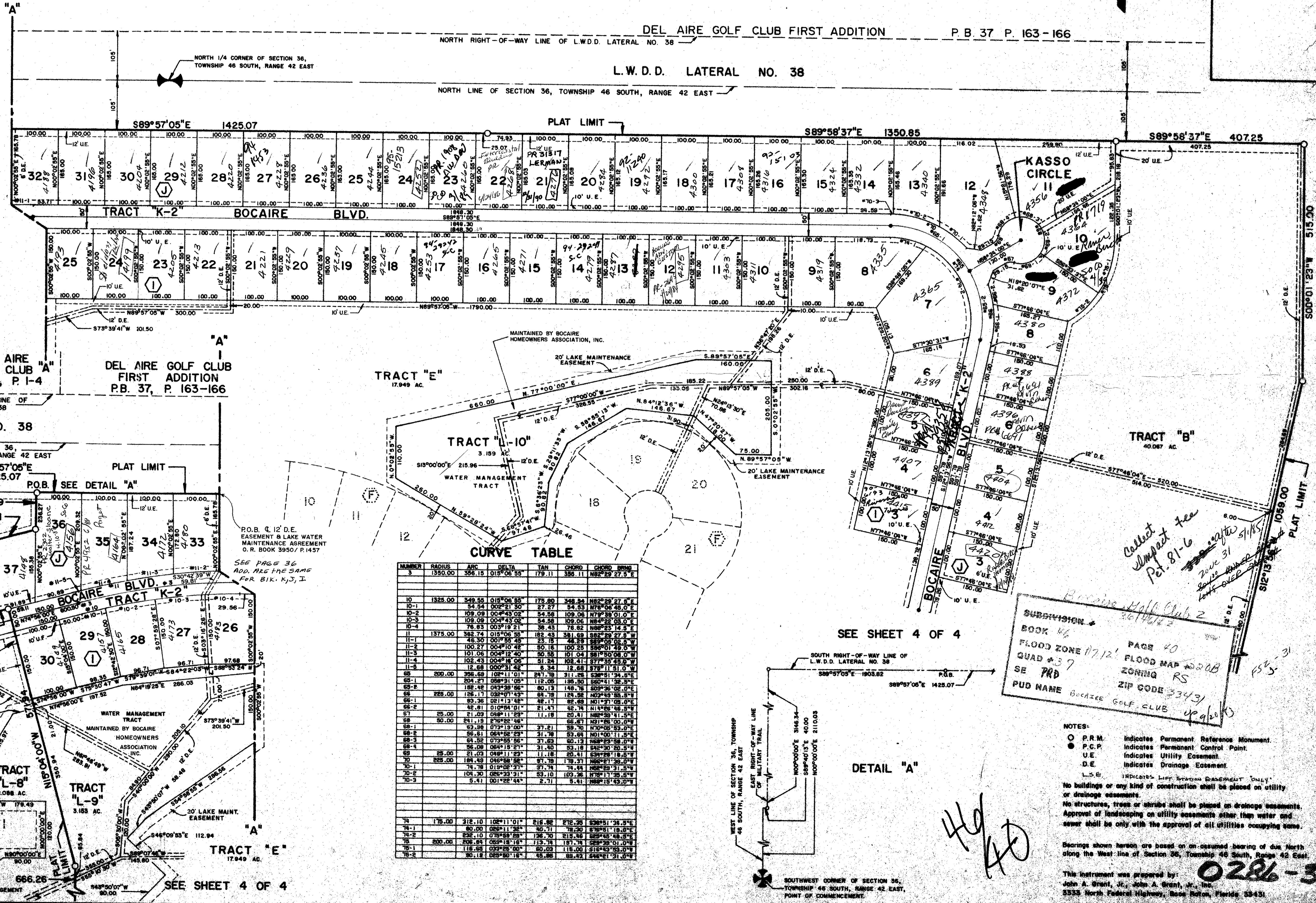
JANUARY 1983
SHEET 3 OF 4



DEL AIRE GOLF CLUB FIRST ADDITION P.B. 37 P. 163-166

L.W.D.D. LATERAL NO. 38

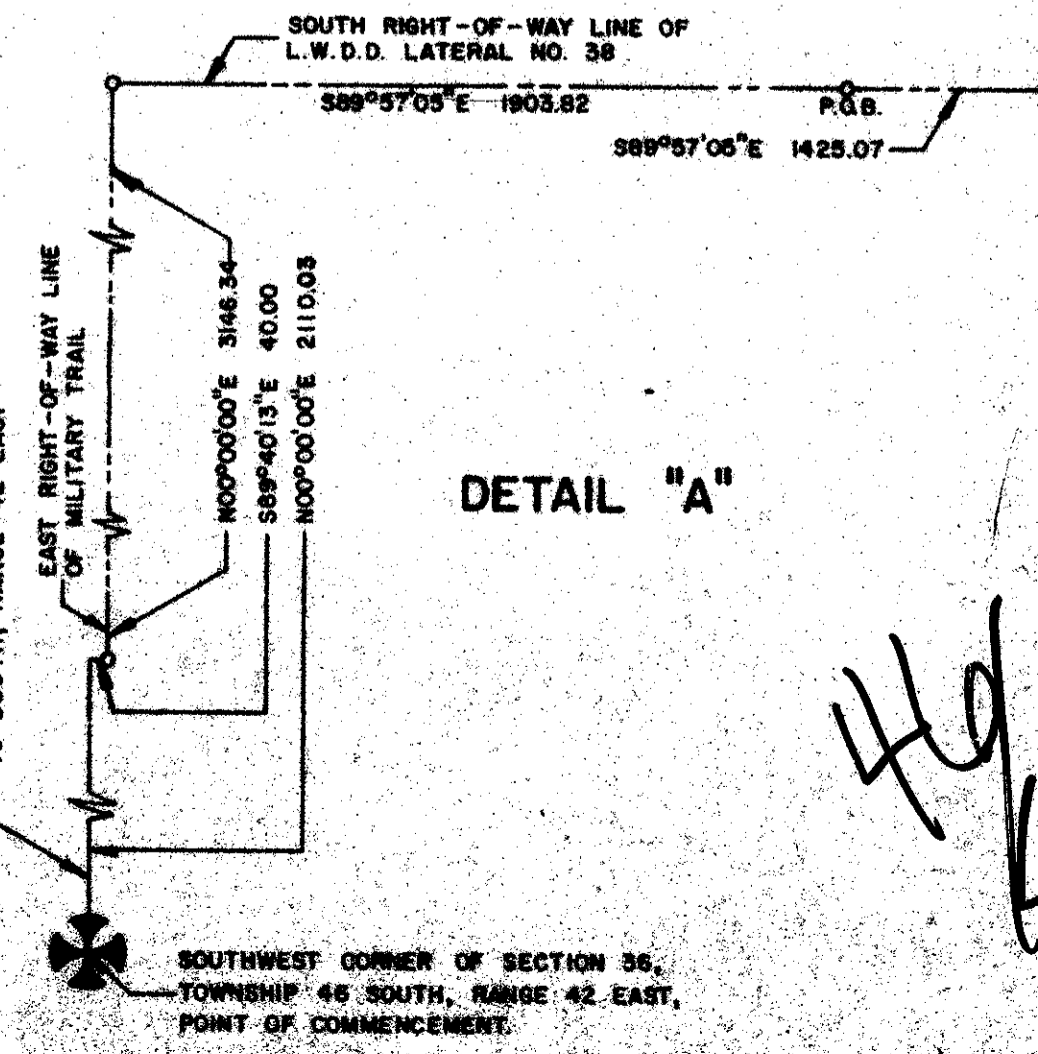
NORTH LINE OF SECTION 36, TOWNSHIP 46 SOUTH, RANGE 42 EAST



CURVE TABLE

NUMBER	RADIUS	ARC	DELTA	TAN	CHORD	CHORD BEING
3	1350.00	396.15	015°06'55"	179.11	396.11	N89°29'27.5"E
10	1325.00	349.55	018°06'55"	175.60	348.54	N82°28'21.6"E
10-1		54.94	002°21'50"	27.27	54.53	N76°06'48.0"E
10-2		109.09	004°43'02"	54.56	109.06	N79°28'01.0"E
10-3		163.63	006°43'02"	81.83	163.62	N82°28'03.0"E
10-4		218.18	008°43'02"	109.06	218.15	N85°28'05.0"E
11	1375.00	562.74	018°06'55"	382.43	562.72	N82°28'05.0"E
11-1		46.30	001°55'45"	23.18	46.29	N89°02'02.5"W
11-2		100.27	004°10'48"	50.18	100.25	S89°01'49.0"W
11-3		154.35	006°30'40"	75.59	154.34	S89°02'08.0"W
11-4		208.43	008°43'02"	101.94	208.41	S89°02'27.0"W
11-5		262.51	010°43'02"	128.95	262.49	S89°02'46.0"W
65	200.00	396.59	102°11'01"	247.19	311.28	S89°51'34.0"E
65-1		204.21	089°31'05"	112.05	185.50	S80°41'38.5"E
65-2		188.82	084°58'55"	60.13	149.76	S80°36'02.0"E
65-3		173.43	080°26'45"	64.78	124.26	N02°53'55.5"E
65-4		93.36	021°12'48"	48.17	82.69	N01°21'08.0"E
65-5		42.81	010°04'01"	21.47	42.74	N14°58'48.5"E
65-6		21.03	048°11'25"	11.18	20.41	N89°59'31.5"E
65-7		5.41	001°22'44"	2.71	5.41	N89°19'43.0"E
74	175.00	312.10	102°11'01"	216.92	272.26	S89°51'34.5"E
74-1		80.00	089°11'34"	40.71	78.30	S78°51'18.0"E
74-2		120.10	078°44'21"	126.70	115.80	S81°48'48.5"E
74-3		160.20	068°15'21"	153.78	137.18	S84°28'01.0"E
74-4		200.30	058°00'00"	181.00	165.00	S87°00'00.0"E
74-5		240.40	048°00'00"	208.00	188.00	S89°00'00.0"E
74-6		280.50	038°00'00"	235.00	211.00	S91°00'00.0"E
74-7		320.60	028°00'00"	262.00	234.00	S93°00'00.0"E
74-8		360.70	018°00'00"	289.00	257.00	S95°00'00.0"E

SEE SHEET 4 OF 4



Collect Impact Fee
Per. 81-6
2006-31
Bocaire Golf Club 2
36/1402
PAGE 40
FLOOD ZONE 17.12' FLOOD MAP 2008
QUAD #37 ZONING RS
SE PRD ZIP CODE 33433
PUD NAME BOCAIRE GOLF CLUB 4/2/83

NOTES:

- P.R.M. Indicates Permanent Reference Monument.
- P.C.P. Indicates Permanent Control Point.
- U.E. Indicates Utility Easement.
- D.E. Indicates Drainage Easement.
- L.S.E. INDICATES LIFE EASEMENT ONLY

No buildings or any kind of construction shall be placed on utility or drainage easements.
No structures, trees or shrubs shall be placed on drainage easements.
Approval of landscaping on utility easements other than water and sewer shall be only with the approval of all utilities occupying same.

Bearings shown herein are based on an assumed bearing of due North along the West line of Section 36, Township 46 South, Range 42 East.

This instrument was prepared by:
John A. Grant, Jr., John A. Grant, Jr., Inc.
3333 North Federal Highway, Boca Raton, Florida 33431

0286-302