

46/48

B zone

# BOCA GLADES NO.1, A P.U.D.

SITUATE IN SECTION 17, TOWNSHIP 47, SOUTH, RANGE 42 EAST, PALM BEACH COUNTY, FLORIDA, BEING A REPLAT OF A PORTION OF BLOCK 76 OF THE PALM BEACH FARMS COMPANY'S PLAT NO. 3 (P.B. 2, PGS. 45-54)

48

STATE OF FLORIDA  
COUNTY OF PALM BEACH  
THIS PLAT WAS FILED FOR RECORD AT THIS DAY OF APRIL, 1983 AND DULY RECORDED IN PLAT BOOK ON PAGES AND  
JOHN B. DUNKLE, CLERK  
CIRCUIT COURT  
BY: \_\_\_\_\_, D.C.

L.W.D.D. CANAL L-45

APRIL, 1983

SHEET 2 OF 2

30' PALM BEACH FARMS PLATTED R/W

NORTH LINE TRACTS 40 THRU 43

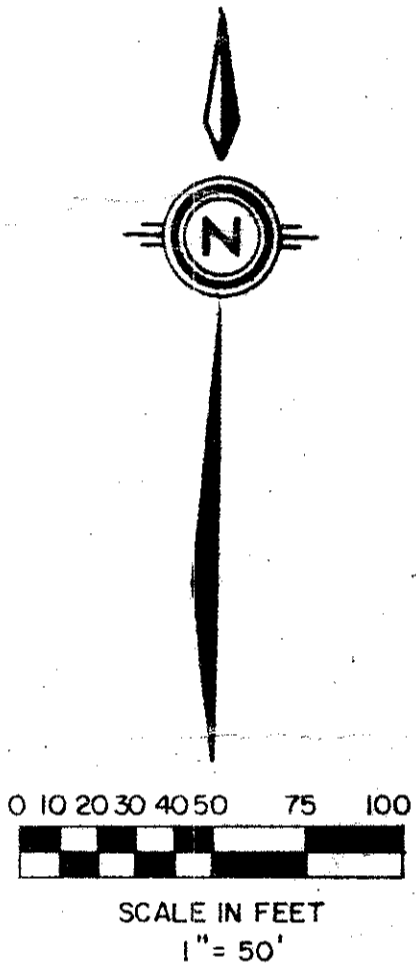
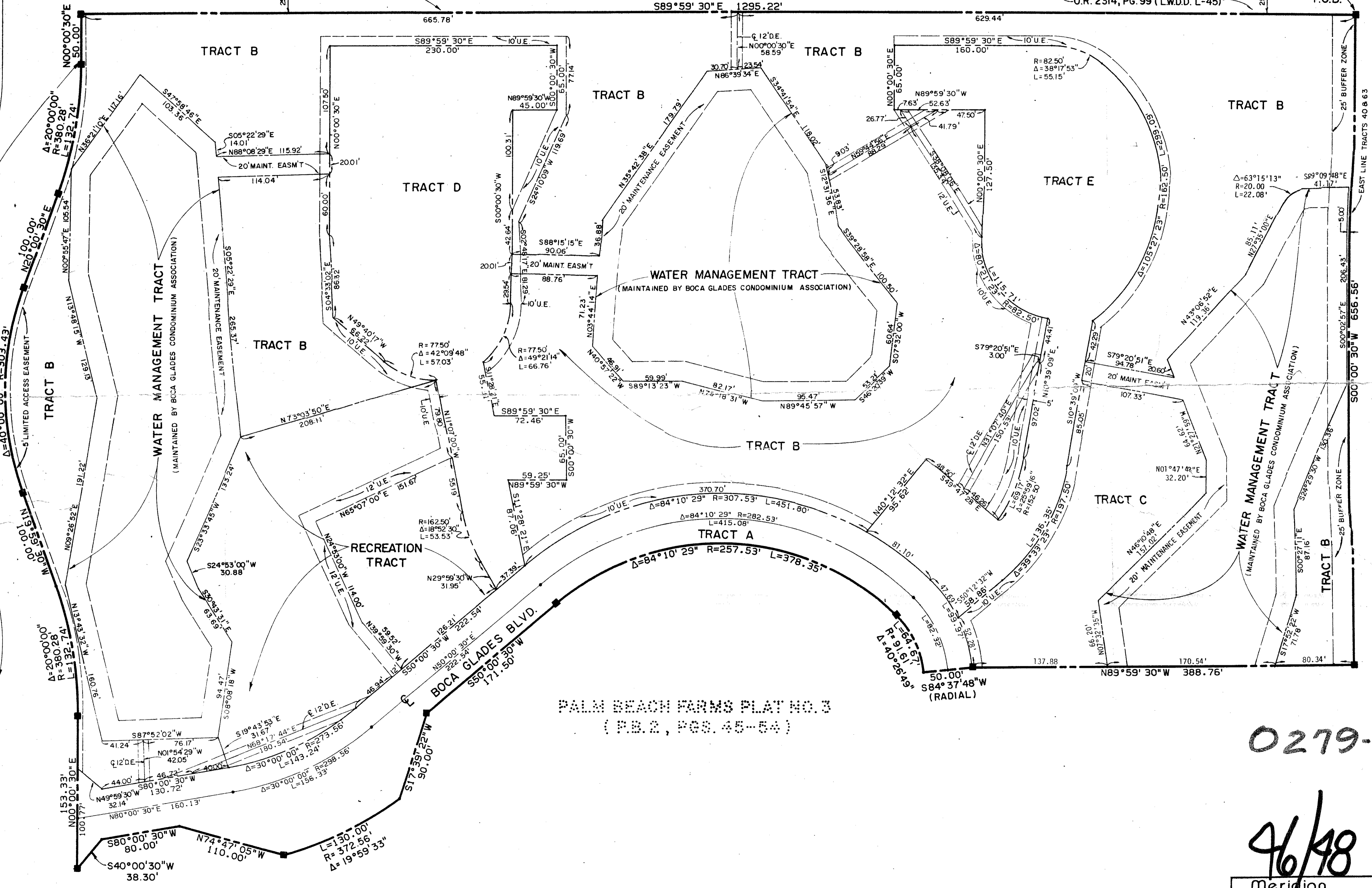
O.R. 2314, PG. 99 (L.W.D.D. L-45)

P.O.B.

P.B. 2, PGS. 45-54

80' R/W GOLF COURSE RD. (O.R. 3593, PGS. 97-199)

PALM BEACH FARMS PLAT NO. 3



PALM BEACH FARMS PLAT NO. 3 (P.B. 2, PGS. 45-54)

0279-000

46/48

Meridian		WEST PALM BEACH, FLORIDA	
Surveying and mapping inc.			
DRAWN	DATE		
M.E.H.	APRIL 1983		
CHECKED	SCALE		
	1" = 50'	BOCA GLADES NO.1, A P.U.D.	
DRAWING NO.	82-P-080		