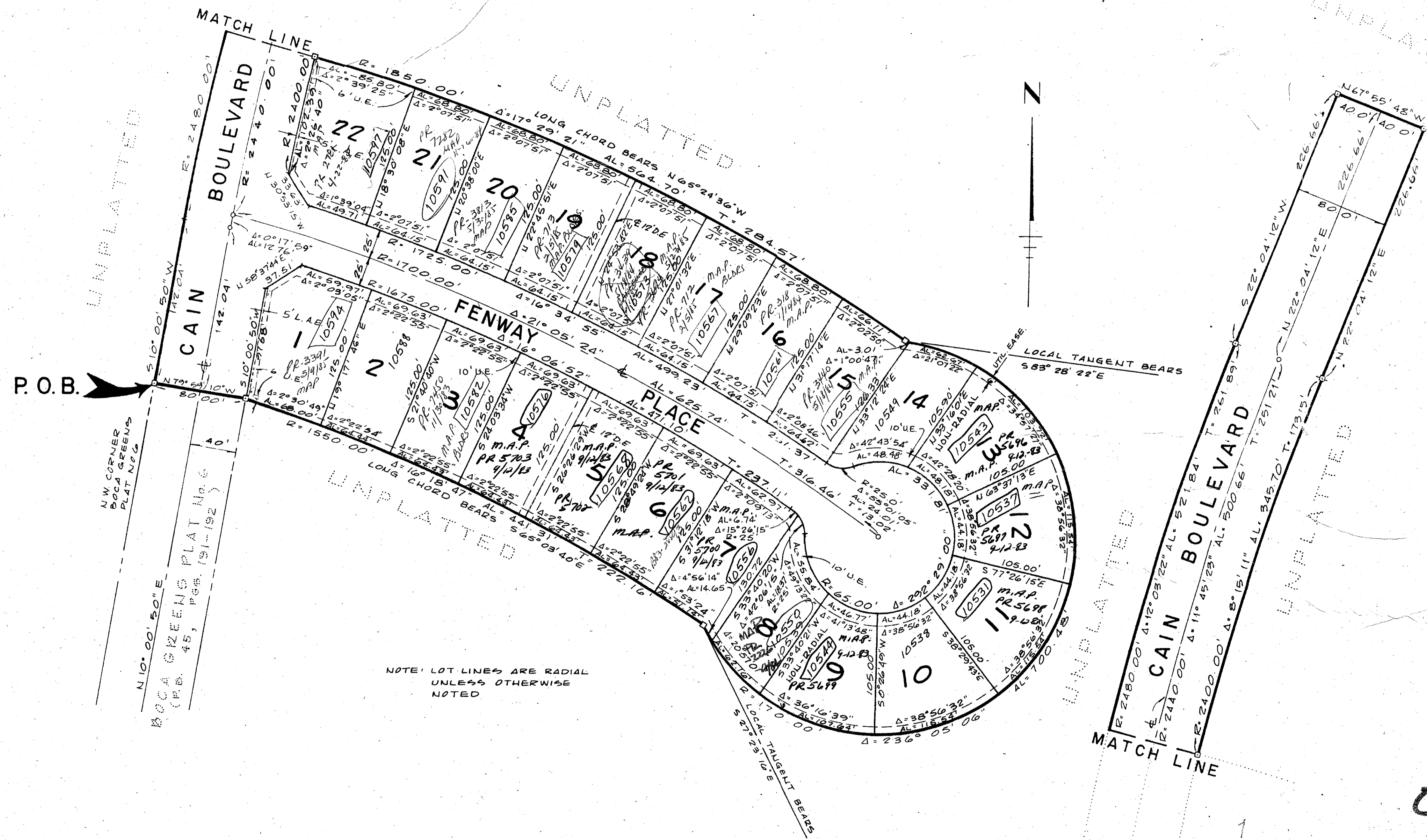


46/57

A PLANNED UNIT DEVELOPMENT  
**BOCA GREENS PLAT NO. 7**  
 BEING A SUBDIVISION OF LAND  
 IN SECTION 12, TOWNSHIP 47 SOUTH, RANGE 41 EAST  
 PALM BEACH COUNTY, FLORIDA

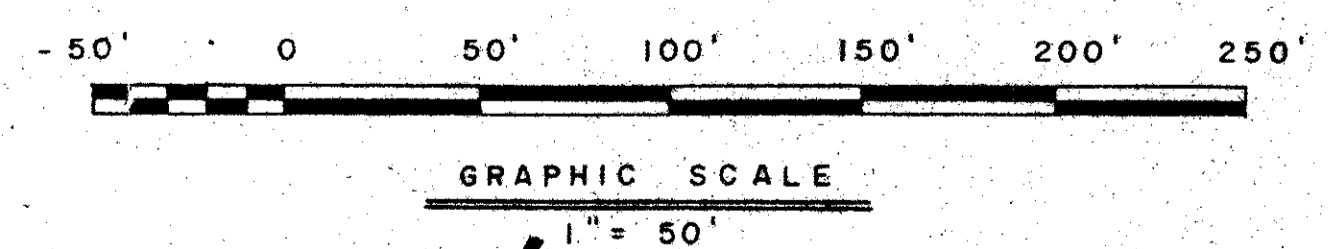
SHEET 2 OF 2



NOTE: LOT LINES ARE RADIAL  
 UNLESS OTHERWISE  
 NOTED

*Boca Greens 7*  
 12/47/41  
 BOOK 46 PAGE 57  
 ROAD ROWS B PLATS AND #100B  
 ROAD #68 REMAIN  
 PUB NAME RP CORP 33434

0208-301



TURNOUT REQUIRED  
 SFD Det'd. Cl.  
 12/47/41  
 RE-PUD  
 FS2-32  
 F2-NO  
 Insp. AREA 10

46/57

Field Book No. D-102 Pg. 75	ROBERT E. OWEN & ASSOCIATES, INC. ENGINEERS - PLANNERS - SURVEYORS WEST PALM BEACH FLORIDA	A P.U.D. <b>BOCA GREENS PLAT No. 7</b>	Job No. 81-051
Field: H. WILLIAMS			Scale 1" = 50'
Drawn R. Busutil			Date MAY, 1983
Checked P. T. Krick			Sheet 2 of 2
			PL No. BF-2328B