

46/101

101

COUNTRYPARK AT BOCA RATON, I

PART OF BOCA RIO, A P.U.D.

BEING A PORTION OF THE NORTHEAST ONE QUARTER OF SECTION 32, TOWNSHIP 47 SOUTH, RANGE 42 EAST, PALM BEACH COUNTY, FLORIDA.

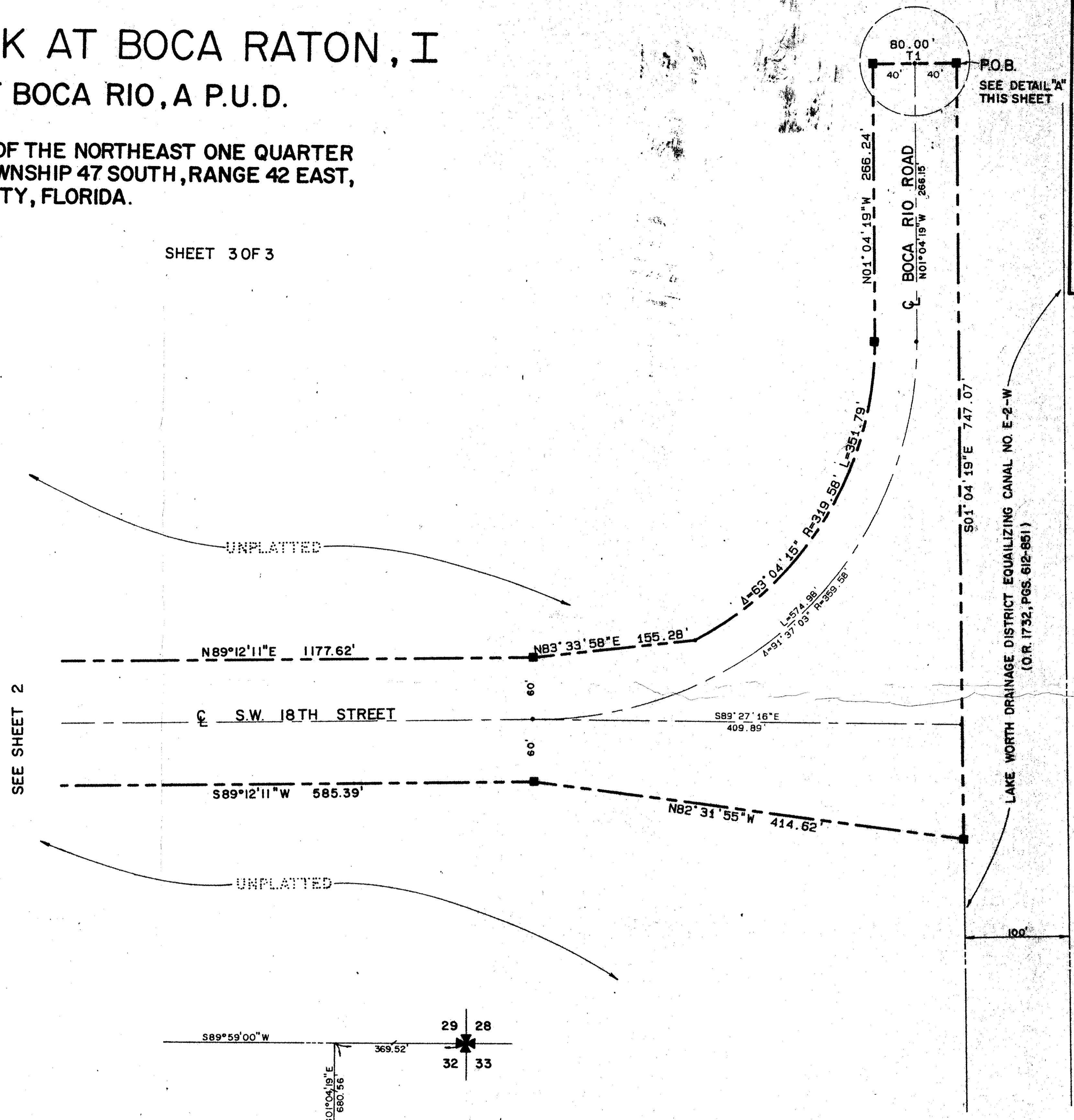
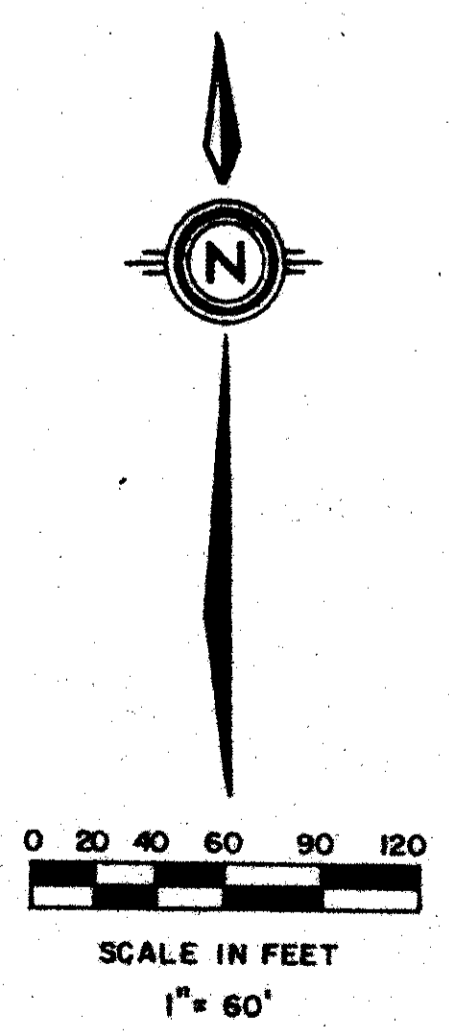
JULY, 1983

SHEET 3 OF 3

STATE OF FLORIDA
 COUNTY OF PALM BEACH
 THIS PLAT WAS FILED FOR RECORD AT THIS DAY OF AD, 1983 AND DULY RECORDED IN PLAT BOOK ON PAGES AND
 JOHN B. DUNKLE, CLERK
 CIRCUIT COURT
 BY: , D.C.

| CURVE TABLE | | | |
|-------------|-------------|---------|--------|
| NO. | DELTA | RADIUS | LENGTH |
| C1 | 89° 30' 26" | 103.75 | 162.07 |
| C2 | 13° 41' 42" | 641.63 | 153.36 |
| C3 | 23° 48' 01" | 237.97 | 98.85 |
| C4 | 45° 00' 00" | 71.34 | 56.03 |
| C5 | 45° 00' 00" | 64.28 | 50.48 |
| C6 | 1° 22' 59" | 641.63 | 15.49 |
| C7 | 7° 36' 13" | 237.97 | 31.58 |
| C8 | 2° 24' 57" | 474.47 | 20.01 |
| C9 | 2° 43' 15" | 252.97 | 12.01 |
| C10 | 4° 56' 28" | 317.95 | 27.42 |
| C11 | 1° 39' 42" | 1026.63 | 29.77 |
| C12 | 1° 50' 28" | 926.63 | 29.78 |
| C13 | 0° 38' 11" | 756.63 | 8.62 |
| C14 | 0° 52' 35" | 1026.63 | 15.70 |
| C15 | 1° 41' 15" | 79.28 | 2.34 |
| C16 | 45° 00' 00" | 35.86 | 28.16 |
| C17 | 4° 12' 35" | 474.47 | 34.86 |
| C18 | 3° 10' 57" | 516.47 | 28.89 |
| C19 | 4° 17' 48" | 516.47 | 38.73 |
| C20 | 1° 36' 52" | 1056.63 | 28.77 |
| C21 | 7° 27' 54" | 317.95 | 41.43 |
| C22 | 2° 04' 10" | 1056.63 | 38.17 |
| C23 | 0° 33' 58" | 152.41 | 1.51 |
| C24 | 3° 54' 56" | 474.47 | 32.43 |
| C25 | 3° 27' 13" | 516.47 | 31.13 |
| C26 | 0° 09' 39" | 626.63 | 1.76 |
| C27 | 10° 40' 29" | 49.28 | 9.18 |
| C28 | 34° 19' 31" | 49.28 | 29.52 |

| TANGENT TABLE | | |
|---------------|----------------|----------|
| NO. | BEARING | DISTANCE |
| T1 | N89° 03' 19" E | 80.00 |
| T2 | S44° 12' 11" W | 35.36 |
| T3 | N89° 41' 45" E | 46.00 |
| T4 | S00° 18' 15" E | 69.00 |
| T5 | S89° 41' 45" W | 10.00 |
| T6 | S47° 33' 47" E | 8.88 |
| T7 | N89° 41' 45" E | 46.00 |
| T8 | S44° 41' 45" W | 35.36 |
| T9 | S00° 18' 15" E | 2.00 |
| T10 | N00° 18' 15" W | 9.31 |
| T11 | N45° 18' 15" W | 35.66 |
| T12 | N45° 47' 49" W | 35.66 |
| T13 | S42° 26' 13" W | 35.36 |
| T14 | S02° 33' 47" E | 2.44 |
| T15 | N87° 26' 13" E | 14.93 |
| T16 | N52° 58' 36" E | 16.98 |
| T17 | S47° 33' 47" E | 35.36 |
| T18 | N89° 12' 11" E | 2.00 |
| T19 | N44° 12' 11" E | 35.36 |
| T20 | N45° 47' 49" W | 38.38 |
| T21 | N44° 12' 11" E | 35.36 |
| T22 | N45° 47' 49" W | 35.36 |
| T23 | S88° 16' 32" E | 33.44 |
| T24 | S52° 05' 12" W | 19.89 |
| T25 | N45° 47' 49" W | 21.21 |
| T26 | S45° 47' 49" E | 14.64 |
| T27 | S44° 12' 11" W | 21.21 |
| T28 | S89° 12' 11" W | 30.23 |
| T29 | S89° 12' 11" W | 9.26 |
| T30 | S43° 33' 59" W | 20.79 |
| T31 | N45° 18' 15" W | 21.21 |
| T32 | S44° 41' 45" W | 21.21 |
| T33 | N45° 18' 15" W | 35.36 |
| T34 | S44° 41' 45" W | 35.36 |
| T35 | N45° 26' 01" W | 21.63 |
| T36 | N47° 33' 47" W | 8.88 |
| T37 | N89° 12' 11" E | 21.31 |
| T38 | N45° 47' 49" W | 21.21 |
| T39 | S44° 12' 11" W | 21.21 |
| T40 | N44° 12' 11" E | 21.21 |
| T41 | S45° 47' 49" E | 21.21 |
| T42 | N49° 21' 37" E | 31.48 |
| T43 | N47° 33' 47" W | 6.85 |
| T44 | S41° 48' 24" E | 25.30 |
| T45 | N43° 19' 12" E | 20.88 |
| T46 | N47° 33' 47" W | 21.21 |
| T47 | N42° 26' 13" E | 21.21 |
| T48 | N42° 26' 13" E | 21.21 |
| T49 | N47° 33' 47" W | 21.21 |
| T50 | S42° 26' 13" W | 21.21 |
| T51 | N42° 26' 13" E | 21.21 |
| T52 | N48° 26' 01" W | 21.63 |
| T53 | S43° 33' 59" W | 20.79 |
| T54 | N89° 41' 45" E | 30.00 |



SEE SHEET 2



DETAIL "A"

0213-001

46/101

Meridian Surveying and mapping inc. WEST PALM BEACH, FLORIDA

| | | | |
|-------------|----------|-------|------------|
| DRAWN | M.E.H. | DATE | JUNE, 1983 |
| CHECKED | | SCALE | 1" = 60' |
| DRAWING NO. | 83-P-029 | | |

COUNTRYPARK AT BOCA RATON, I
 PART OF BOCA RIO, A P.U.D.