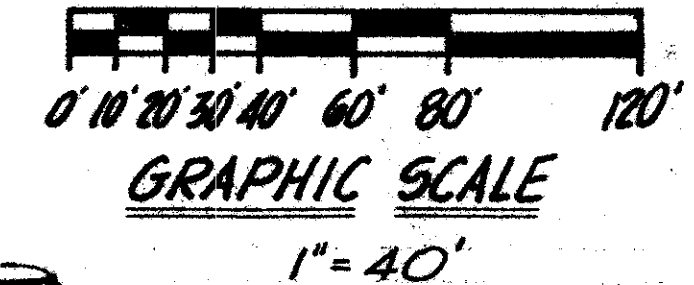


46/116

# A PART OF HAMLET V, BOCA WEST-P.U.D. CYPRESS WALK AT BOCA WEST

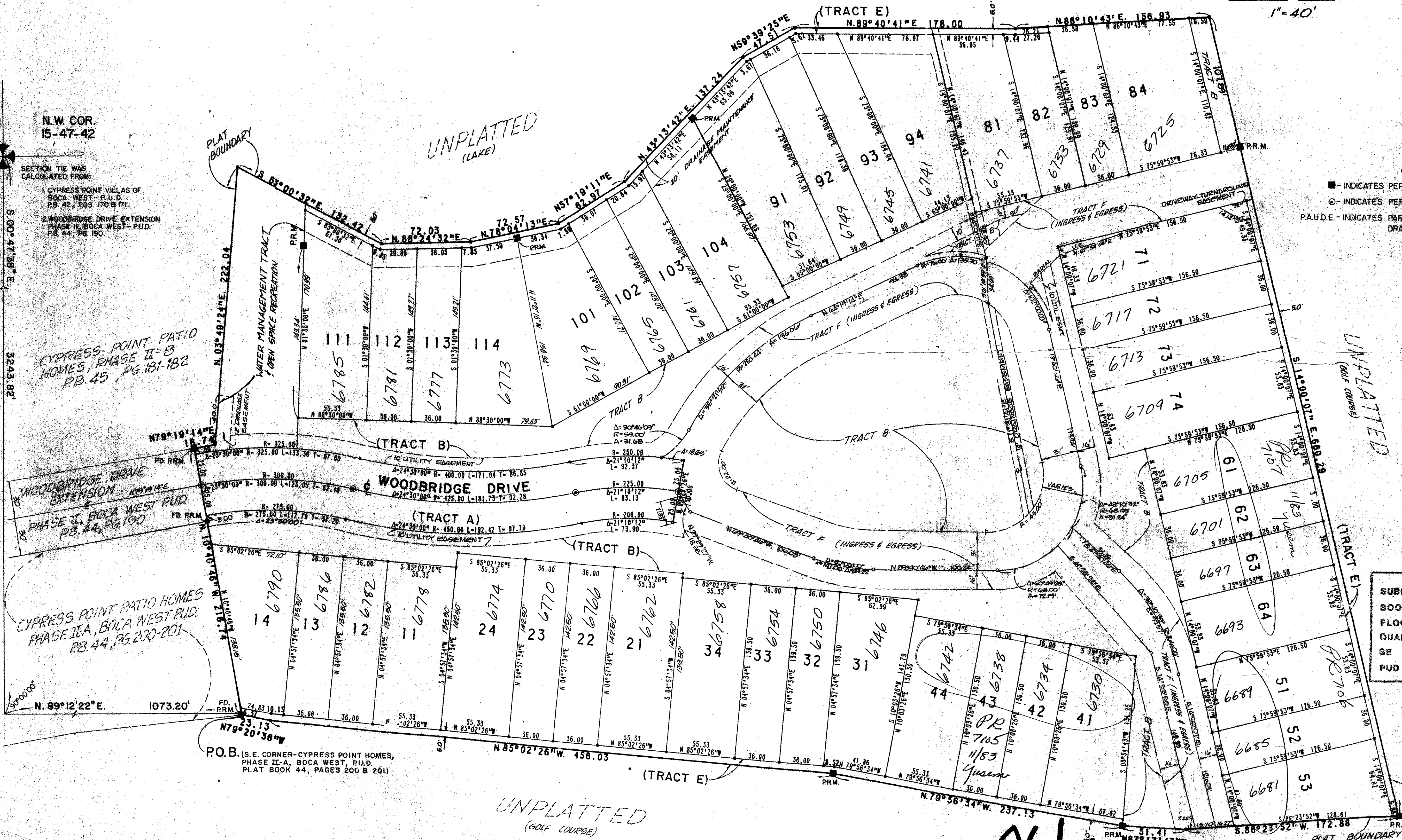
LYING IN PART OF SECTION 15, TOWNSHIP 47 SOUTH, RANGE 42 EAST,  
PALM BEACH COUNTY, FLORIDA

SHEET 2 OF 2 --- JUNE 1983



116

STATE OF FLORIDA  
COUNTY OF PALM BEACH  
THIS PLAT WAS FILED FOR  
RECORD AT \_\_\_\_\_  
THIS \_\_\_\_\_ DAY OF \_\_\_\_\_  
A.D. 1983, AND DULY RE-  
CORDED IN PLAT BOOK  
ON PAGES \_\_\_\_\_ AND \_\_\_\_\_  
JOHN B. DUNKLE, CLERK  
CIRCUIT COURT  
BY: \_\_\_\_\_



### LEGEND

- INDICATES PERMANENT REFERENCE MONUMENT
- INDICATES PERMANENT CONTROL POINT
- PA.U.D.E. INDICATES PARKING ACCESS, UTILITY AND DRAINAGE EASEMENTS.

SUBDIVISION #  
BOOK 40  
FLOOD ZONE B  
QUAD # 38  
SE  
PUD NAME Cypress Walk @ Boca West

PAGE 16  
FLOOD MAP # 2308  
ZONING RS-Pud  
ZIP CODE 33431

0214-020

N.W. COR.  
15-47-42

SECTION TIE WAS  
CALCULATED FROM:  
1. CYPRESS POINT VILLAS OF  
BOCA WEST - P.U.D.  
PB. 42, PGS. 170 & 171  
2. WOODBRIDGE DRIVE EXTENSION  
PHASE II, BOCA WEST - P.U.D.  
PB. 44, PG. 190

CYPRESS POINT PATIO  
HOMES, PHASE II - B  
PB. 45, PGS. 181-182

CYPRESS POINT PATIO HOMES  
PHASE II-A, BOCA WEST P.U.D.  
PB. 44, PGS. 200-201

P.O.B. (S.E. CORNER-CYPRESS POINT HOMES,  
PHASE II-A, BOCA WEST, P.U.D.  
PLAT BOOK 44, PAGES 200 & 201)

UNPLATTED  
(GOLF COURSE)

UNPLATTED  
(GOLF COURSE)

46/116

CONRARD SCHAEFER CONSULTING ENGINEERS, INC.  
CYPRESS WALK  
AT BOCA WEST

**BENCH MARK**  
land surveying and mapping, inc.  
WEST PALM BEACH, FLORIDA

THIS INSTRUMENT WAS PREPARED BY DAN CONKLIN AND TERRY OSBORNE IN THE  
OFFICES OF BENCHMARK LAND SURVEYING AND MAPPING, INC., 2833 EXCHANGE  
COURT, WEST PALM BEACH, FLORIDA. TELEPHONE: 305-689-2111