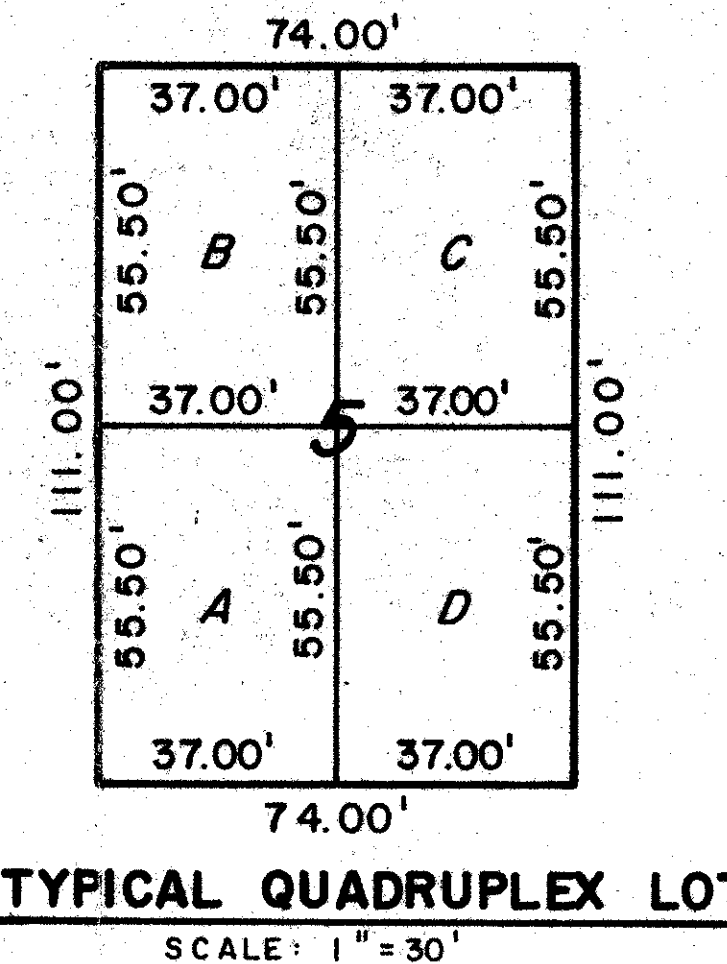
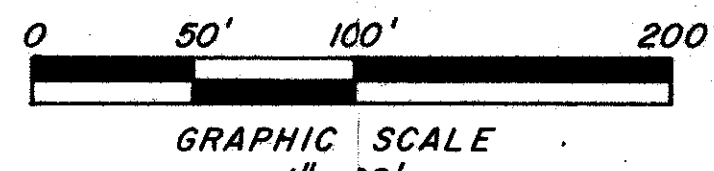


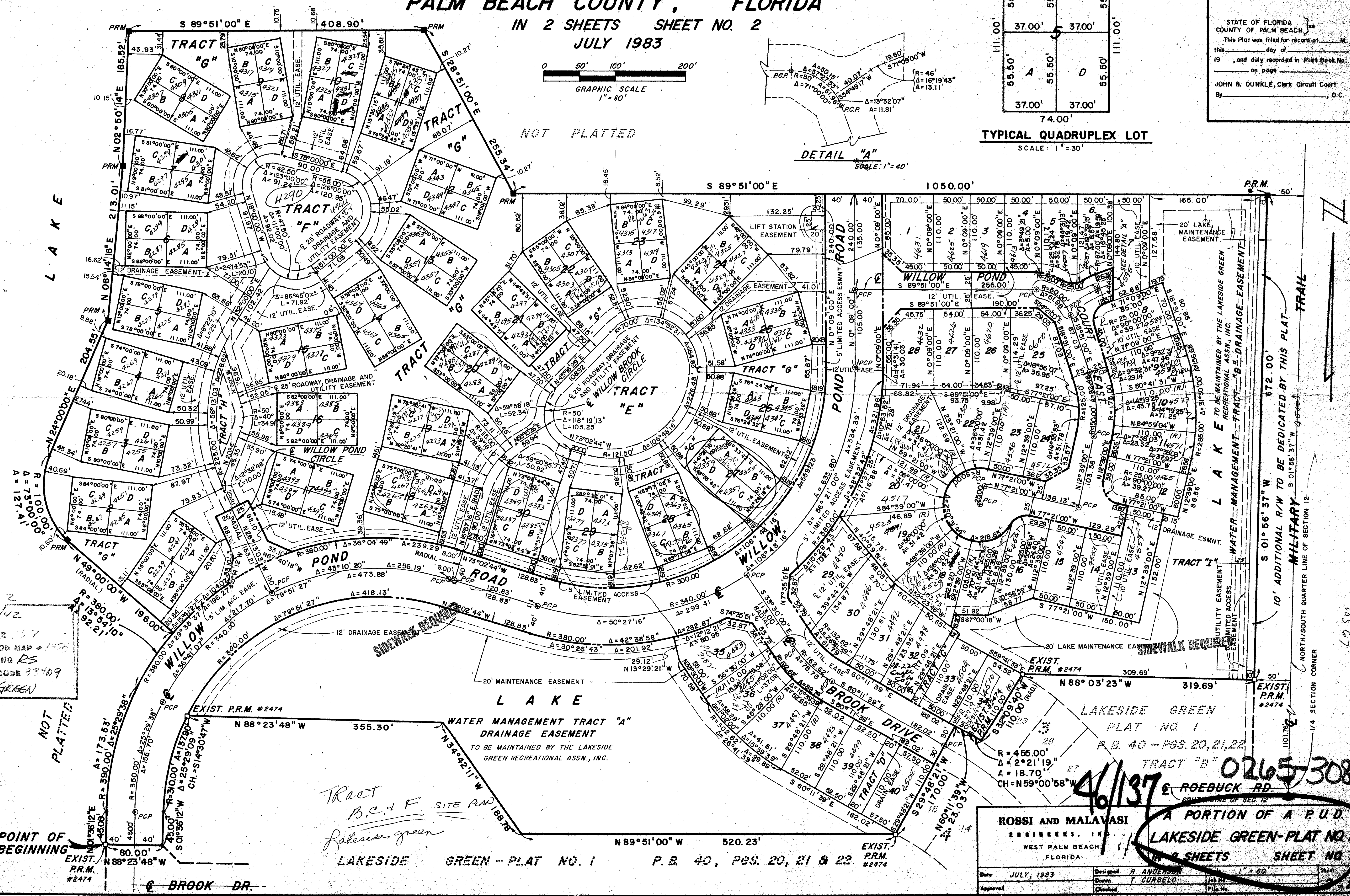
A PORTION OF A P.U.D.
LAKESIDE GREEN-PLAT NO. 2
 SECTION 12, TOWNSHIP 43 SOUTH, RANGE 42 EAST
 PALM BEACH COUNTY, FLORIDA

IN 2 SHEETS SHEET NO. 2
 JULY 1983



137

STATE OF FLORIDA
 COUNTY OF PALM BEACH
 This Plat was filed for record at _____
 this _____ day of _____
 19____, and duly recorded in Plat Book No. _____
 on page _____
 JOHN B. DUNKLE, Clerk Circuit Court
 By _____, D.C.



Subdivision 12/43/42
 BOOK 46 PAGE 157
 FLOOD ZONE B FLOOD MAP # 1456
 QUAD # 30 ZONING RS
 BE PUD ZIP CODE 33489
 PUD NAME LAKESIDE GREEN
 Map # 2

NOT PLATTED

Tract B, C & F
 Lakeside Green

ROSSI AND MALAVASI ENGINEERS, INC.
 WEST PALM BEACH, FLORIDA

DATE: JULY, 1983
 DESIGNED: R. ANDERSON
 DRAWN: T. CURBELO
 CHECKED: _____

1" = 60'

46/137 0265-308

A PORTION OF A P.U.D.
LAKESIDE GREEN-PLAT NO. 2
 IN 2 SHEETS SHEET NO. 2

TRAIL
 10' ADDITIONAL R/W TO BE DEDICATED BY THIS PLAT
 MILITARY
 NORTH/SOUTH QUARTER LINE OF SECTION 12
 1/4 SECTION CORNER

POINT OF BEGINNING
 EXIST. P.R.M. #2474
 N 88° 23' 48" W 80.00'

WATER MANAGEMENT TRACT "A" DRAINAGE EASEMENT
 TO BE MAINTAINED BY THE LAKESIDE GREEN RECREATIONAL ASSN., INC.

LAKESIDE GREEN - PLAT NO. 1 P.B. 40, PGS. 20, 21 & 22