

DRAWING NUMBER
46/141

DRAWING NUMBER

DRAWING NUMBER

DRAWING NUMBER

P.U.D.

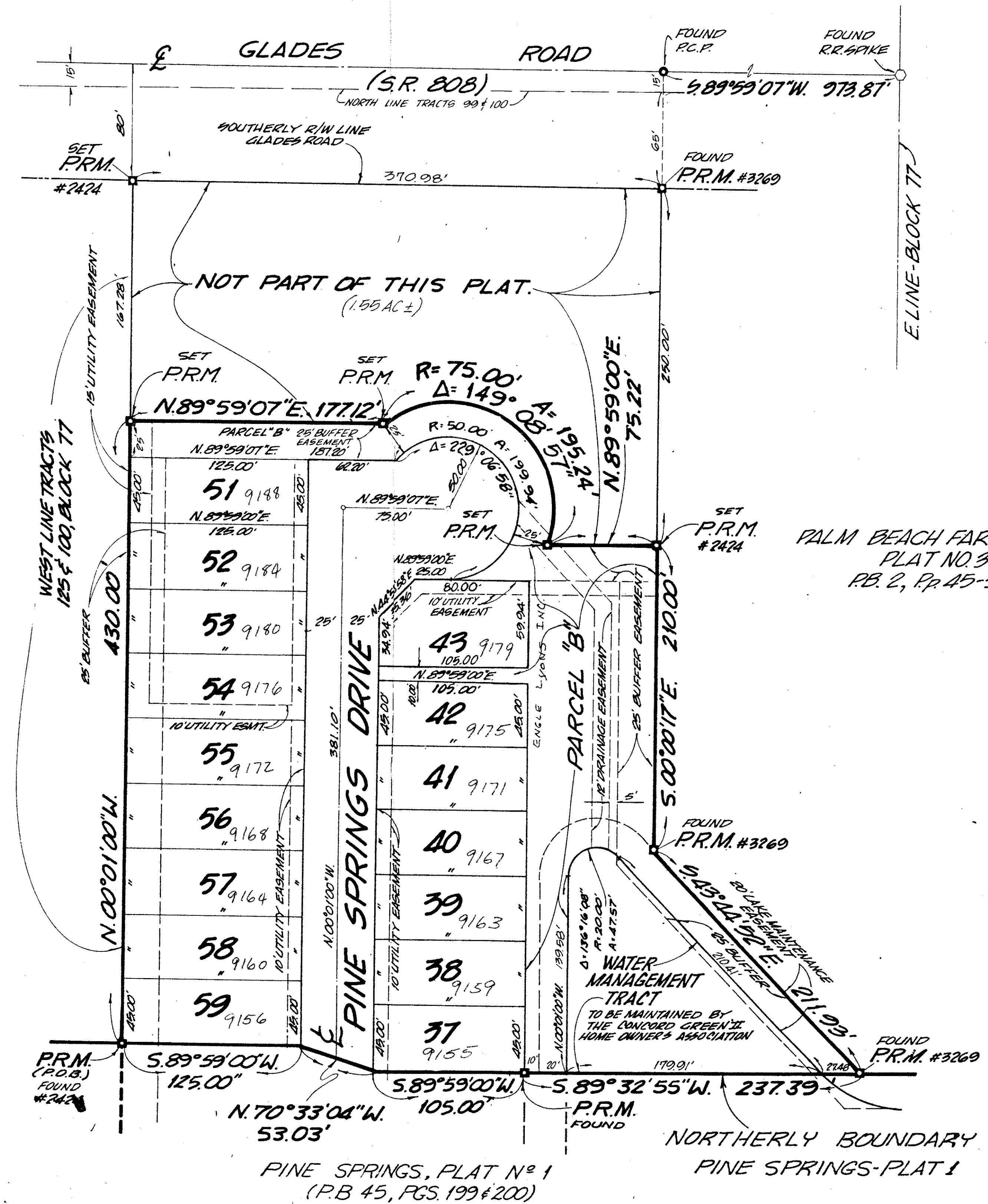
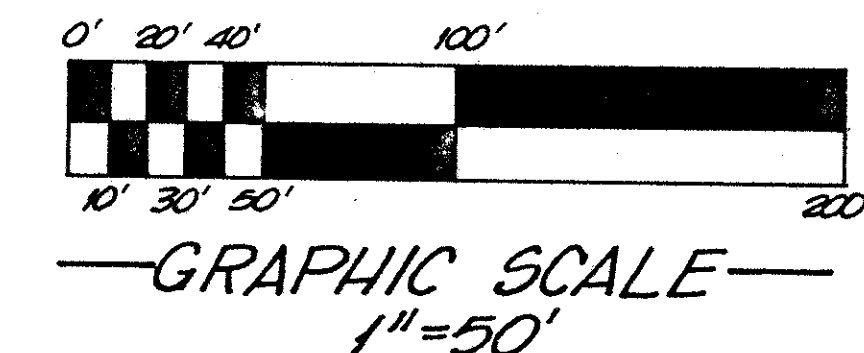
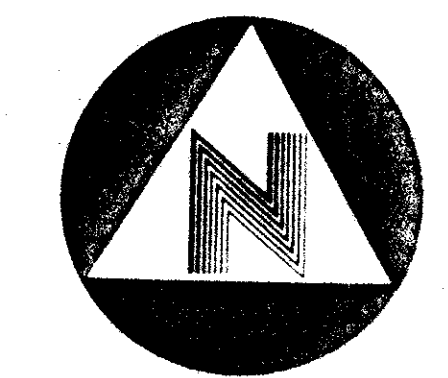
PINE SPRINGS

PLAT No 2

A RESUBDIVISION OF A PORTION OF BLOCK 77,
PALM BEACH FARMS COMPANY, PLAT NO. 3, (P.B. 2, Pp. 45-54)
IN SECTIONS 18 & 19, TOWNSHIP 47 SOUTH, RANGE 42 EAST,
PALM BEACH COUNTY, FLORIDA
SHEET 2 of 2 — AUGUST, 1983

STATE OF FLORIDA
COUNTY OF PALM BEACH
THIS PLAT WAS FILED FOR
RECORD AT _____ DAY OF
_____, AD, 1983 AND
DULY RECORDED IN PLAT BOOK
____ ON PAGES ____ AND

JOHN B. DUNKLE, CLERK
CIRCUIT COURT
BY: _____ DC



PALM BEACH FARMS CO.
PLAT NO. 3
(P.B. 2, Pp. 45-54)

PALM BEACH FARMS CO.
PLAT NO. 3
P.B. 2, Pp. 45-54

PINE SPRINGS, PLAT No 1
(P.B. 45, PGS. 199 & 200)

*Plat 78-221(P)
#300.00 Multi-family
#300.00 S.F.D.*

TURNOUT REQUIRED

0297-300

SUBDIVISION # 1814742
BLOCK # 77 PART # 1
PLOT NO. 401 PLAT NO. 2 P.B. 2
C.I.V.D. # 53
P.D. NAME IN 086199834

46/141 PINE SPRINGS
BENCH MARK
land surveying and mapping, inc.
WEST PALM BEACH, FLORIDA