

DRAWING NUMBER
46/155

DRAWING NUMBER

DRAWING NUMBER

DRAWING NUMBER

PARCEL 25
TOWN COLONY OF VIA VERDE P. U. D.
IN PART OF SECTION 22, TOWNSHIP 47 SOUTH, RANGE 42 EAST
PALM BEACH COUNTY, FLORIDA
IN 2 SHEETS SHEET NO. 2

GEE & JENSON
ENGINEERS - ARCHITECTS - PLANNERS, INC.
WEST PALM BEACH, FLORIDA
JUNE 1988
SCALE IN FEET Scale: 1" = 50'

155

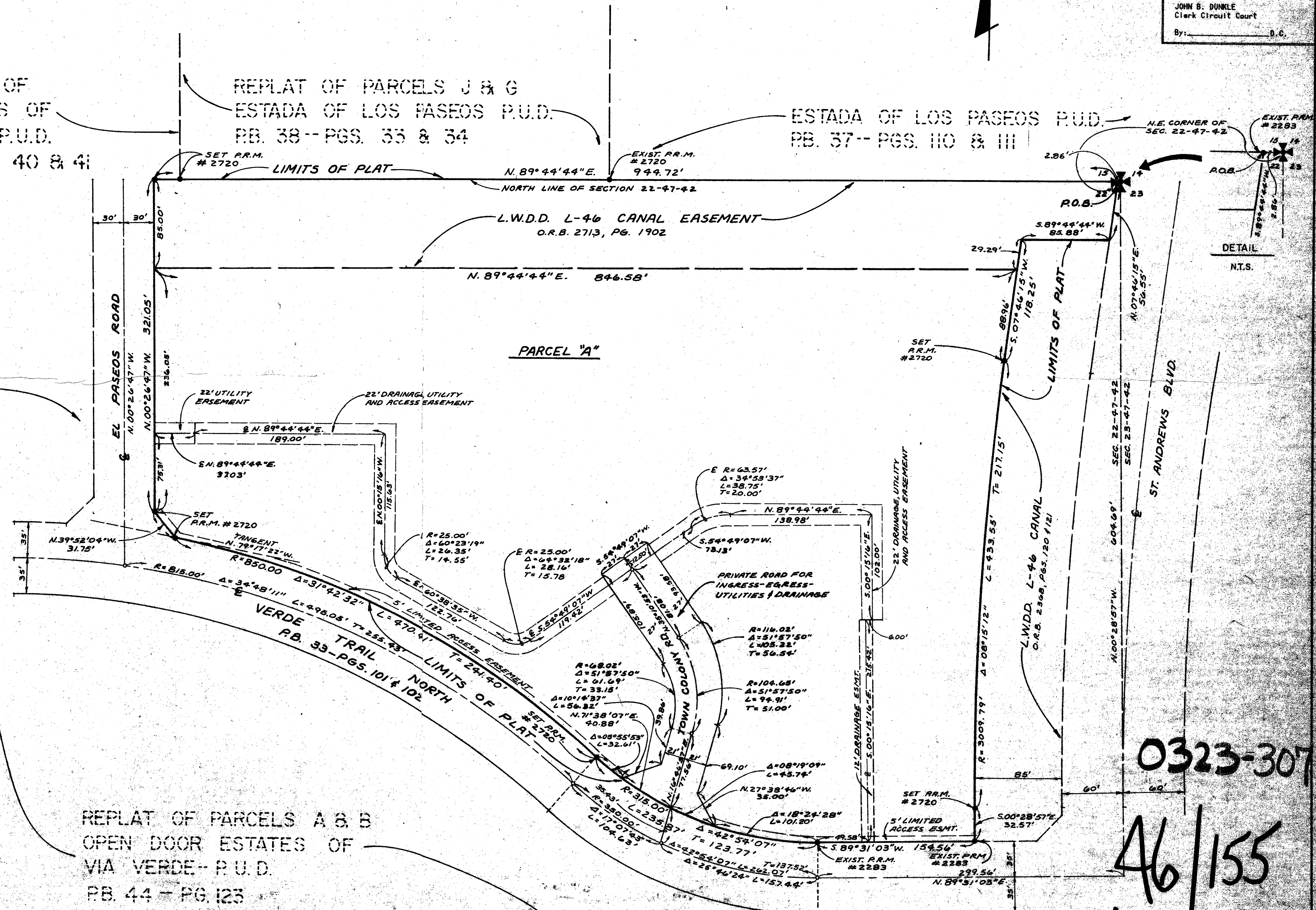
STATE OF FLORIDA
COUNTY OF PALM BEACH
This plat was filed for
record at _____ M. this _____ day
of _____ 1988, and duly
recorded in Plot Book No. _____
on Page _____
JOHN B. DUNKLE
Clerk Circuit Court
By: _____ D.C.

REPLAT OF
LOS PASEOS OF
VIA VERDE P.U.D.
PB. 32 PGS. 40 & 41

REPLAT OF PARCELS J & G
ESTADA OF LOS PASEOS P.U.D.
PB. 38-- PGS. 33 & 34

ESTADA OF LOS PASEOS P.U.D.
PB. 37-- PGS. III & III

UNPLATTED



REPLAT OF PARCELS A & B
OPEN DOOR ESTATES OF
VIA VERDE-- P.U.D.
PB. 44 - PG. 123

0323-307

46/155

TOWN COLONY OF VIA VERDE