

46/165

CURVE DATA (cont'd)

CURVE	ARC	RADIUS	CENTRAL ANGLE
C-91	31.32'	181.50'	9°53'17"
C-92	11.46'	181.50'	3°37'04"
C-93	38.43'	181.50'	12°02'56"
C-94	16.78'	120.00'	8°00'48"
C-95	25.01'	120.00'	11°56'21"
C-96	21.96'	75.00'	16°47'22"
C-97	38.24'	75.00'	29°12'41"
C-98	0.74'	75.00'	0°33'57"
C-99	50.24'	60.00'	47°58'34"
C-100	37.52'	50.00'	43°00'00"
C-101	23.93'	50.00'	27°25'39"
C-102	18.38'	50.00'	21°03'23"
C-103	28.61'	50.00'	32°47'00"
C-104	7.62'	50.00'	8°43'58"
C-105	60.05'	90.00'	38°13'55"
C-106	51.32'	90.00'	51°46'05"
C-107	18.33'	50.00'	21°00'00"

# PARKWALK - PLAT NO. 2

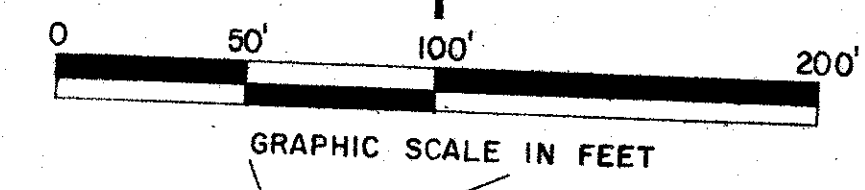
## BEING THE SEVENTH PLAT OF LE CHALET (P.U.D.)

### SECTIONS 14 & 15, TOWNSHIP 45 SOUTH, RANGE 42 EAST

#### PALM BEACH COUNTY, FLORIDA

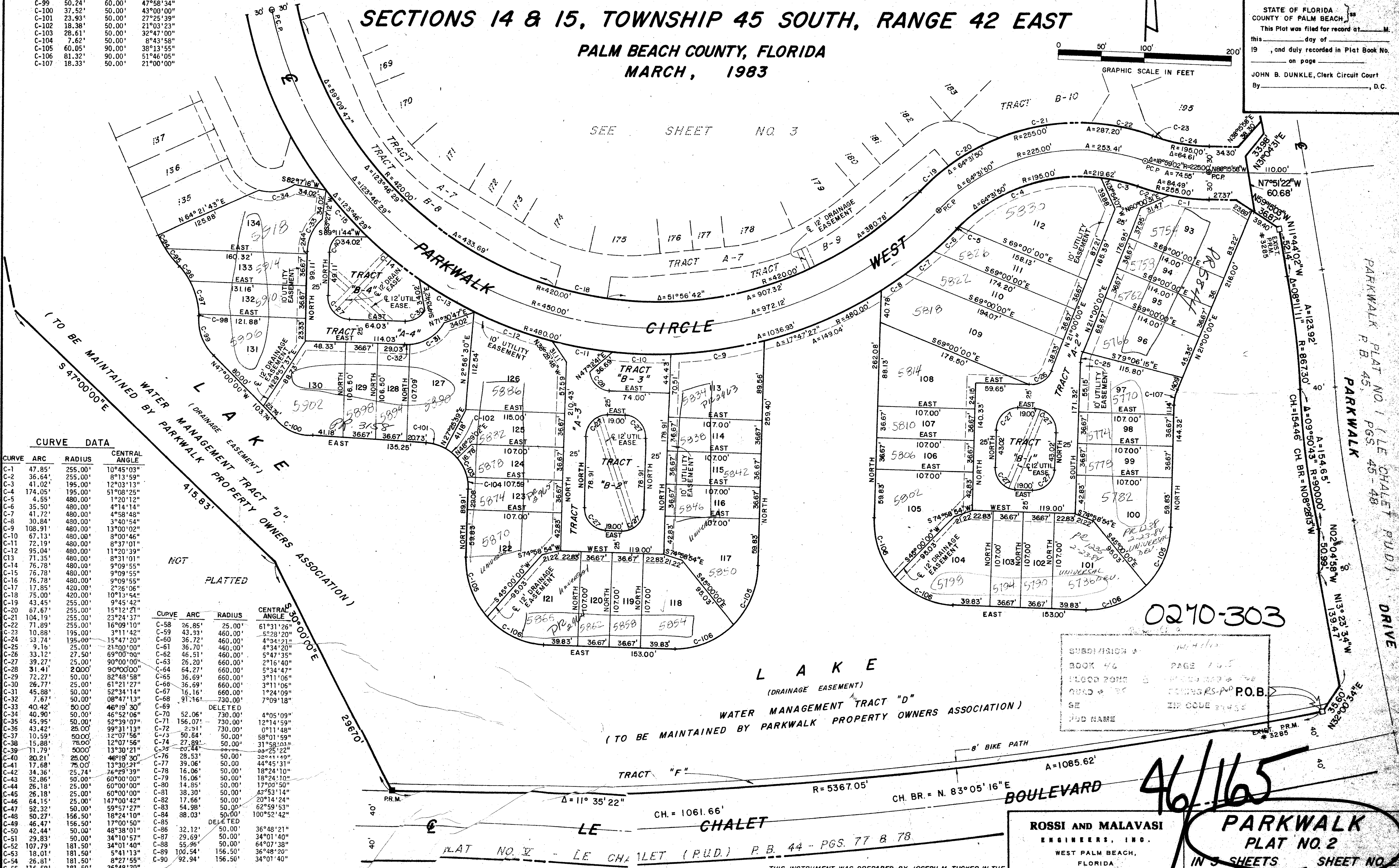
MARCH, 1983

STATE OF FLORIDA  
 COUNTY OF PALM BEACH  
 This Plat was filed for record at \_\_\_\_\_ M.  
 this \_\_\_\_\_ day of \_\_\_\_\_  
 19 \_\_\_\_\_, and duly recorded in Plat Book No. \_\_\_\_\_  
 on page \_\_\_\_\_  
 JOHN B. DUNKLE, Clerk Circuit Court  
 By \_\_\_\_\_, D.C.



DRAWING NUMBER:

SEE SHEET NO. 3



CURVE DATA

CURVE	ARC	RADIUS	CENTRAL ANGLE
C-1	47.85'	255.00'	10°45'03"
C-2	36.64'	255.00'	8°13'59"
C-3	41.02'	195.00'	12°03'13"
C-4	174.05'	195.00'	51°08'25"
C-5	4.55'	480.00'	1°20'12"
C-6	35.50'	480.00'	4°14'14"
C-7	41.72'	480.00'	4°58'48"
C-8	30.84'	480.00'	3°40'54"
C-9	108.91'	480.00'	13°00'02"
C-10	67.13'	480.00'	8°00'46"
C-11	72.19'	480.00'	8°37'01"
C-12	95.04'	480.00'	11°20'39"
C-13	71.35'	480.00'	8°31'01"
C-14	76.78'	480.00'	9°09'55"
C-15	76.78'	480.00'	9°09'55"
C-16	76.78'	480.00'	9°09'55"
C-17	17.85'	420.00'	2°26'06"
C-18	75.00'	420.00'	10°13'54"
C-19	43.45'	255.00'	9°45'42"
C-20	67.67'	255.00'	15°12'27"
C-21	104.19'	255.00'	23°24'37"
C-22	71.89'	255.00'	16°09'10"
C-23	10.88'	195.00'	3°11'42"
C-24	53.74'	195.00'	15°47'20"
C-25	9.16'	25.00'	21°00'00"
C-26	33.12'	27.50'	69°00'00"
C-27	39.27'	25.00'	90°00'00"
C-28	31.41'	2.000'	90°00'00"
C-29	72.27'	50.00'	82°48'58"
C-30	26.77'	25.00'	61°21'27"
C-31	45.88'	50.00'	52°34'14"
C-32	7.67'	50.00'	08°47'13"
C-33	40.42'	50.00'	48°19'30"
C-34	40.90'	50.00'	46°52'06"
C-35	45.95'	50.00'	52°39'07"
C-36	43.42'	25.00'	99°31'13"
C-37	10.59'	50.00'	12°07'56"
C-38	15.88'	75.00'	12°07'56"
C-39	11.79'	50.00'	13°30'21"
C-40	20.21'	25.00'	46°19'30"
C-41	17.68'	75.00'	13°30'21"
C-42	34.36'	25.74'	76°29'39"
C-43	52.86'	50.00'	60°00'00"
C-44	26.18'	25.00'	60°00'00"
C-45	26.18'	25.00'	60°00'00"
C-46	64.15'	25.00'	147°00'42"
C-47	52.32'	50.00'	59°57'27"
C-48	50.27'	156.50'	18°24'10"
C-49	46.47'	156.50'	17°00'50"
C-50	42.44'	50.00'	48°38'01"
C-51	29.83'	50.00'	34°10'57"
C-52	107.79'	181.50'	34°01'40"
C-53	18.01'	181.50'	5°41'13"
C-54	26.81'	181.50'	8°27'55"
C-55	116.59'	181.50'	36°48'20"
C-56	18.65'	50.00'	21°22'30"
C-57	42.37'	25.00'	97°06'05"

CURVE	ARC	RADIUS	CENTRAL ANGLE
C-58	26.85'	25.00'	61°31'26"
C-59	43.33'	460.00'	5°28'20"
C-60	36.72'	460.00'	4°34'21"
C-61	36.70'	460.00'	4°34'20"
C-62	46.51'	460.00'	5°47'35"
C-63	26.20'	660.00'	2°16'40"
C-64	64.27'	660.00'	5°34'47"
C-65	36.69'	660.00'	3°11'06"
C-66	36.69'	660.00'	3°11'06"
C-67	16.16'	660.00'	1°24'09"
C-68	31.16'	730.00'	7°09'18"
C-69	DELETED		
C-70	52.06'	730.00'	4°05'09"
C-71	156.07'	730.00'	12°14'59"
C-72	2.51'	730.00'	0°11'48"
C-73	50.64'	50.00'	58°01'59"
C-74	27.89'	50.00'	31°58'03"
C-75	20.44'	50.00'	28°25'22"
C-76	28.53'	50.00'	32°41'49"
C-77	39.06'	50.00'	44°45'31"
C-78	16.06'	50.00'	18°24'10"
C-79	16.06'	50.00'	18°24'10"
C-80	14.85'	50.00'	17°00'50"
C-81	38.30'	50.00'	45°53'14"
C-82	17.66'	50.00'	20°14'24"
C-83	54.98'	50.00'	62°59'53"
C-84	88.03'	50.00'	100°52'42"
C-85	DELETED		
C-86	32.12'	50.00'	36°48'21"
C-87	29.69'	50.00'	34°01'40"
C-88	55.96'	50.00'	64°07'38"
C-89	100.54'	156.50'	36°48'20"
C-90	92.94'	156.50'	34°01'40"

SUBDIVISION # 144-113  
 BOOK 46 PAGE 145  
 RECORD # 2-23-84  
 GE ENGINEERS-P.O.B.  
 PUD NAME ZIP CODE 33452

46/165

**ROSSI AND MALAVASI ENGINEERS, INC.**  
 WEST PALM BEACH, FLORIDA

**PARKWALK PLAT NO. 2**  
 IN 3 SHEETS SHEET NO. \_\_\_\_\_

THIS INSTRUMENT WAS PREPARED BY JOSEPH M. TUCKER IN THE OFFICES OF ROSSI AND MALAVASI ENGINEERS, INC. 1675 PALM BEACH LAKES BOULEVARD, WEST PALM BEACH, FLORIDA 33401 TELEPHONE: 737-6546

Date	MARCH, 1983	Designed	ANDERSON	Scale	1" = 50'	Sheet	2 of 3
Drawn	C. GOSS	Checked		Job No.	4215-83		
Approved		Checked		File No.	S-1286-00		